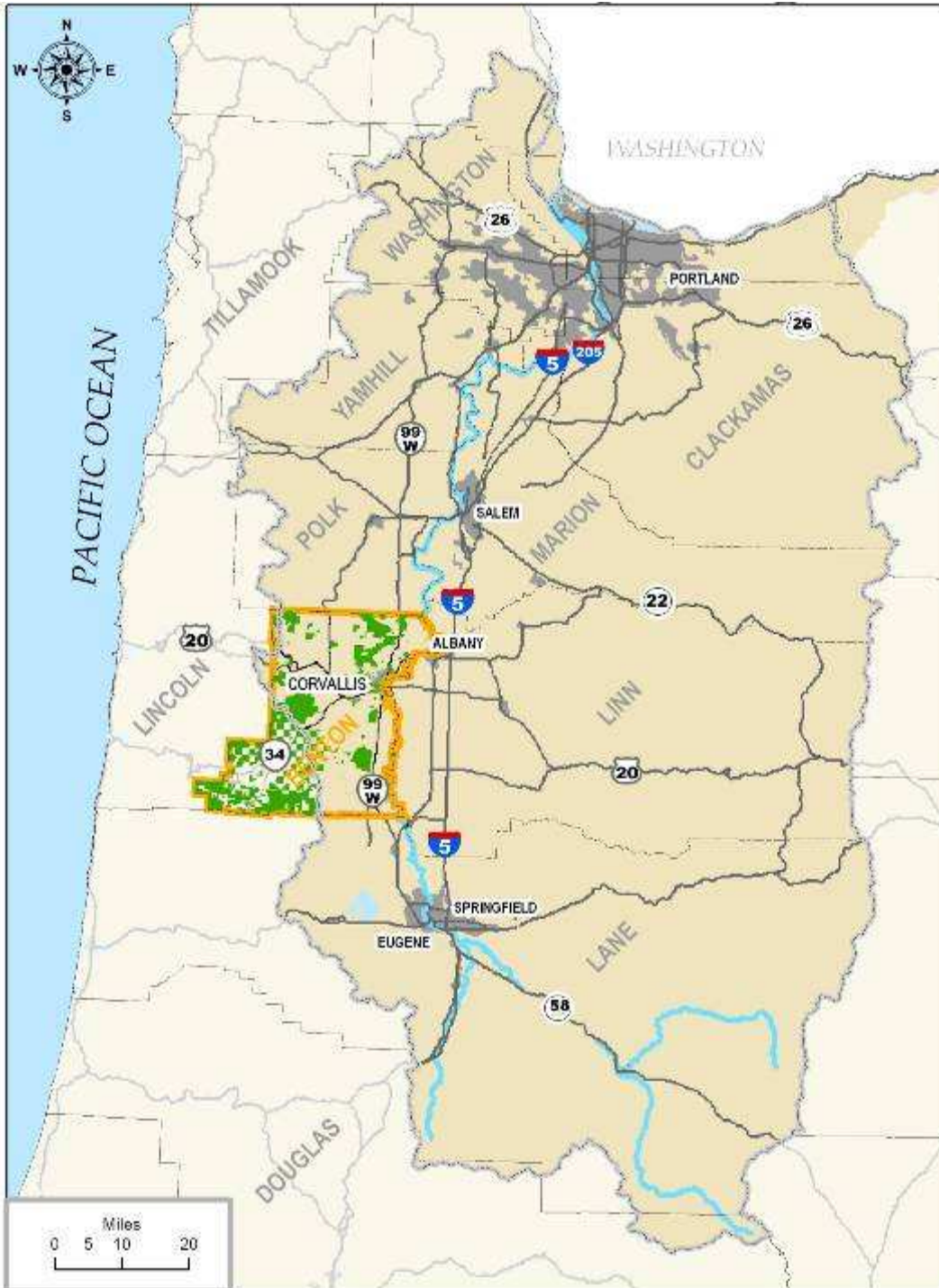


# ***A Habitat Conservation Plan for Benton County***

- Significant rare species and habitats
- Substantial public lands
- Opportunities for community outreach
- Strong base of collaborative professionals and public agencies
- Recovery planning in progress

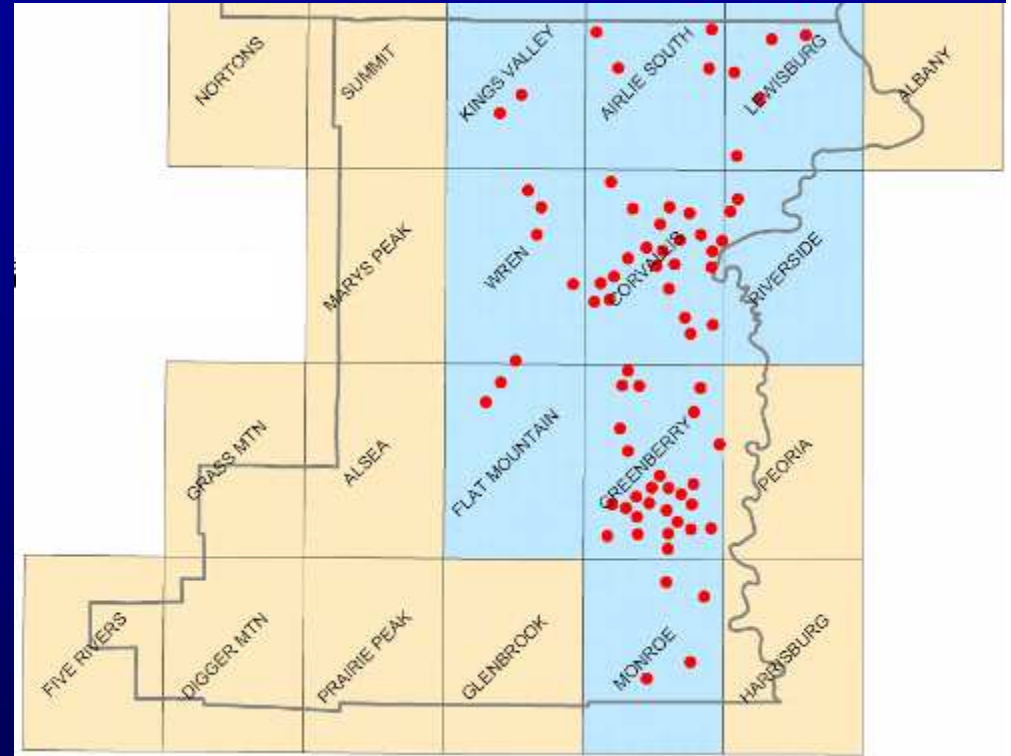
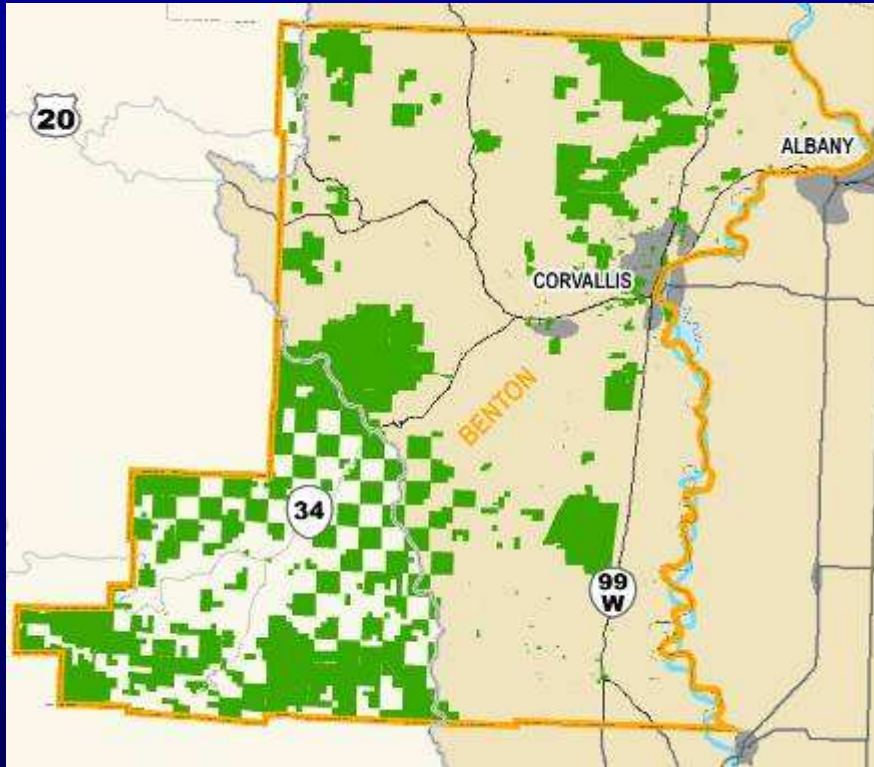




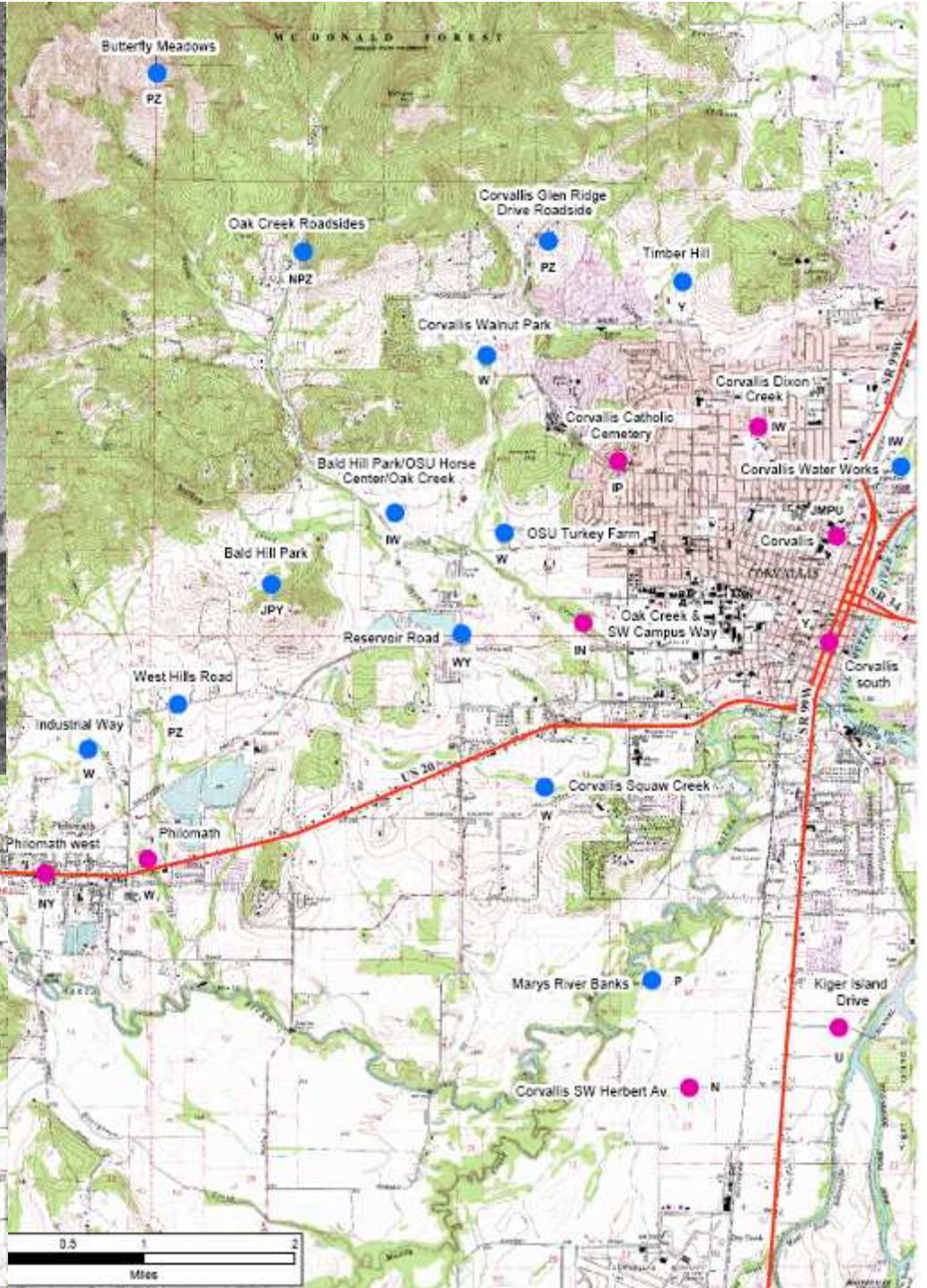
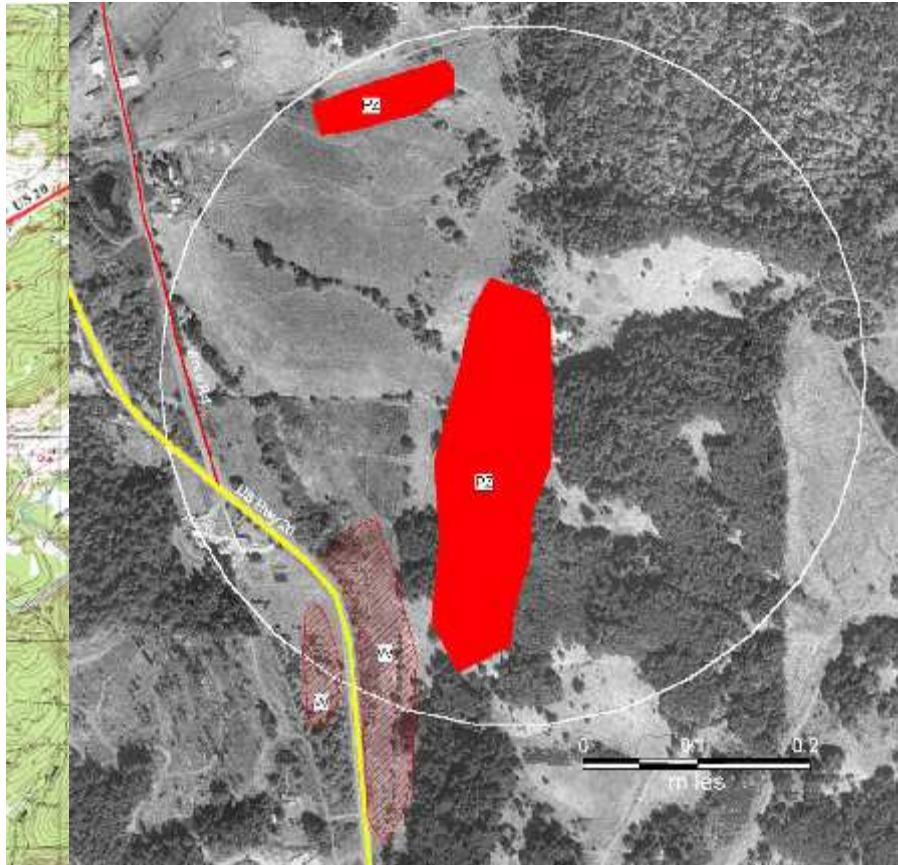
## Benton County:

- 7% of the Willamette Valley Ecoregion
- 12% of the remaining prairie and oak savanna
- 15-20% of Fender's blue populations
- All remaining Taylor's checkerspot populations

# Benton County









# *Habitats*









# *Species*

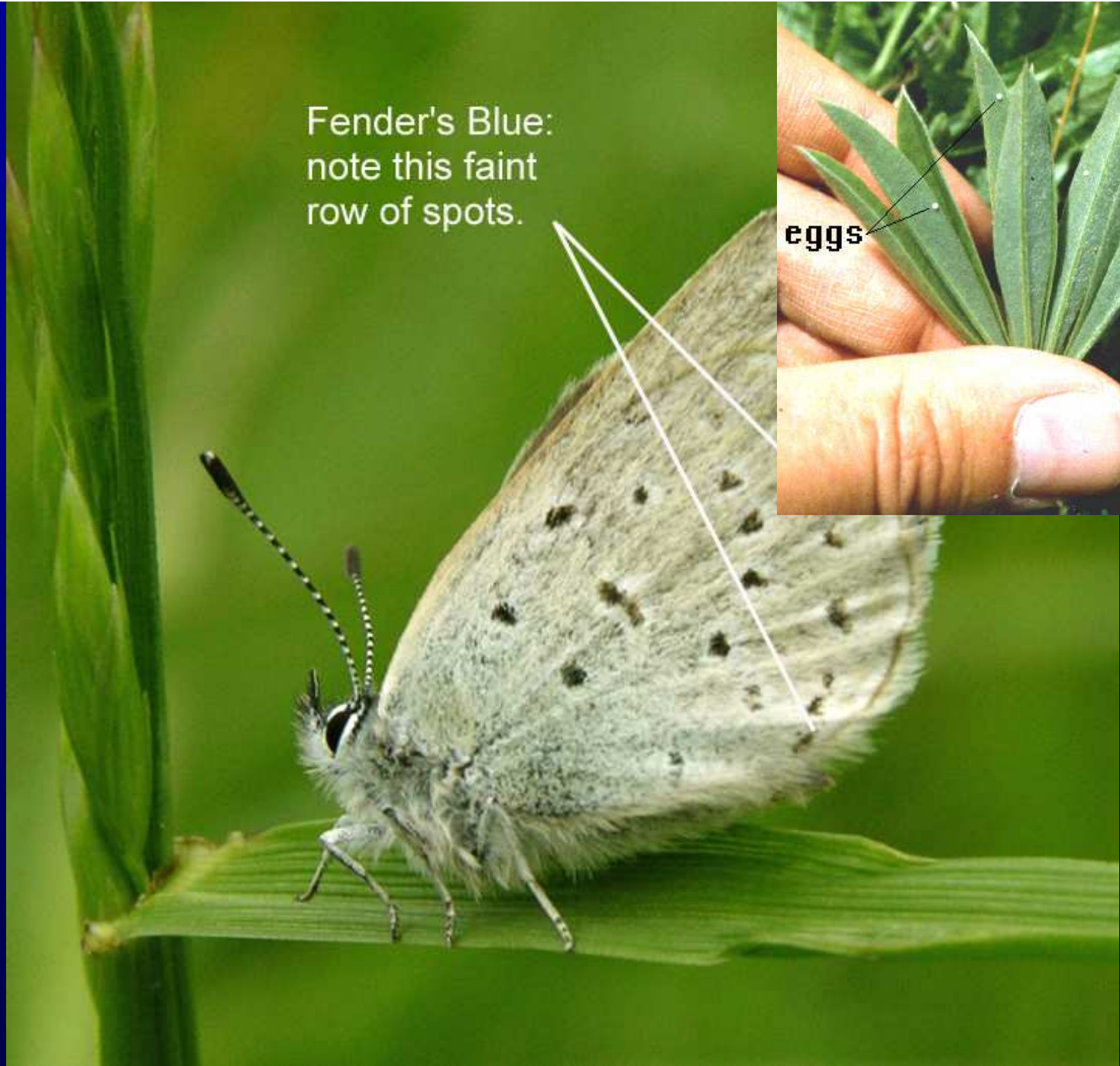


Taylor's checkerspot



Fender's Blue:  
note this faint  
row of spots.

eggs



*Photo credit: Bruce Newhouse*





White breasted nuthatch

Streaked horned lark







Kincaid's lupine



Willamette daisy





Nelson's checkermallow



Golden paintbrush





Bradshaw's desert-parsley



# *Approach*

- Ecosystem approach
- Emphasis on positive process for land owners and rare species/habitats
- Develop a model process



# *Approach*

- **Community building:**
  - Public meetings, scoping, objectives
  - Stakeholders and Technical Advisory Groups
  - School and community group participation
- **Site assessments**
  - Initially in the Wren area
  - Private lands where owners are willing
  - Public lands
  - Public involvement
- **Staff partnership with:**
  - Institute for Applied Ecology
  - Parametrix
  - Benton County



*Private Lands Program*



- Habitat Conservation Plan
- National Environmental Protection Act (NEPA) documents
- Environmental Assessment (or EIS)





