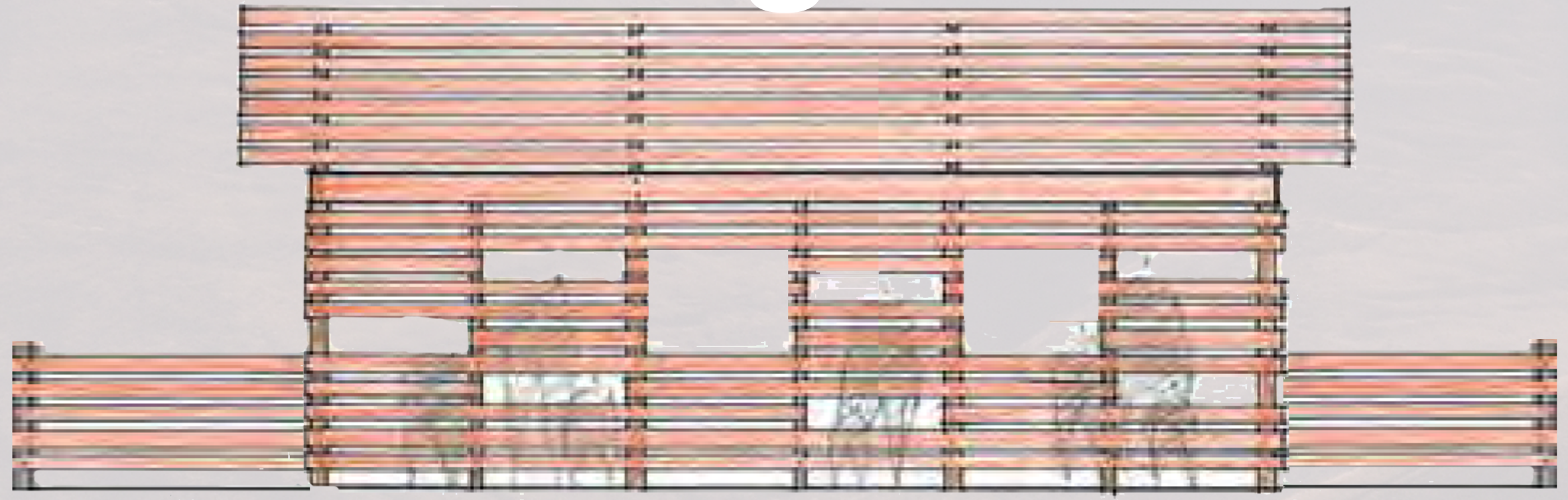
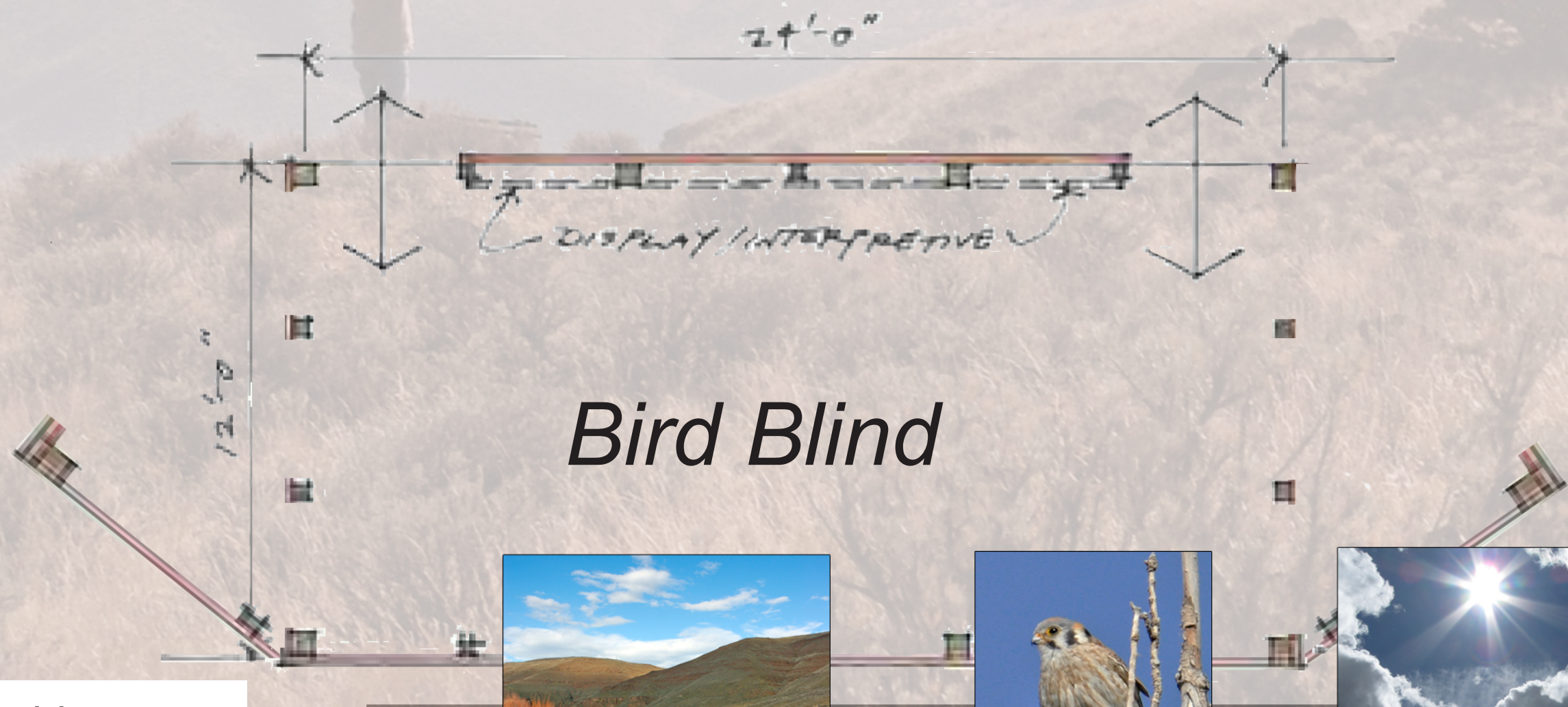


Connecting with Nature



Drawings by Hennebery Eddy Architects



Bird Blind



Signs of wildlife around the diverse habitats within the riparian corridor. Birds in particular are readily heard and observed by the visitor. The bird blind allows visitors to discreetly watch birds perform their daily rituals.

Reading the Landscape



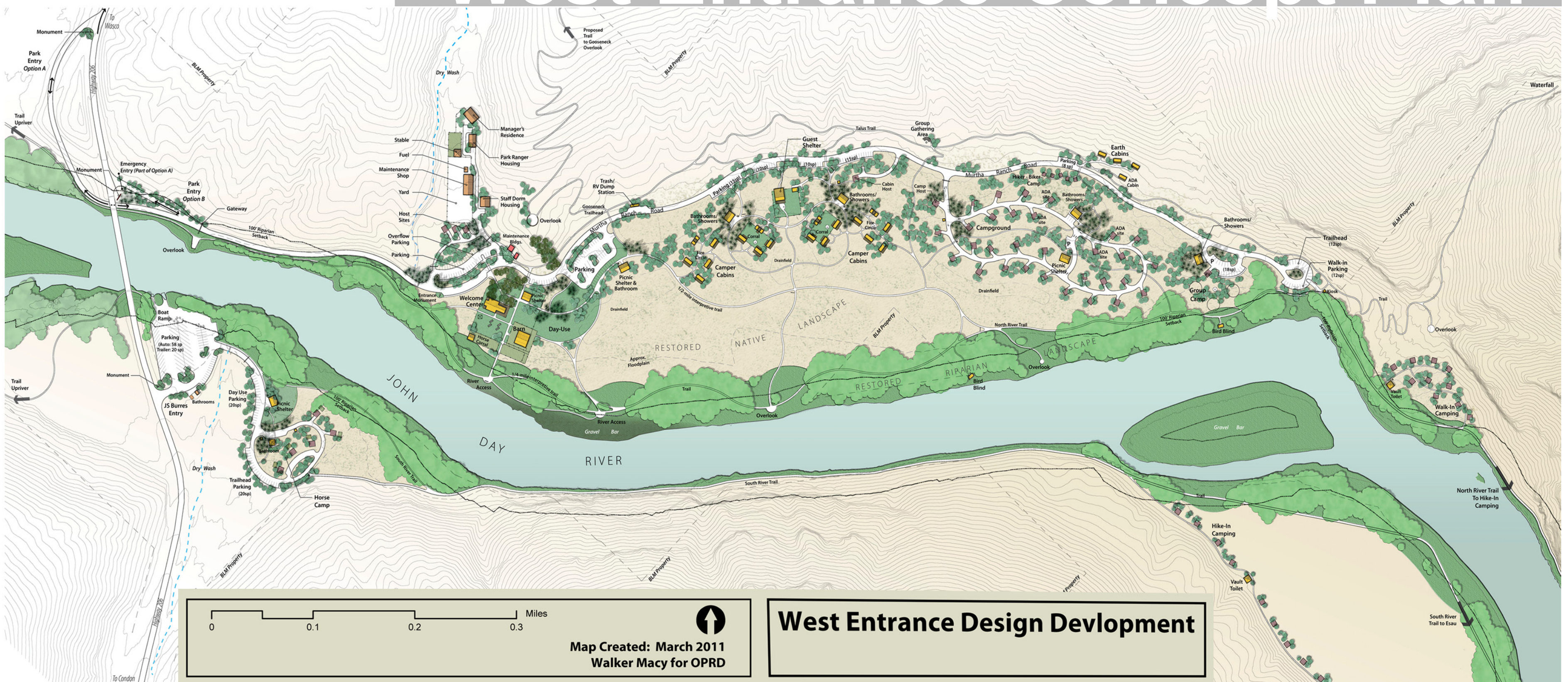
Cultural history from prehistoric times to the present wait to be discovered and interpreted. Engaging stories about the Indigenous tribes, River Ecology, Geology, Ranching and future Native Plant Restoration projects, enhance the visitors understanding and experience of Cottonwood Canyon.

Adapted from Graham Oaks Nature Park in Wilsonville



COTTONWOOD CANYON

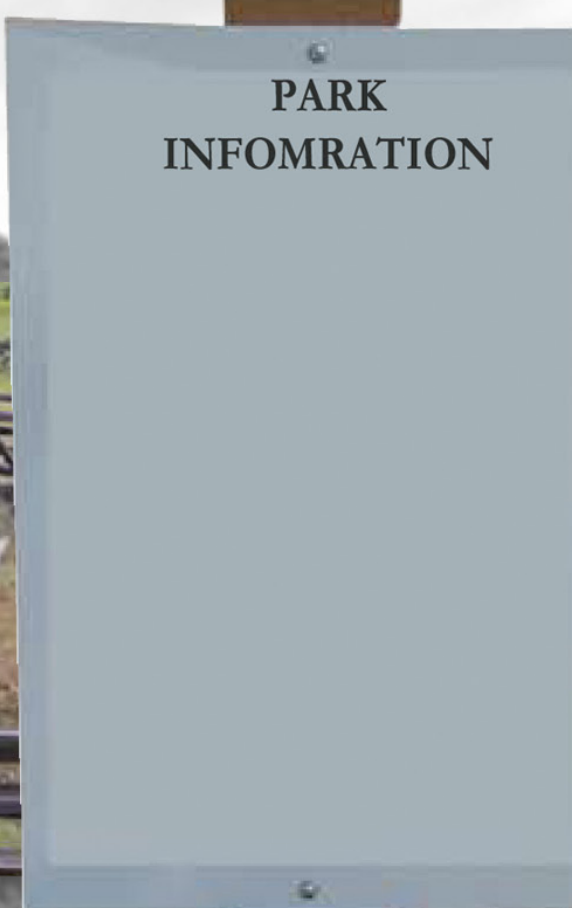
West Entrance Concept Plan



The concept plan illustrates the development of the West Entrance including an education center, overnight accommodations, trails, and maintenance facilities. This plan restores historic features and optimizes the scenic and recreational resources along the John Day River. The park will be developed incrementally based on user demands.



Sense of Place

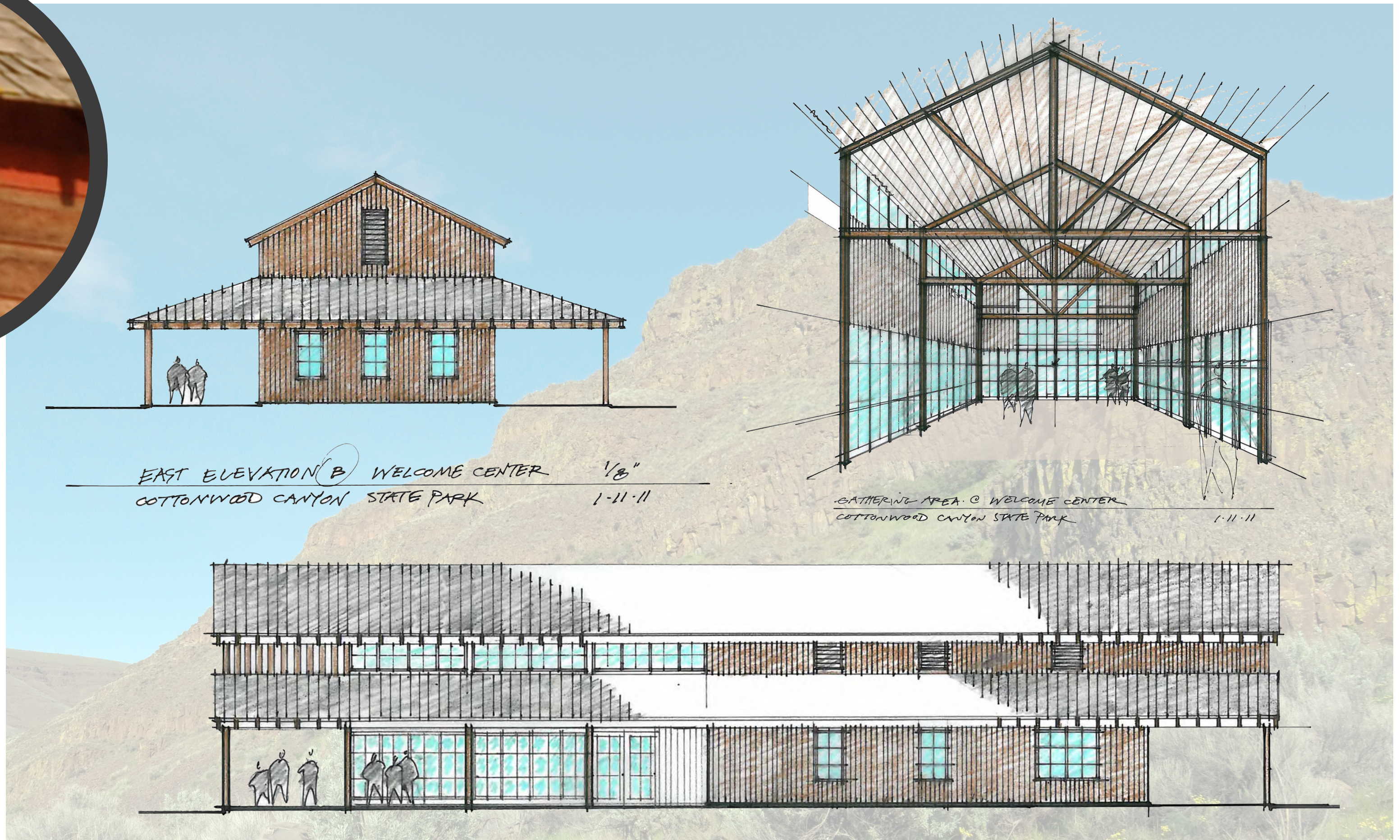


The rustic ranch-style wayfinding features are made with weathered steel and materials found on site such as stones. Upon entering the park, visitors catch a glimpse of the historic barn from a distance as they are directed to the welcome center, park facilities and recreational activities.



COTTONWOOD CANYON

Education Center



The future Education Center houses classrooms and provides school groups as well as the casual visitor with the historical context and the lay of the land before departing on their outdoor excursion at Cottonwood Canyon.

West Day Use Area



The Experiential Center is located at the heart of the West Day Use Area. The center includes the Barn, gathering areas, demonstration garden, corral and future education center. Visitors can get a sense of ranch life by participating in a variety of interactive ranch-themed activities.



COTTONWOOD CANYON