

# WATER FOR IRRIGATION STREAMS & ECONOMY

HISTORY OF IRRIGATION IN ROGUE VALLEY

March 2012

# Things were different back in the day

2

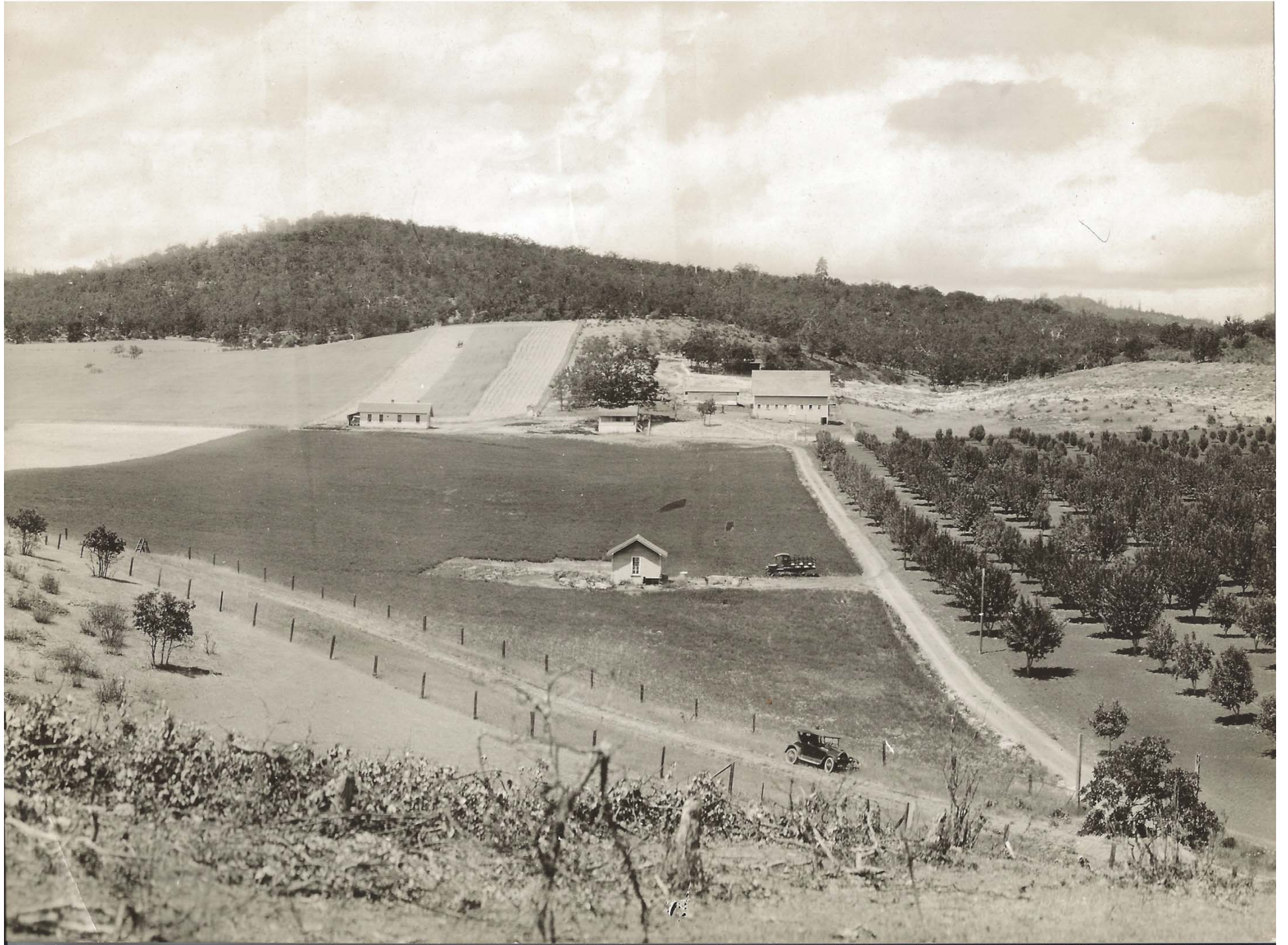
- Jackson County started with mining
- By 1880's agriculture was becoming important
  - Orchards and pasture were dominant
- Population was slightly less than now.

➤ 1860	3,736
➤ 1880	8,154
➤ 1920	20,405
➤ 1960	73,962
➤ 2010	203,206
- Jackson County growing faster than Oregon and US average.











# Dry land orchards

5





DRY-LAND PEACH ORCHARD (ABANDONED)



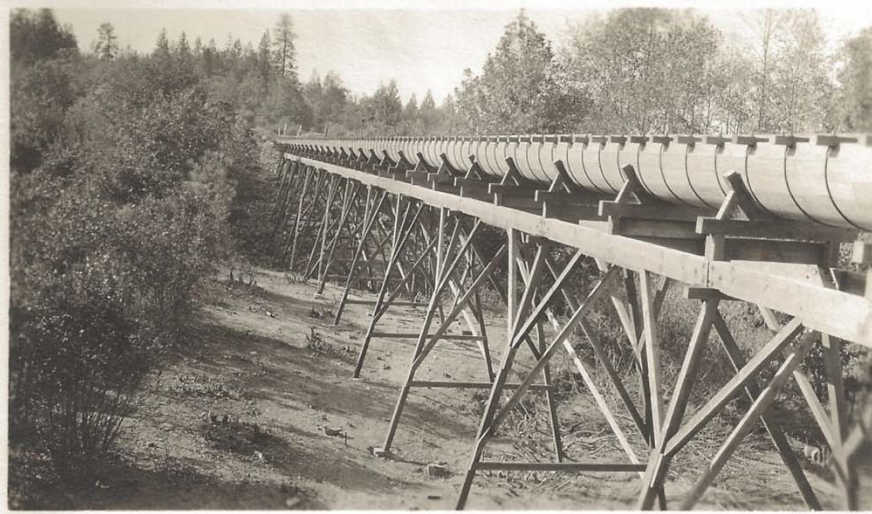
# Irrigation comes to Rogue Valley

7

- Irrigation companies start and fail in 1880's through 1920's.
  - Become much of what is now RRVID and MID.
- Reservoirs
  - Fourmile and Fishlake created in 1908
    - Improved in 1922
  - Emigrant created in 1924
  - Agate 1966



And



ensive





a reservoir is a



Emigrant Creek Dam  
Aug. 28-1924  
Talent Irrig Dist.



# But the results were impressive!

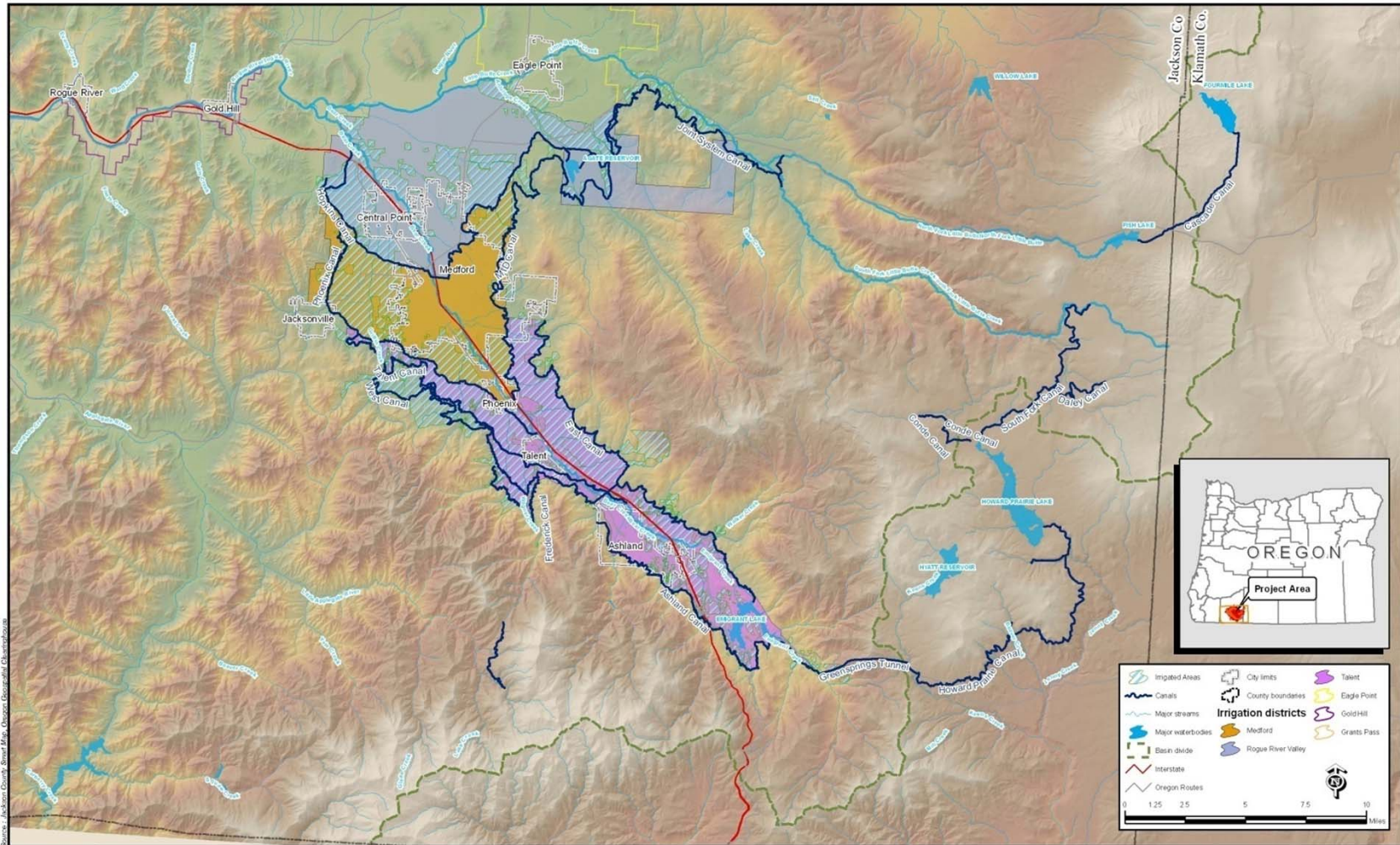
10



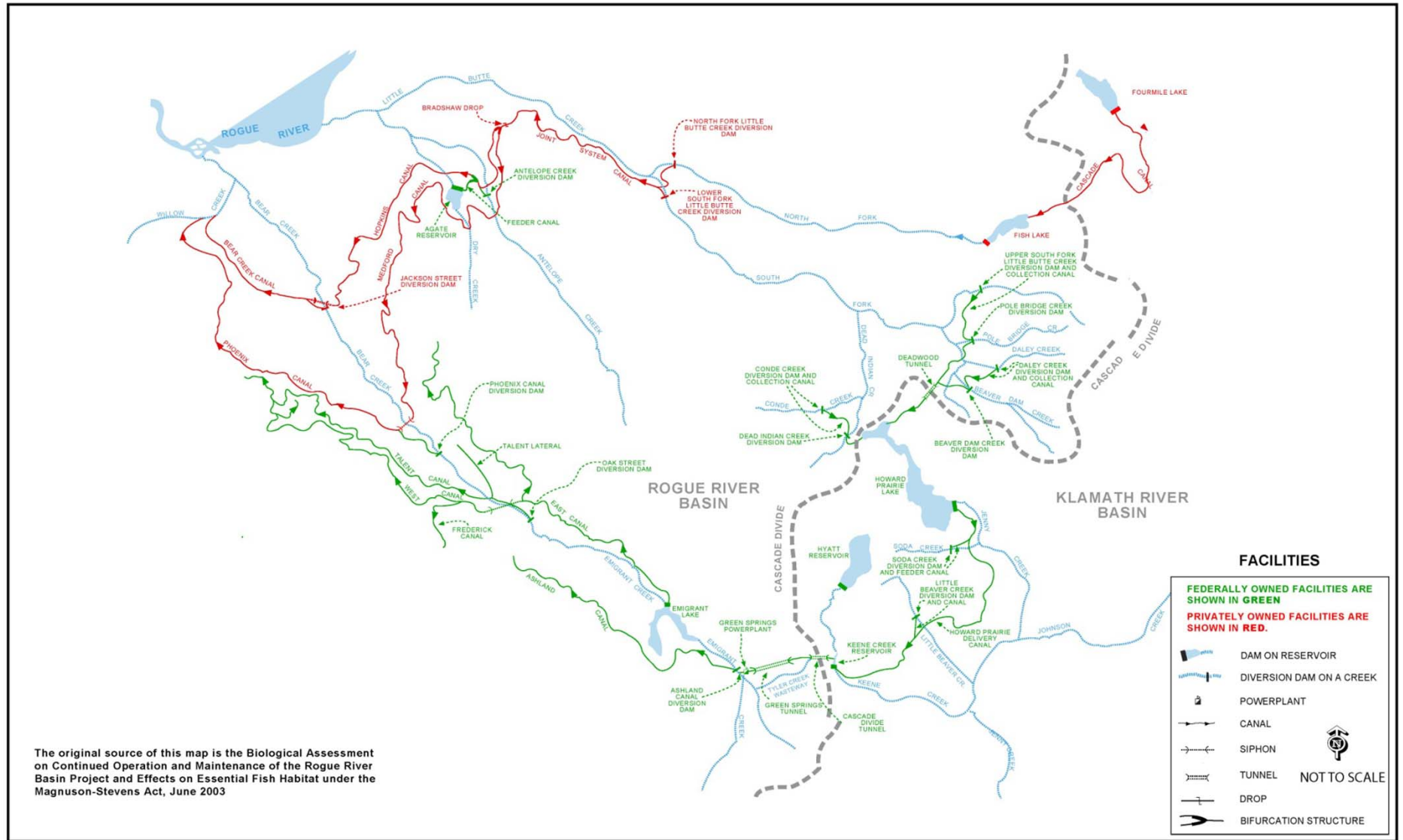


# But they built a complicated system

11



# And here is how it works!



**HDR** | ONE COMPANY  
*Many Solutions™*

FIGURE 5  
 Operations Schematic of the Rogue River Basin Project  
 WISE Preliminary Feasibility Study | City of Medford



# Questions?

13

