

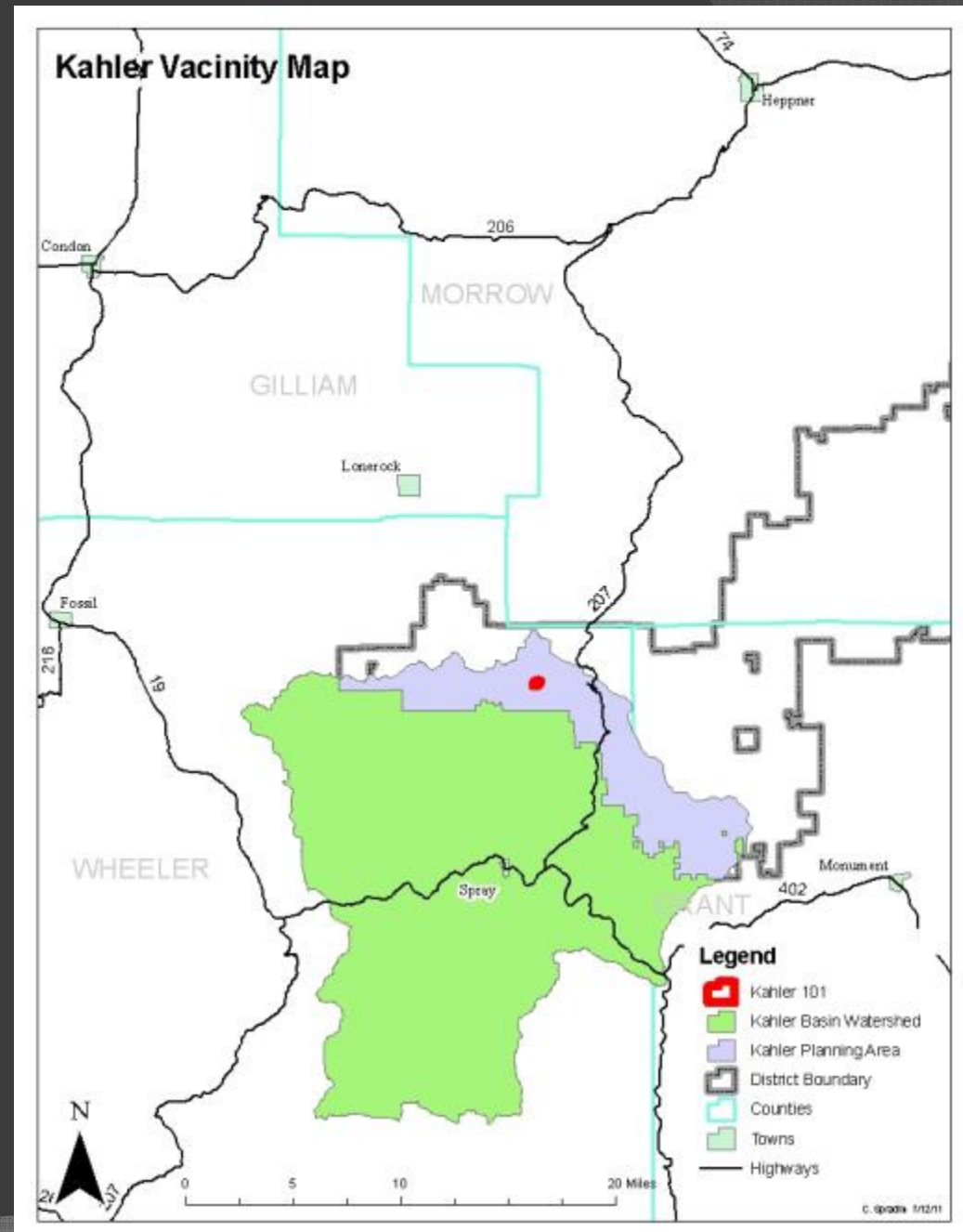
A photograph of a forest. In the foreground, a large tree trunk with thick, reddish-brown, peeling bark is visible on the left side. The background shows a grassy clearing with several other trees, including a prominent one in the center. The text "KAHLER PLANNING AREA" is overlaid in the center of the image.

KAHLER PLANNING AREA

**Heppner Ranger District
Umatilla National Forest
USDA Forest Service**

Introduction

- Lower John Day River-Kahler Creek Watershed
 - 16-20" precipitation annually
 - July to September drought
- Kahler Planning Area (32,871 acres)
 - Dry ponderosa pine and mixed-conifer forests
- History of harvest, fire and suppression, grazing, road construction



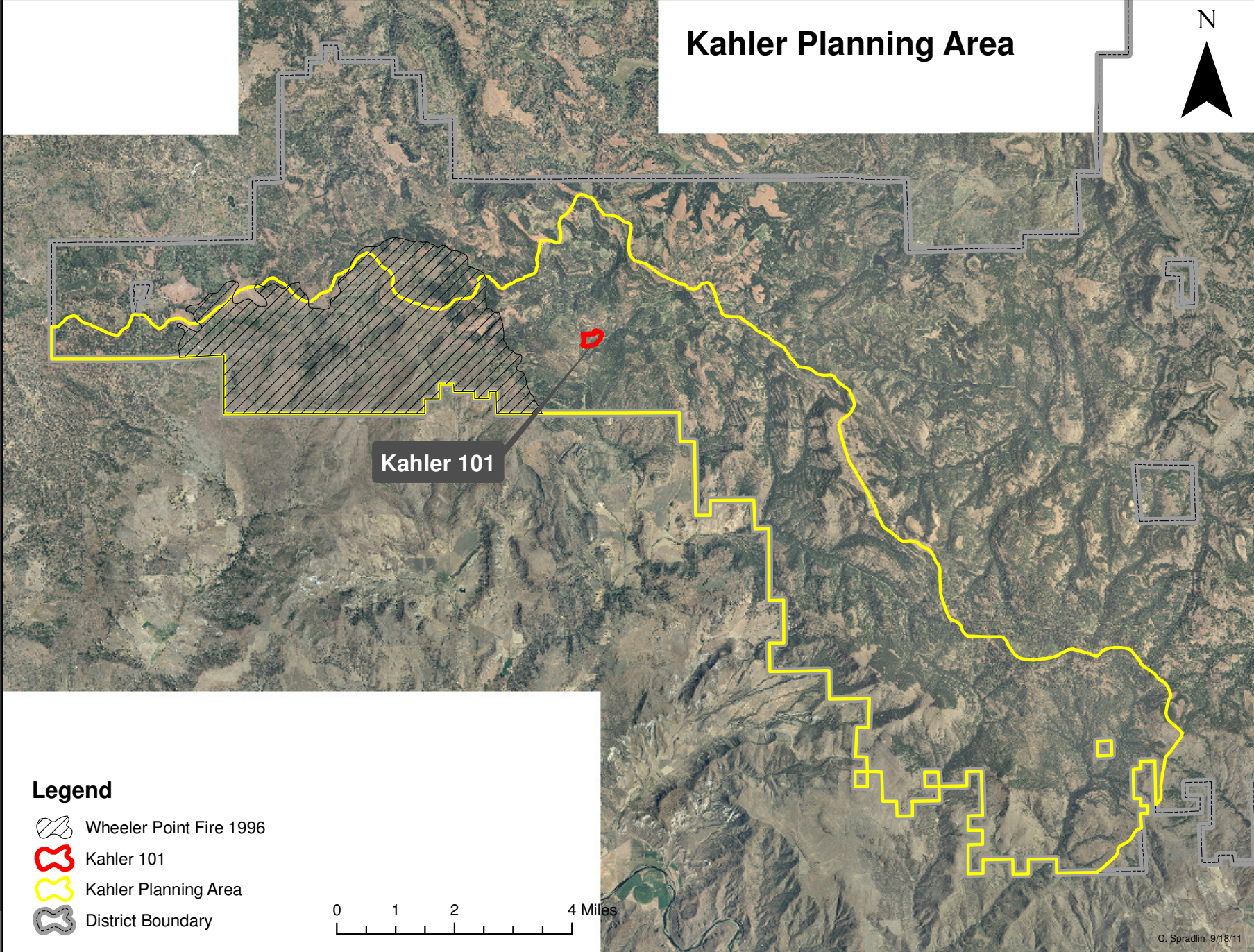
The Landscape: Kahler Planning Area

- Primary Forest Plan Management Area Strategies (MAS):
 - Timber/Forage (E1)
 - Big Game Winter Range (C3)
- Historically disturbed by low/mixed severity fire regime
- 1996 Wheeler Point Fire
- Historic Grazing – Currently 5 allotments







Tamarack Mountain Fire 1928. Guthrie, John D.

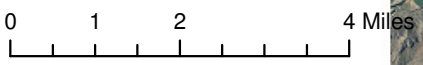
Kahler Planning Area



Kahler 101

Legend

-  Wheeler Point Fire 1996
-  Kahler 101
-  Kahler Planning Area
-  District Boundary



Kahler Planning Area History

- Historically a mix of FS and Kinzua lands
- Private mills 1910s and 20s; FS harvest 1939
- 1939-present:
10 T.S., 12 PCT, fire reforestation and plantation development
- Dense stands dominated by Douglas-fir are over-represented as compared with historic conditions
- Old Forest Single Strata (OFSS) structure is under-represented



Two men sawing a large “yellow pine” – Kinzua Pine Mills Co. Date unknown. Brown, Kenneth S.

Kahler Planning Area Issues

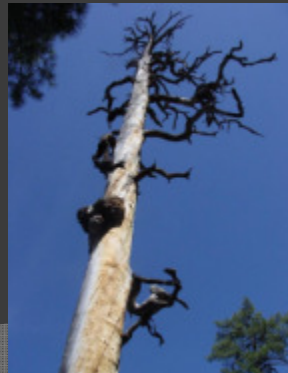
- Heavy western dwarf mistletoe (ponderosa pine) and Douglas-fir dwarf mistletoe infection at the landscape level.
- R6 Sensitive: Lewis' woodpecker, white-headed woodpecker.
- Clean Water Act 303(d) listed streams for excess temperature.
- Noxious weeds
- Mid-Columbia steelhead (Threatened) critical habitat (ESA).



White headed woodpecker
(*Picodes albolarvatus*)



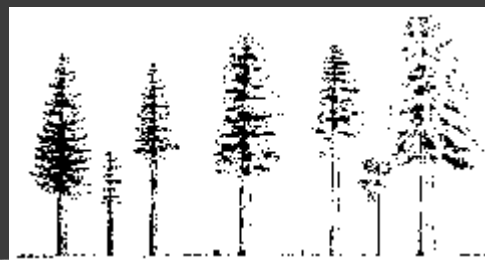
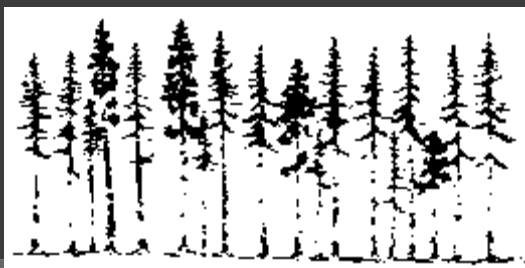
Dwarf Mistletoe in Kahler 101



diffuse knapweed (*Centaurea diffusa*)

Kahler Planning Area Issues

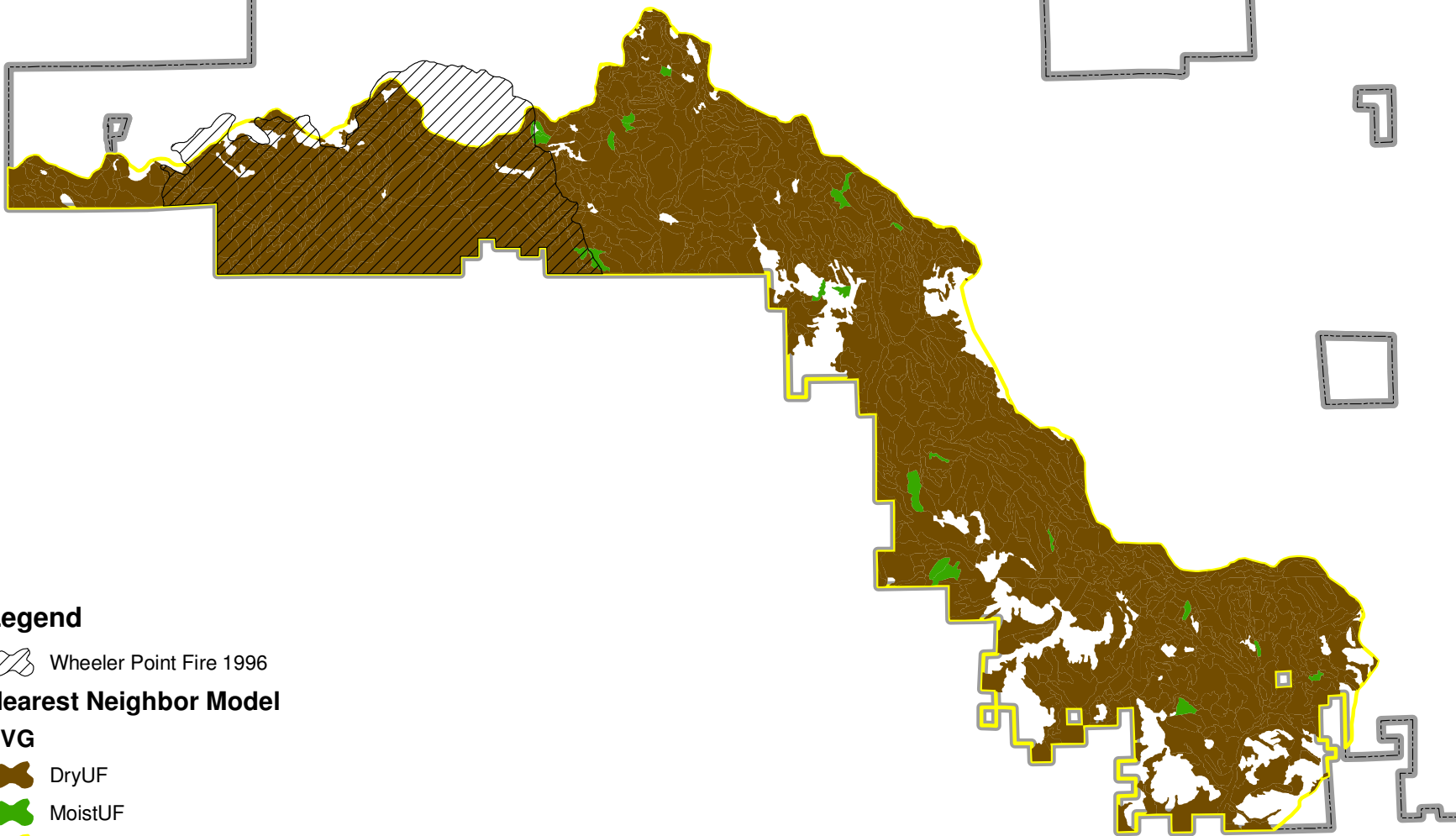
- ◉ Western juniper expansion
- ◉ High density stands
- ◉ Fire Regime Condition Class 2 and 3
- ◉ Bark Beetle and root disease induced mortality in large trees.
- ◉ Aspen decline



Western juniper establishment adjacent to Kahler 101

Kahler Planning Area Potential Vegetaion Groups

N



Legend

 Wheeler Point Fire 1996


Nearest Neighbor Model

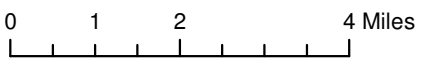
PVG

 DryUF

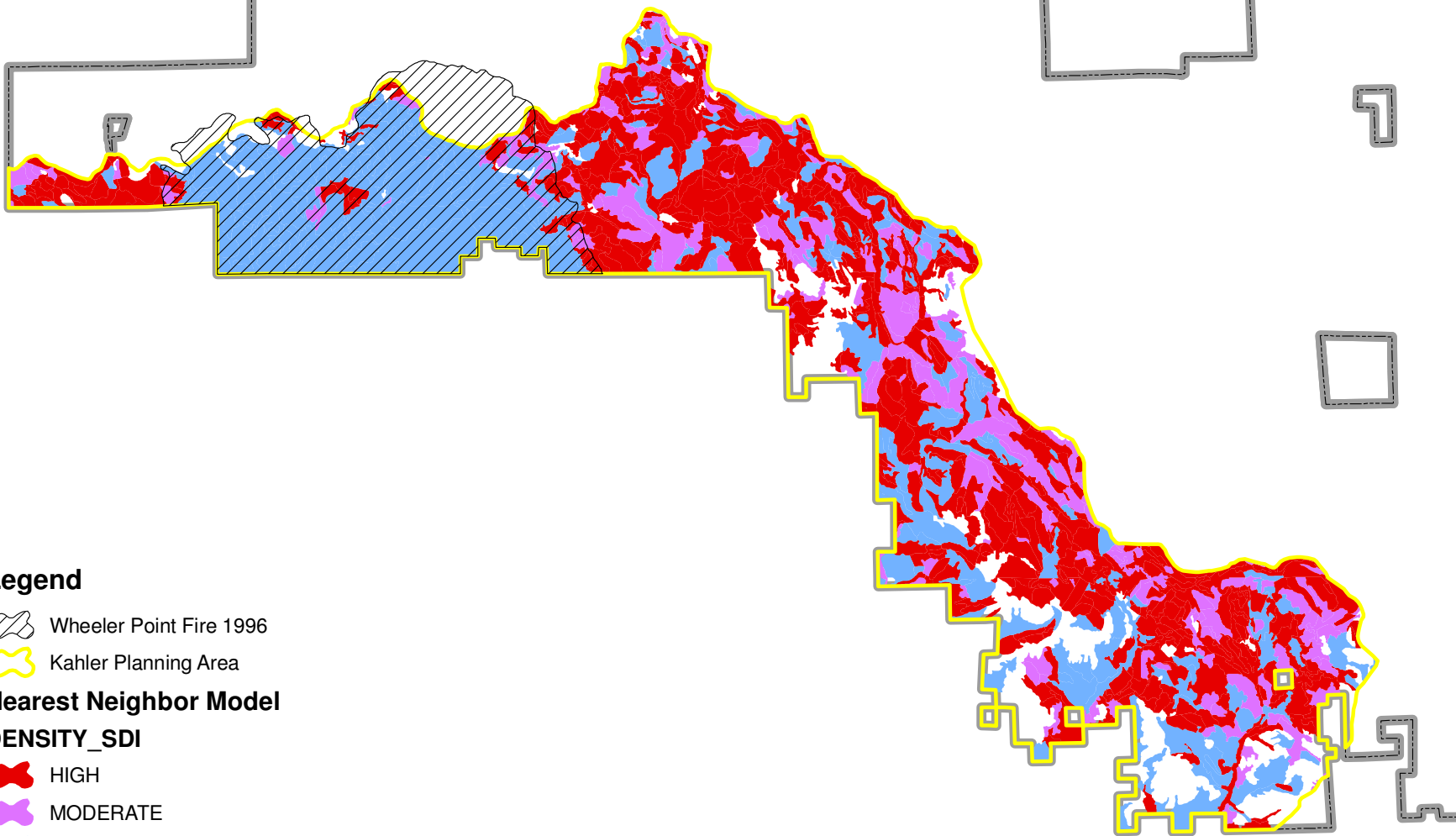
 MoistUF

 Kahler Planning Area



 District Boundary



Kahler Planning Area Forest Stand Density




Legend

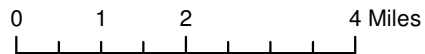
-  Wheeler Point Fire 1996
-  Kahler Planning Area

Nearest Neighbor Model

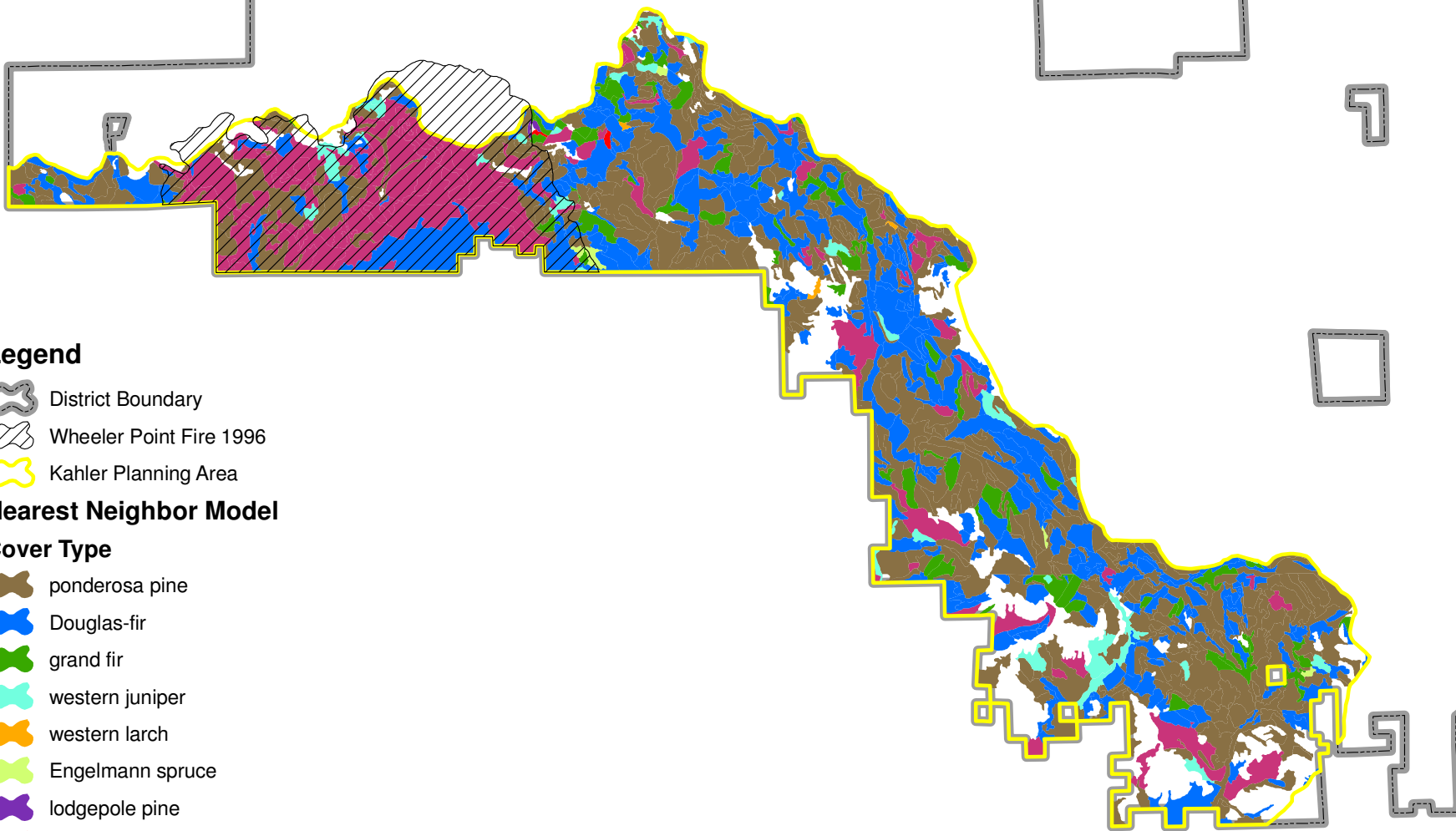
DENSITY_SDI

-  HIGH
-  MODERATE
-  LOW

-  District Boundary



Kahler Planning Area Tree Species Cover



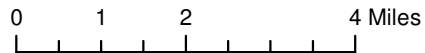
Legend

- District Boundary
- Wheeler Point Fire 1996
- Kahler Planning Area

Nearest Neighbor Model

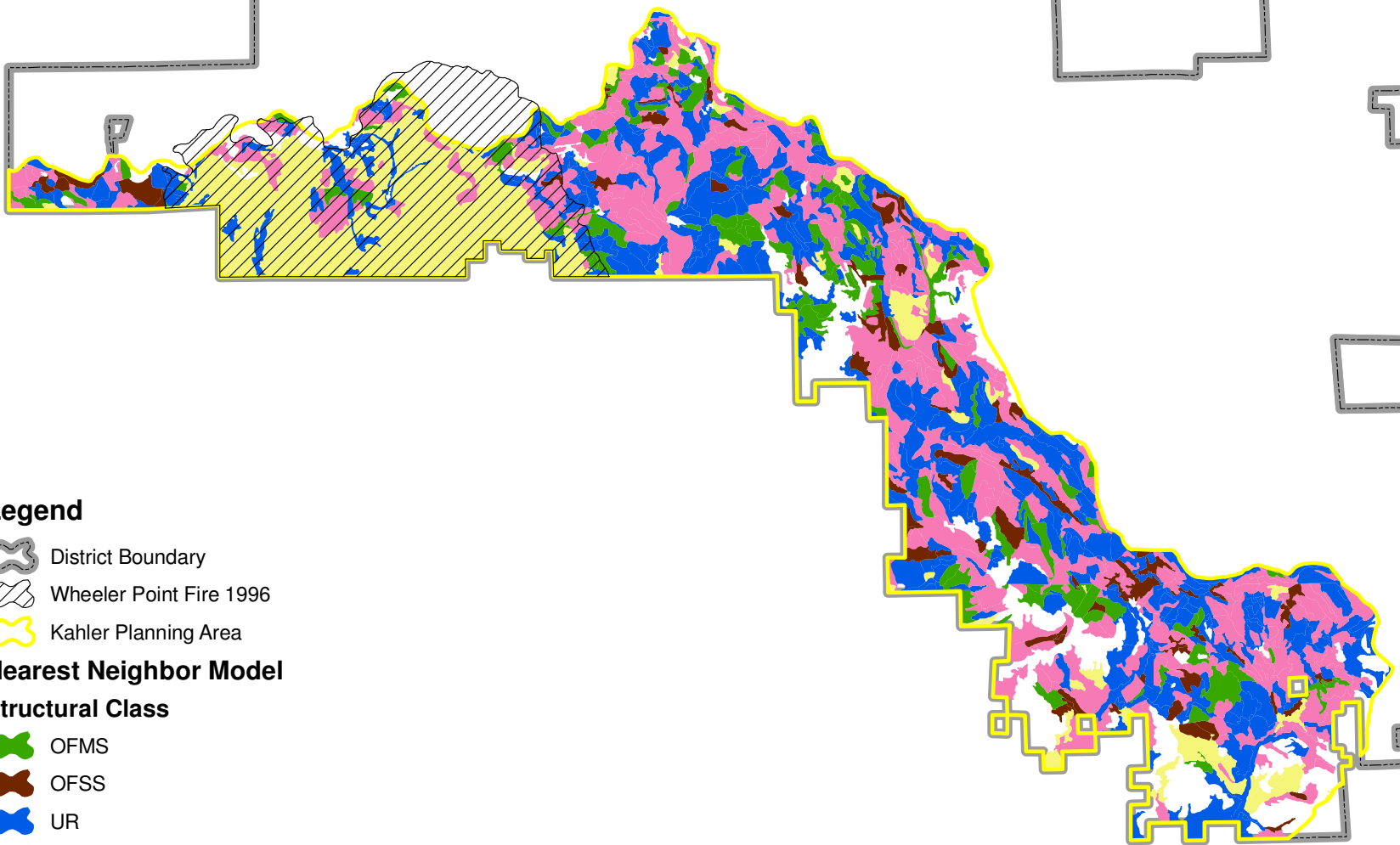
Cover Type

- ponderosa pine
- Douglas-fir
- grand fir
- western juniper
- western larch
- Engelmann spruce
- lodgepole pine
- quaking aspen
- non-stocked



Kahler Planning Area Forest Stand Structure

N



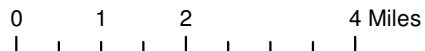
Legend

- District Boundary
- Wheeler Point Fire 1996
- Kahler Planning Area

Nearest Neighbor Model

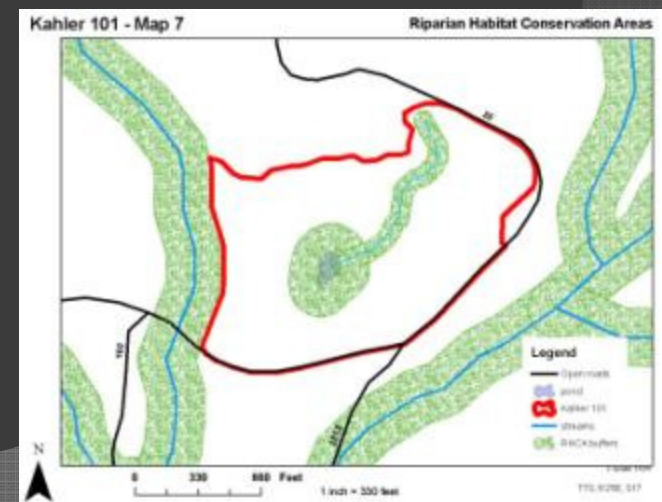
Structural Class

- OFMS
- OFSS
- UR
- SE
- SI



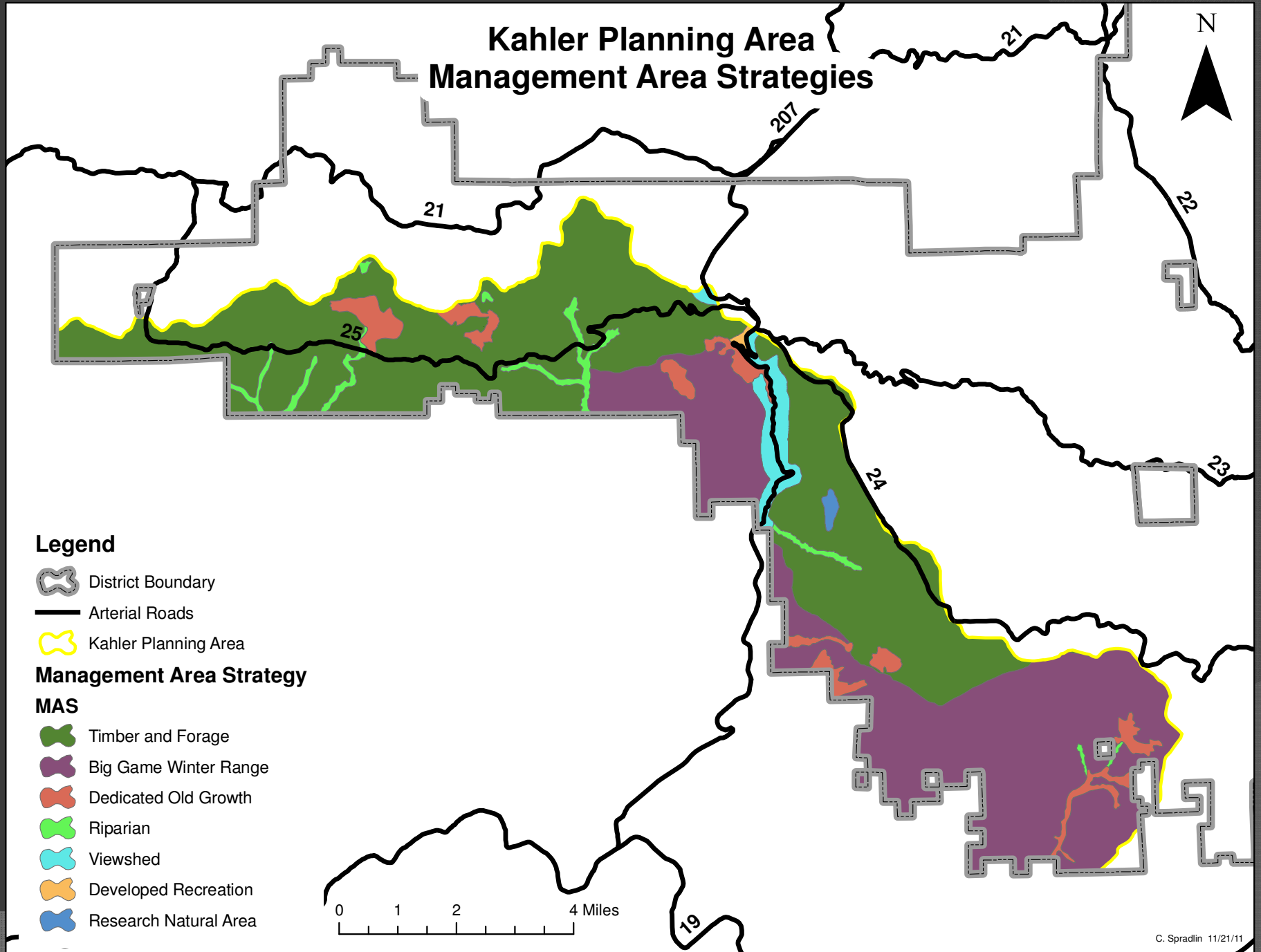
Management Direction

- **Forest Plan - Timber and Forage**
Production of wood fiber (timber) and forage emphasized
 - Uneven-aged management is the preferred silvicultural system in ponderosa pine plant communities
 - Rx fire and Integrated Pest Management
- **Forest Plan - Big Game Winter Range**
High levels of potential habitat effectiveness and high quality forage for big game is emphasized.
 - Habitat Effectiveness Index no less than 70
- **PACFISH – RHCA Buffers by stream class**
- **Eastside Screens** – 21” DBH harvest limit, HRV analysis, LOS, snags, down wood
- **Interior Columbia Basin Strategy**, Wall and Potamus Ecosystem Analyses



Kahler Planning Area Management Area Strategies

N



Legend

District Boundary

Arterial Roads

Kahler Planning Area

Management Area Strategy

MAS

Timber and Forage

Big Game Winter Range

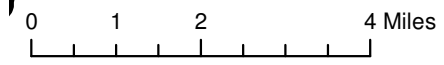
Dedicated Old Growth

Riparian

Viewshed

Developed Recreation

Research Natural Area



Kahler NEPA Next Steps

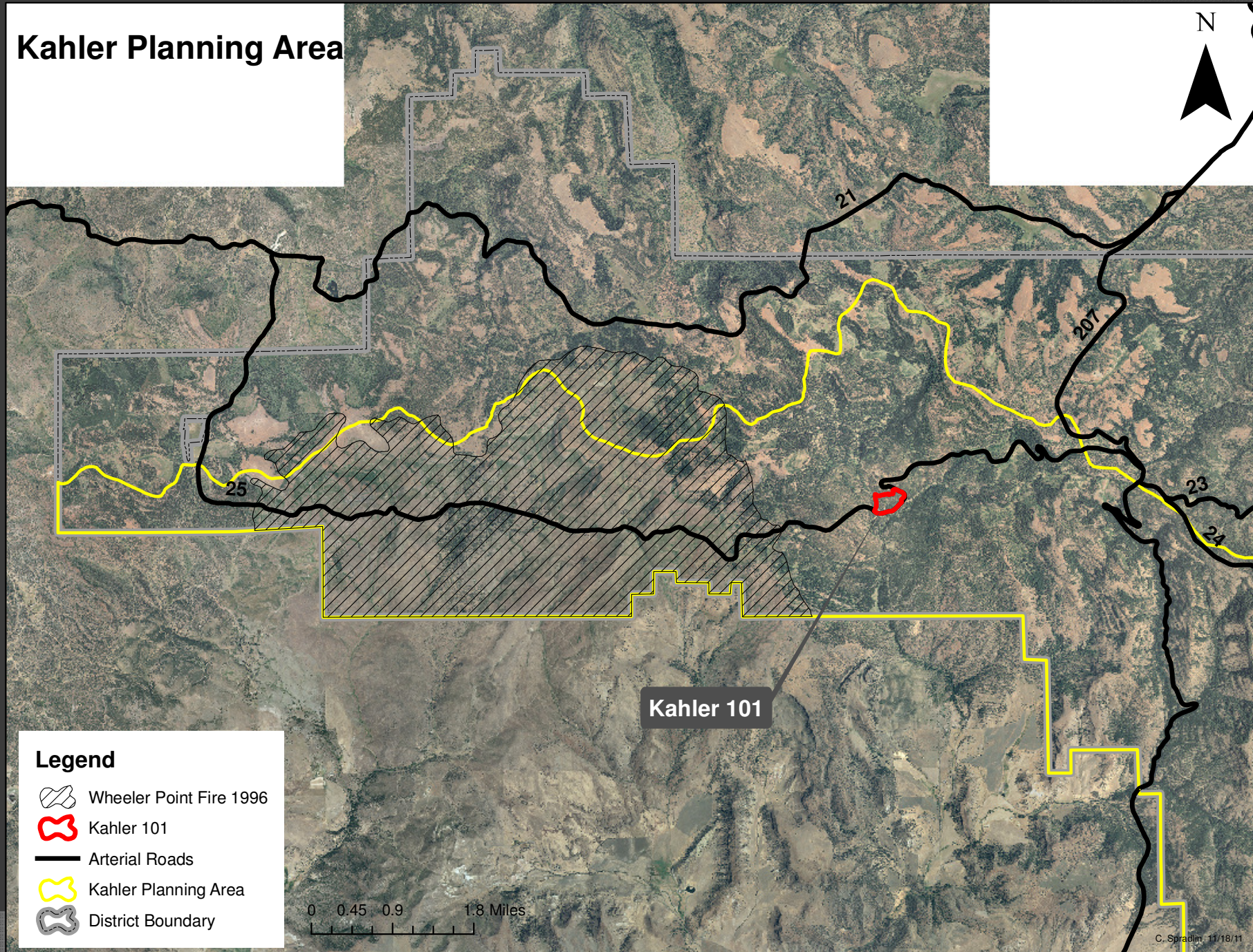
1. Proposed Action Development
2. Public Scoping
3. Alternative Development
4. Analysis by Specialist
5. Draft NEPA Document
6. Public Review
7. Final NEPA Document
8. Decision

Additional Maps






- West and East Orthophotos
- Allotments, pastures, water sources
- Roads and topos
- Aspen stands

Kahler Planning Area

N

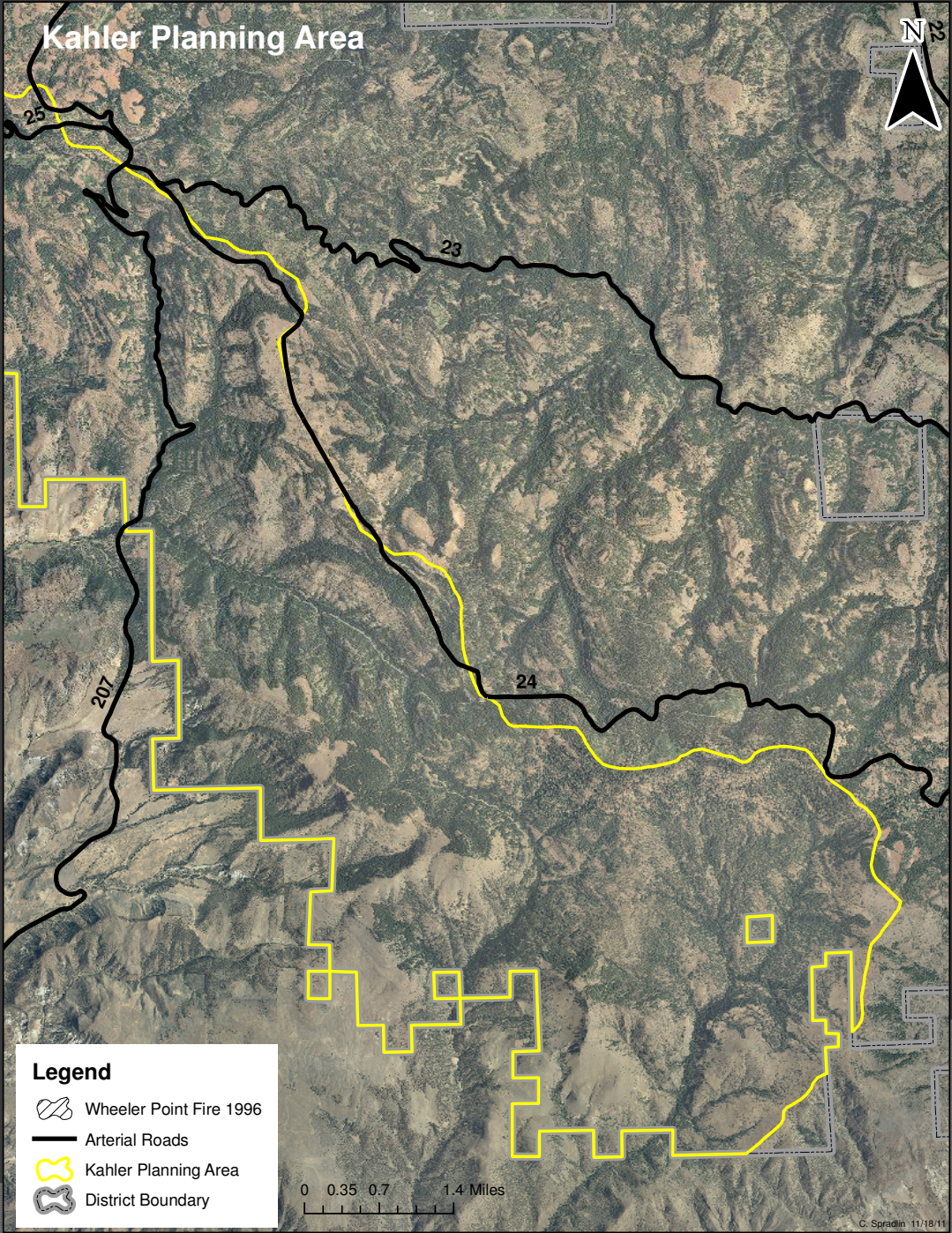


Legend





-  Wheeler Point Fire 1996
-  Kahler 101
-  Arterial Roads
-  Kahler Planning Area
-  District Boundary

0 0.45 0.9 1.8 Miles

Kahler Planning Area

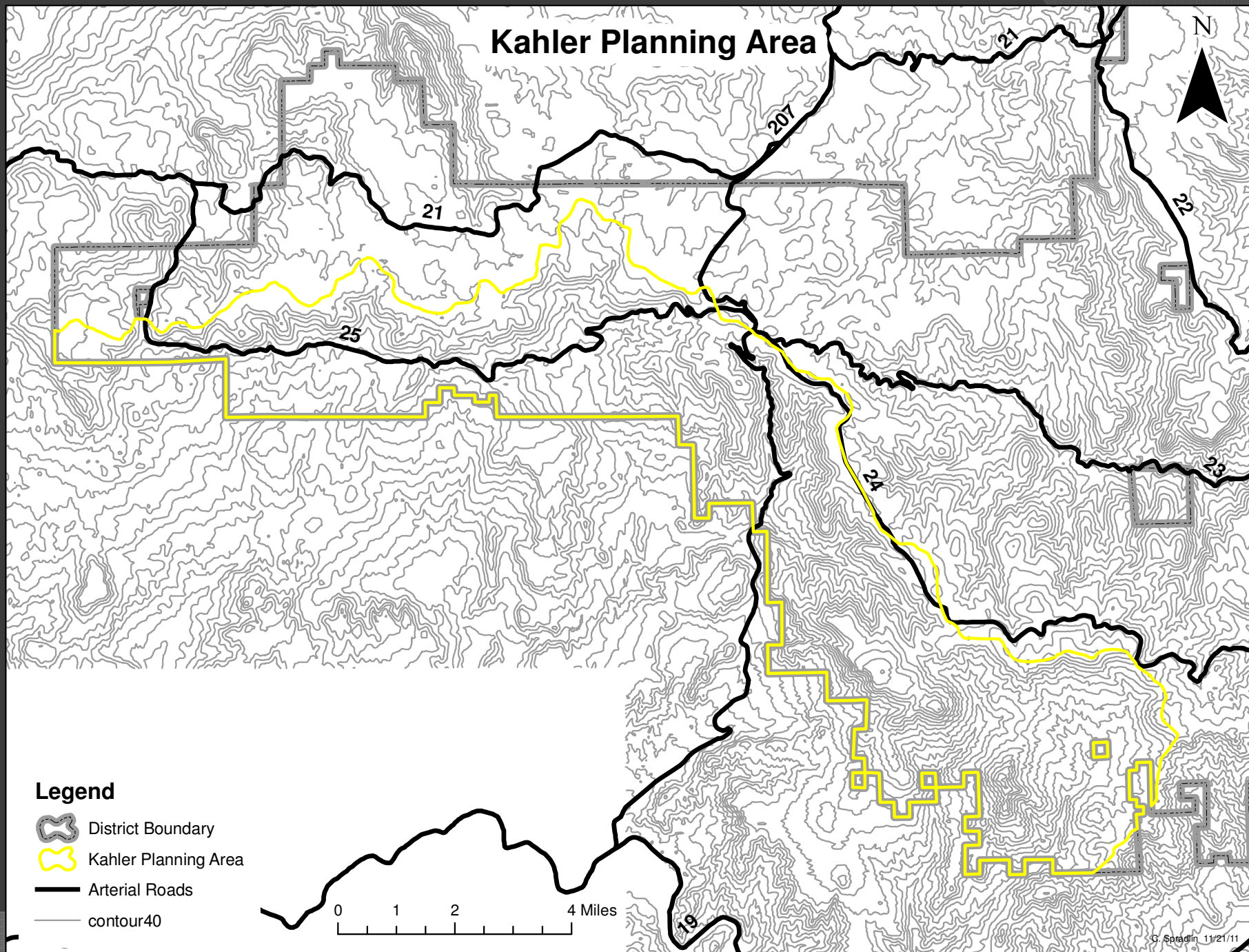


Legend





-  Wheeler Point Fire 1996
-  Arterial Roads
-  Kahler Planning Area
-  District Boundary

0 0.35 0.7 1.4 Miles

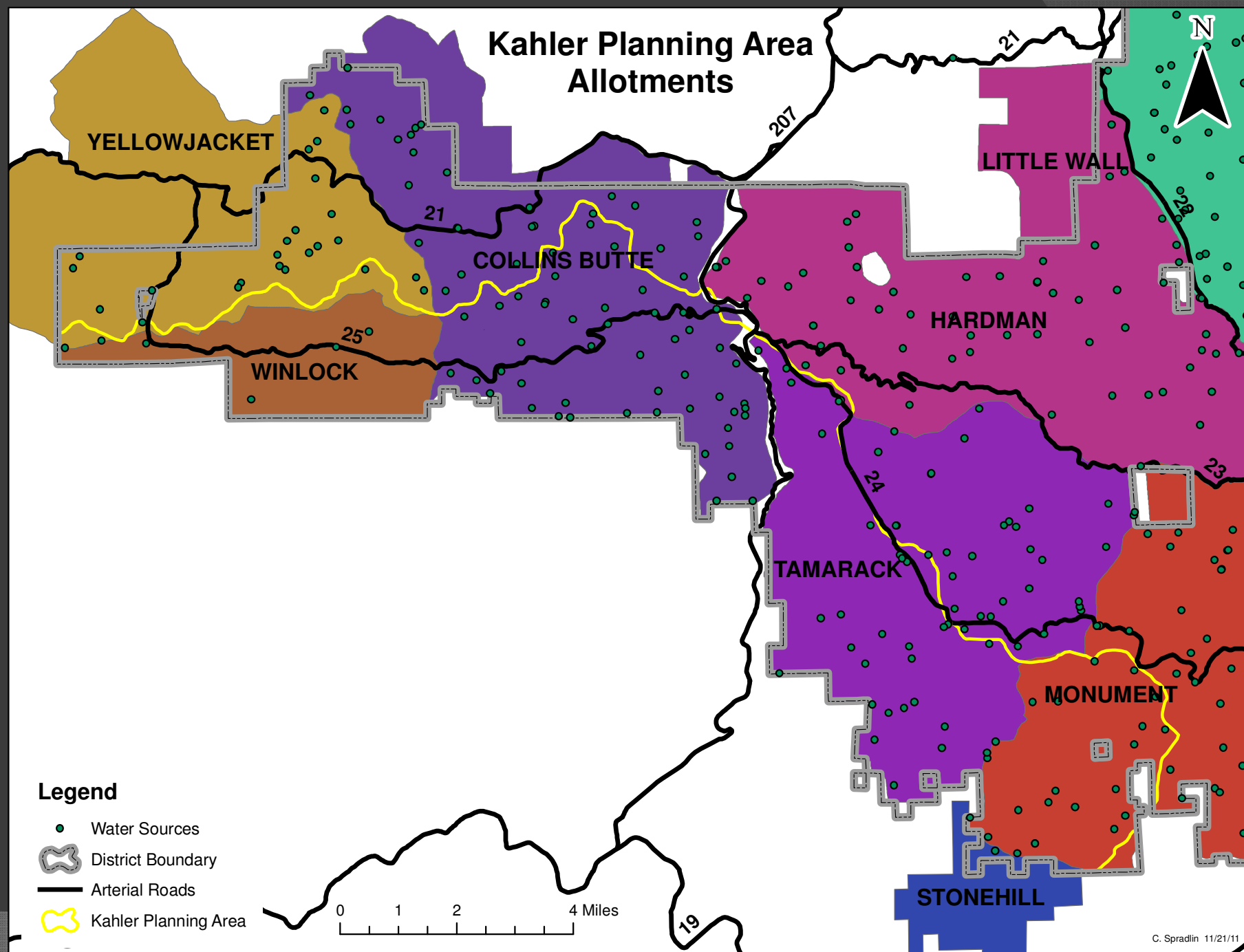
Kahler Planning Area



Legend

-  District Boundary
-  Kahler Planning Area
-  Arterial Roads
-  contour40

Kahler Planning Area Allotments

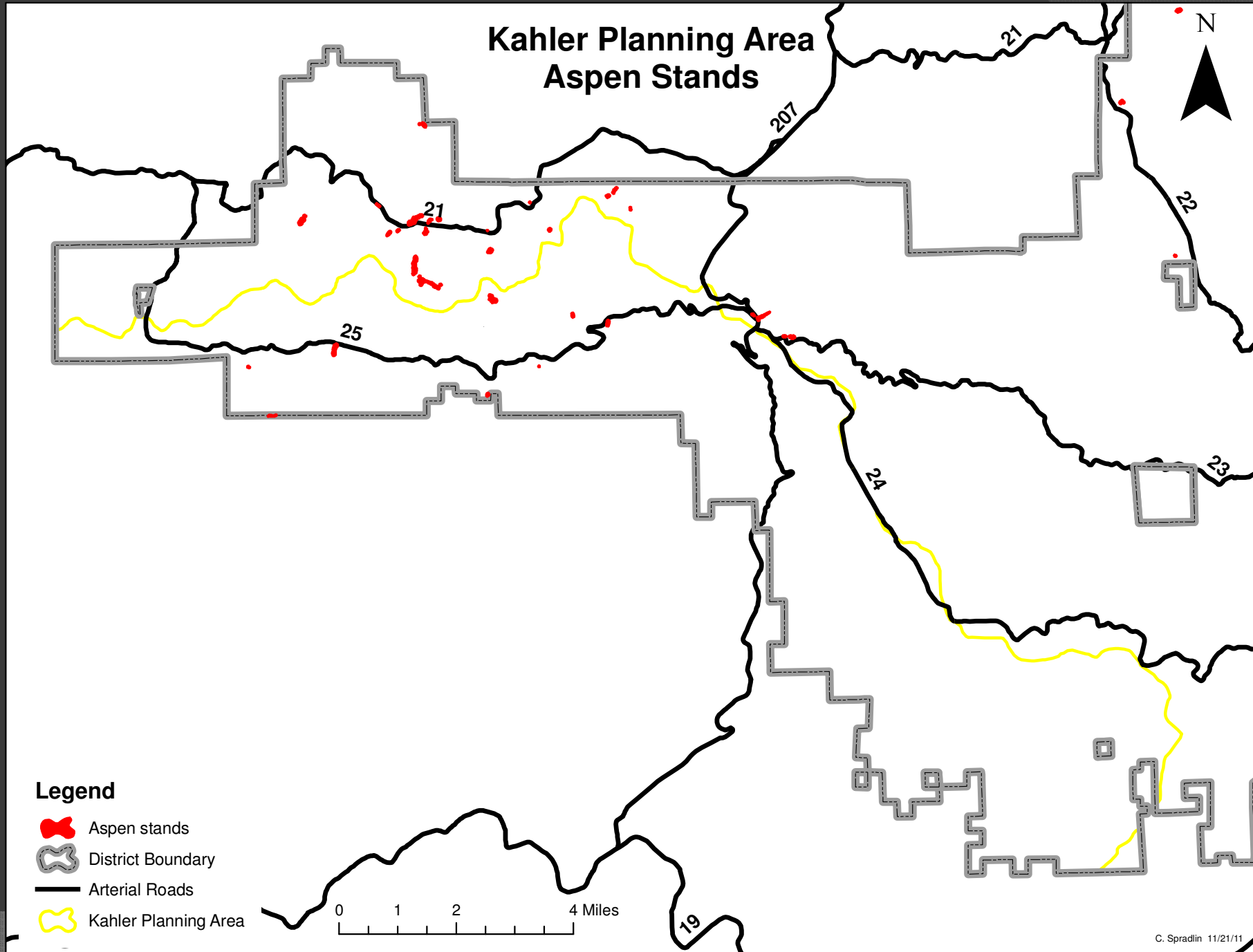


Legend





- Water Sources
- ⬭ District Boundary
- Arterial Roads
- ⬭ Kahler Planning Area

0 1 2 4 Miles

Kahler Planning Area Aspen Stands



Legend

-  Aspen stands
-  District Boundary
-  Arterial Roads
-  Kahler Planning Area

