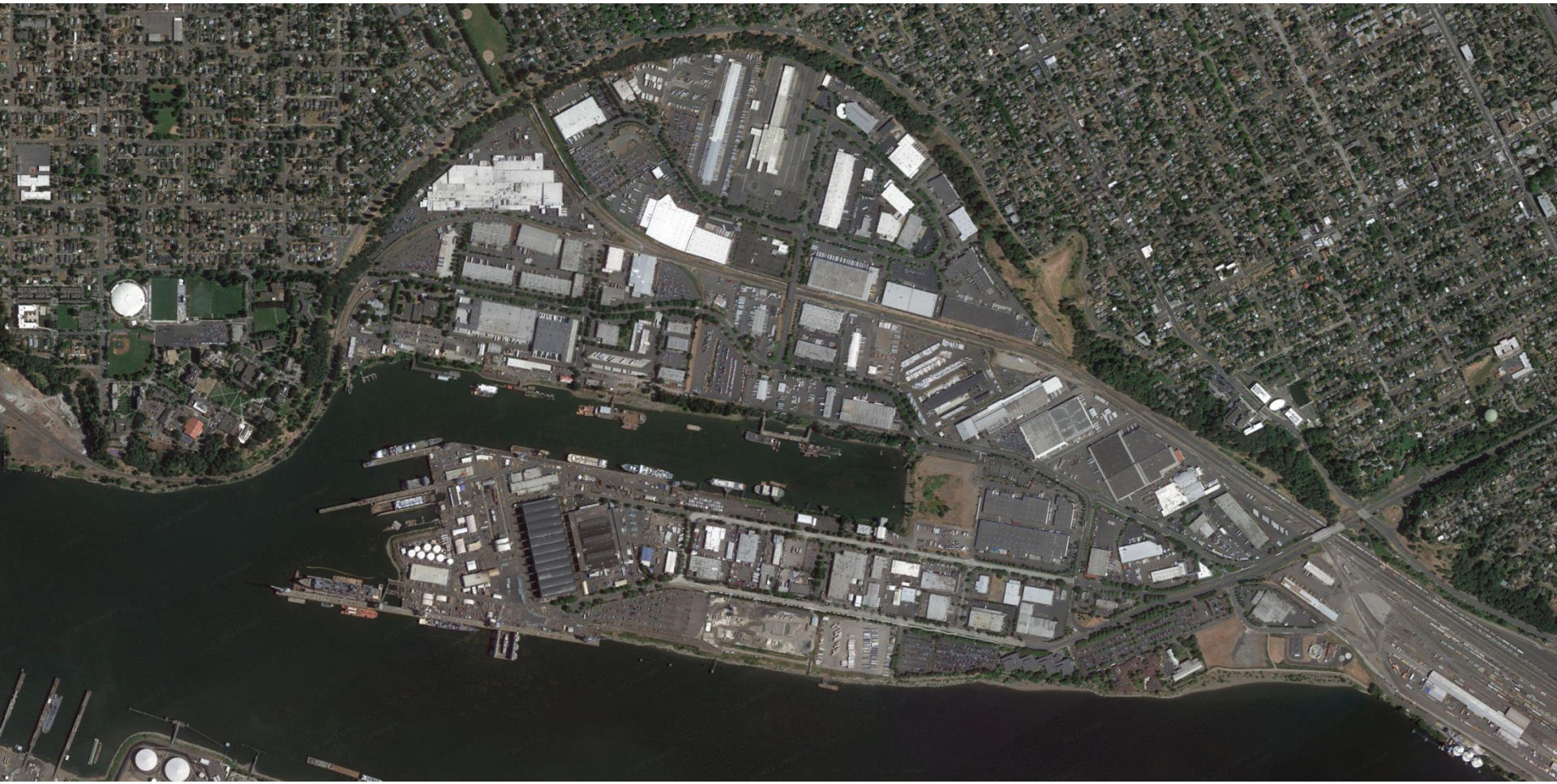


# Class Project

Env 382



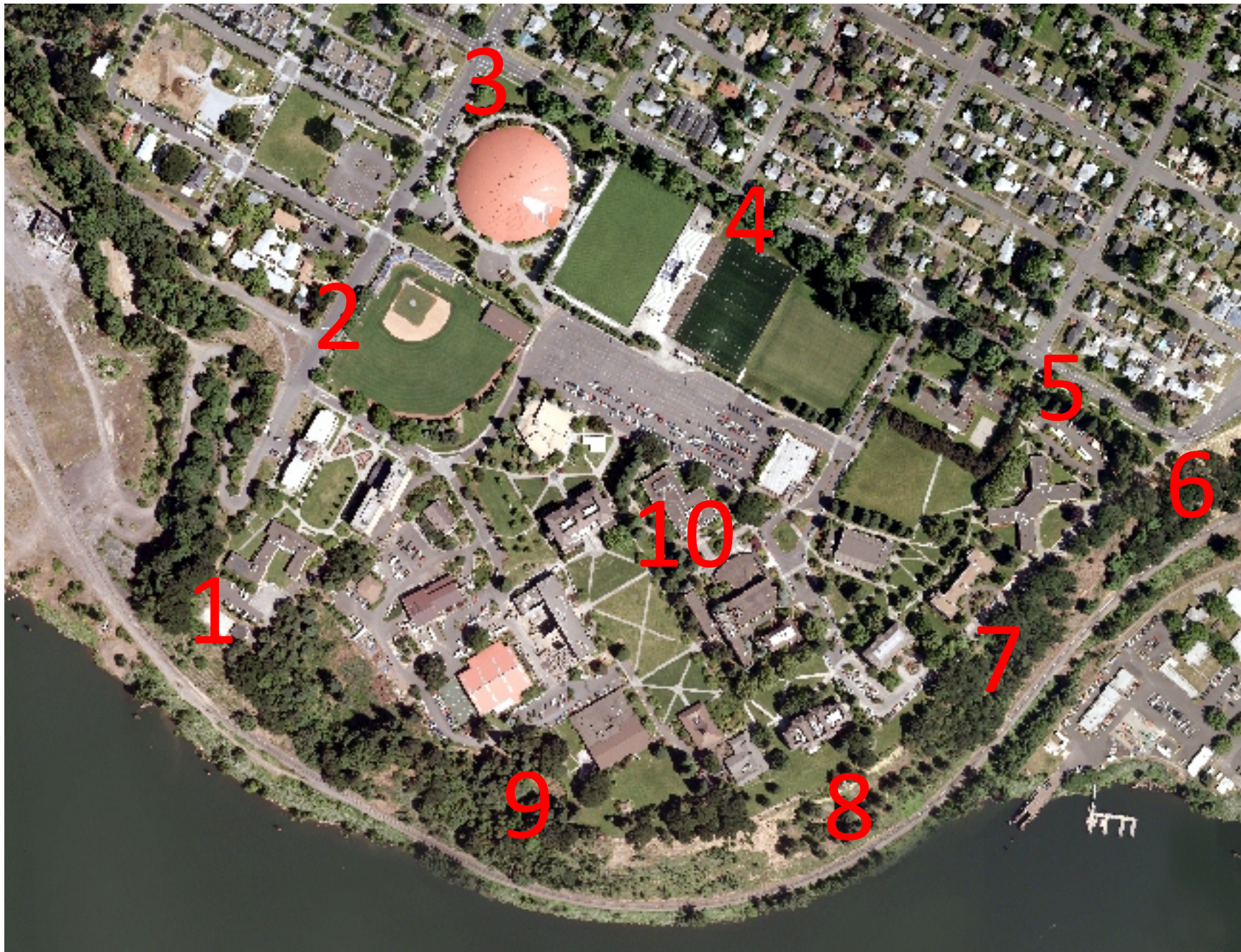












# Project Description

- Two Teams (5 to 7 people per team)
- Team Leader (Excused from mid-term, will receive automatic “A” on project and mid-term)
- Cover tens points, two times a day
- With 5 to 7 people per team, each person no more than one or two days per week
- Morning team, Afternoon/Evening Team
- Team leader coordinates coverage and compiles data
- If walking campus is not possible for some students, an alternative survey project will be assigned

# Schedule

- Team leader – short mid-course presentation  
March 4
- Last data collection day April 10
- Team leader – final presentation April 15
- Get started now

# Times

## **Morning Team**

- 6-8 am
- 10 am - noon

## **Afternoon/Evening Team**

- 3-5 pm
- 7-9 pm



# Data Sheet

(Each Team, 2 sheets per day)

Station	Date/Time	“Chemical”	“Farm”	No odor	Weather
1					
2					
3					
4					
5					
6					
7					
8					
9					
10					

# Data Reduction

- Which Team
  - Date started, date finished, dates missed
  - # days and % of days with any odor
  - # days and % of days with “chem.” odor
  - # days with and % of days with “farm” odor
  - Dates with any odor\*
  - Dates with “chem.” odor\*
  - Dates with “farm” odor\*
- \*to tie data together from both teams



# Data Reduction (Cont.)

- # days and % of days odor detected at each of the 10 stations
- # days and % of days “chem.” odor detected at each of 10 stations
- # days and % of days “farm” odor detected at each of 10 stations
- Several paragraphs describing, most frequent times, correlation with weather, any anecdotal observations