

The Sacramento Levee System

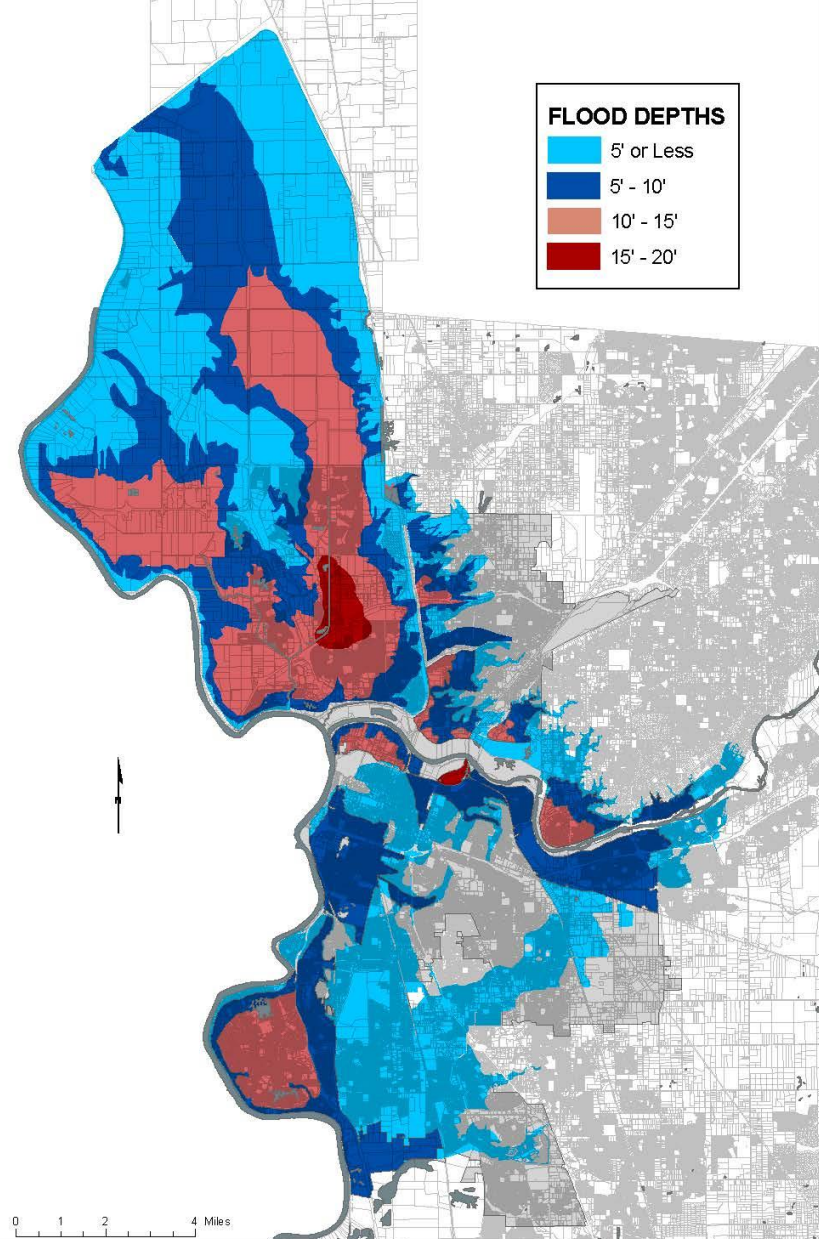
100,000 residential
properties

5000+ commercial
properties

Various levees
certified by USACE
in 1998, 2005, 2007

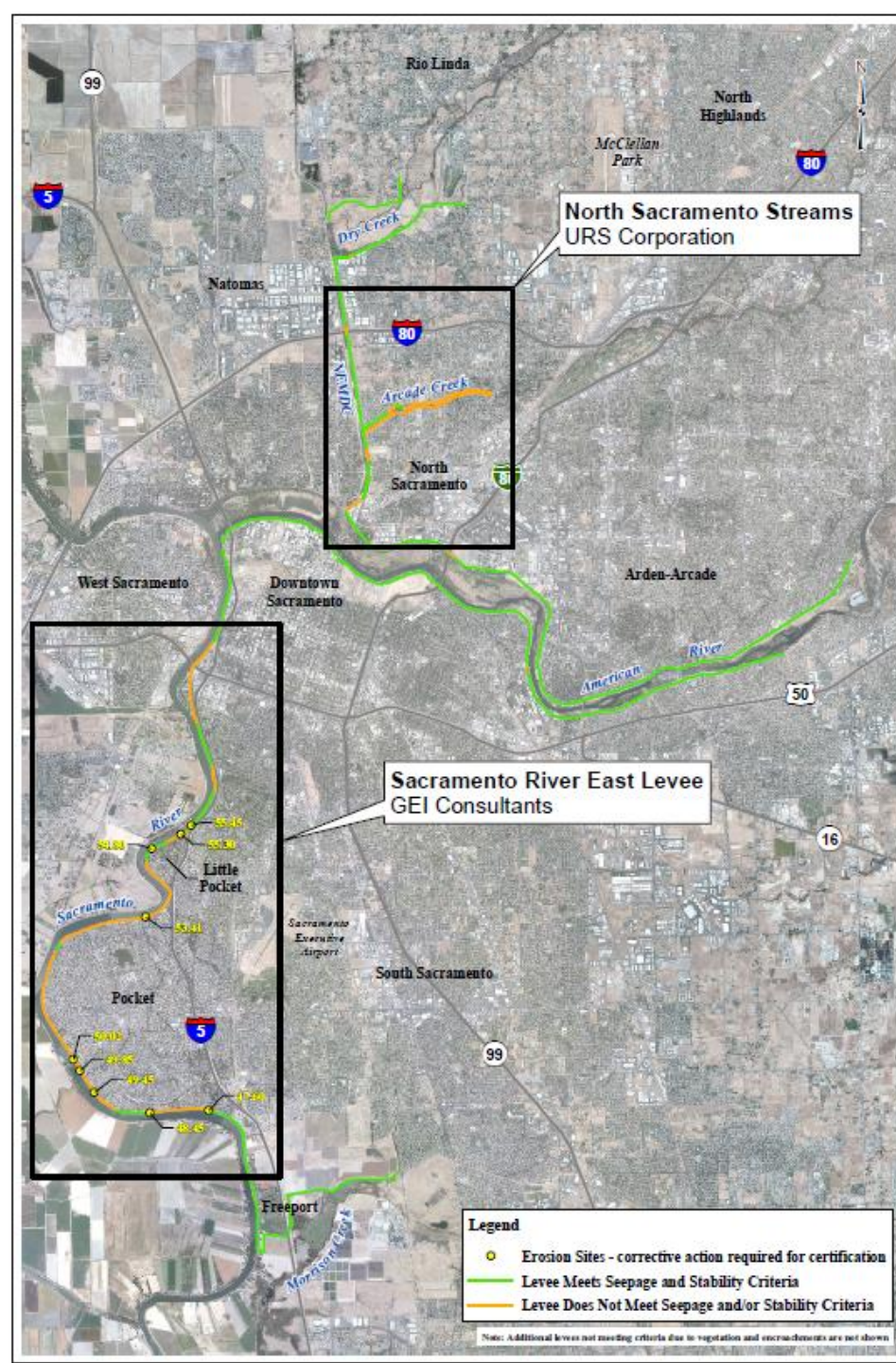


Areas Dependent on Levees
for Sacramento River, American River,
Steelhead Creek (aka NEMDC),
Arcade Creek and Dry/Robla Creek



Levee Accreditation Program

- 58 miles to accredit for FEMA
- Up to 12 miles need remediation
- Address encroachments



Actions taken by Sacramento

- SAFCA is the lead agency for accreditation
 - Completed initial assessment of levee system
 - Selected two design firms to develop alternatives and employed environmental and real estate services
 - Develop funding strategy to implement program
 - Communicate to FEMA and Land Use agencies

Take ownership of certification effort