

Chp 5 Hierarchy: Conifers

1. Biological Prioritization

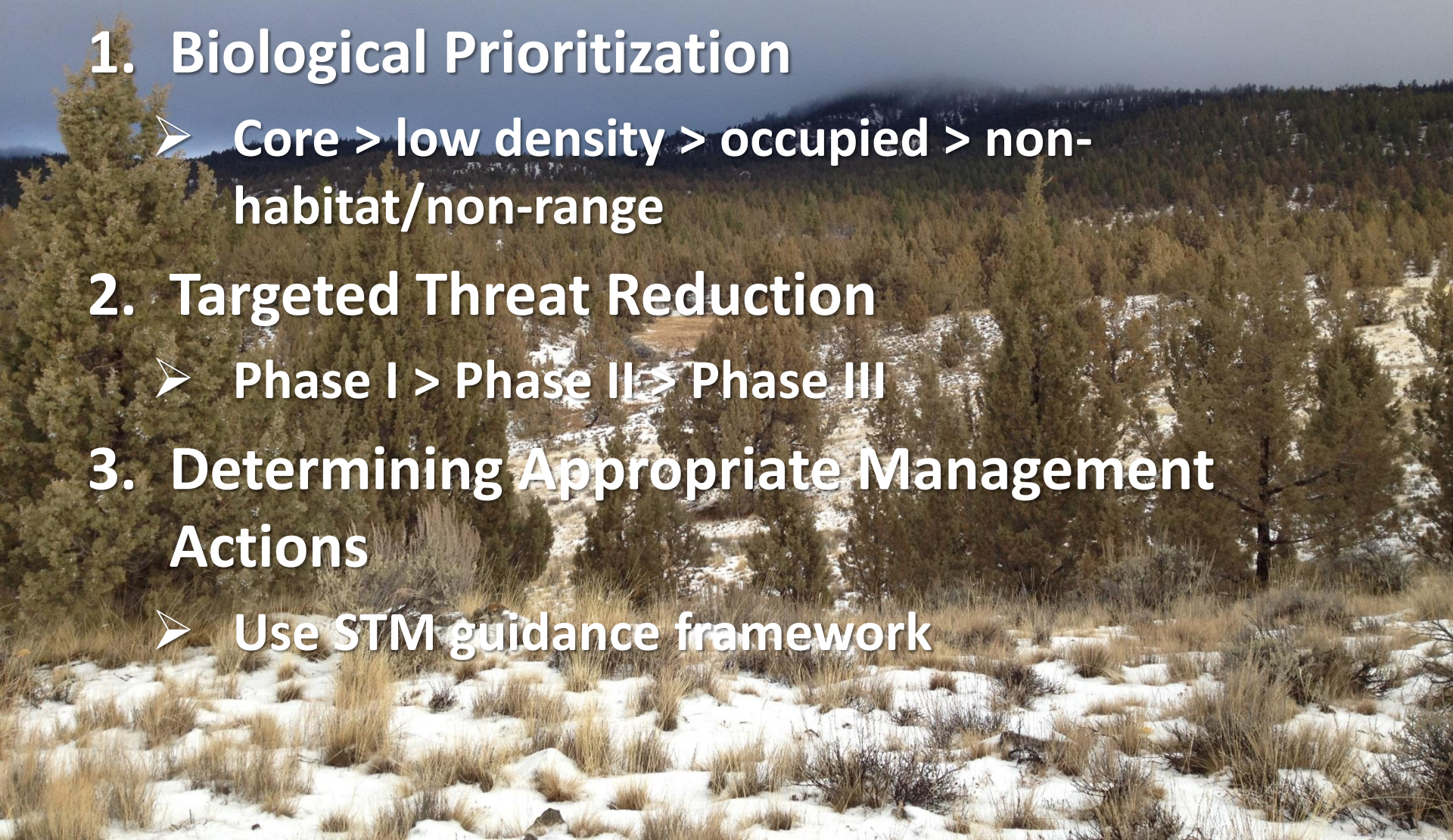
- Core > low density > occupied > non-habitat/non-range

2. Targeted Threat Reduction

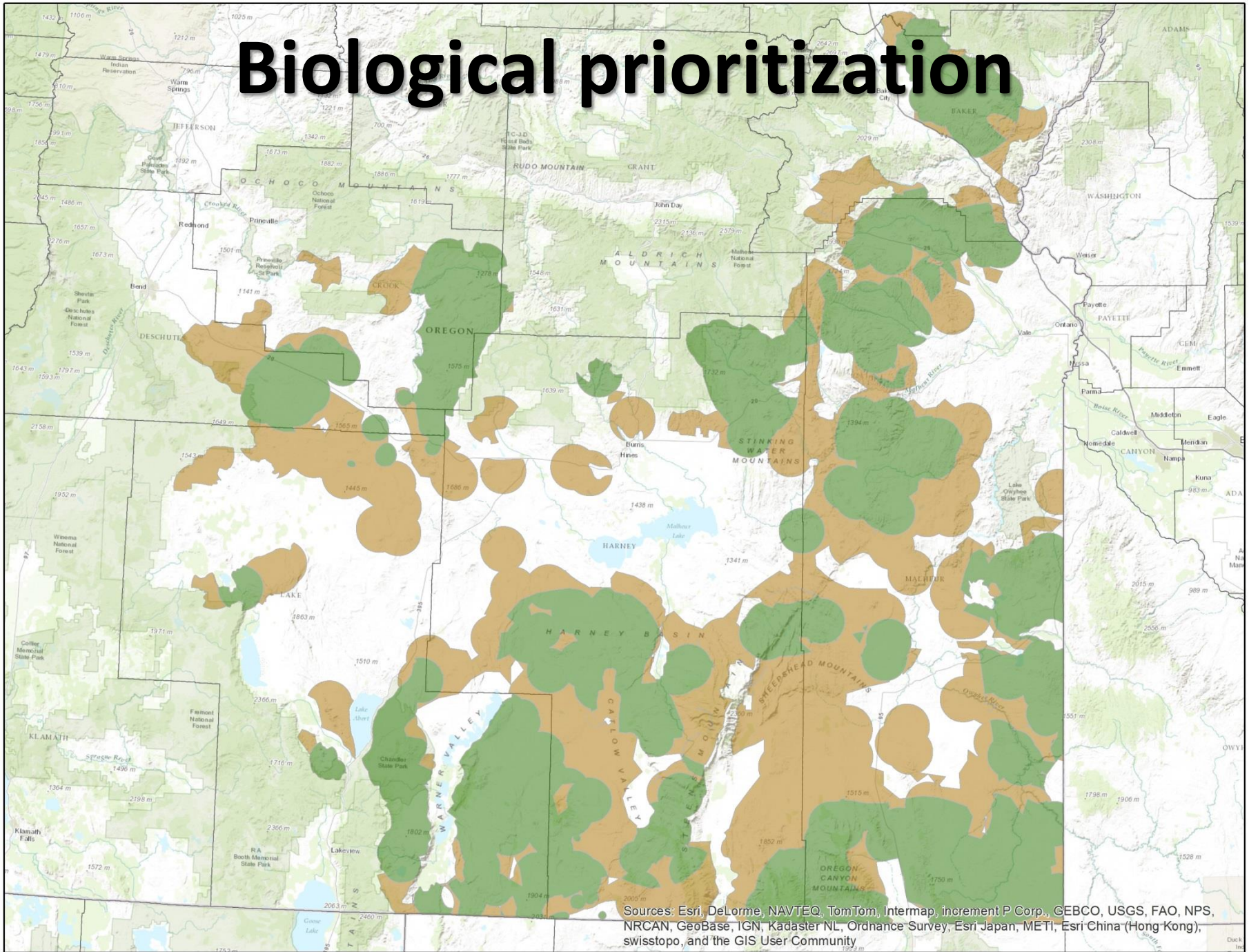
- Phase I > Phase II > Phase III

3. Determining Appropriate Management Actions

- Use STM guidance framework

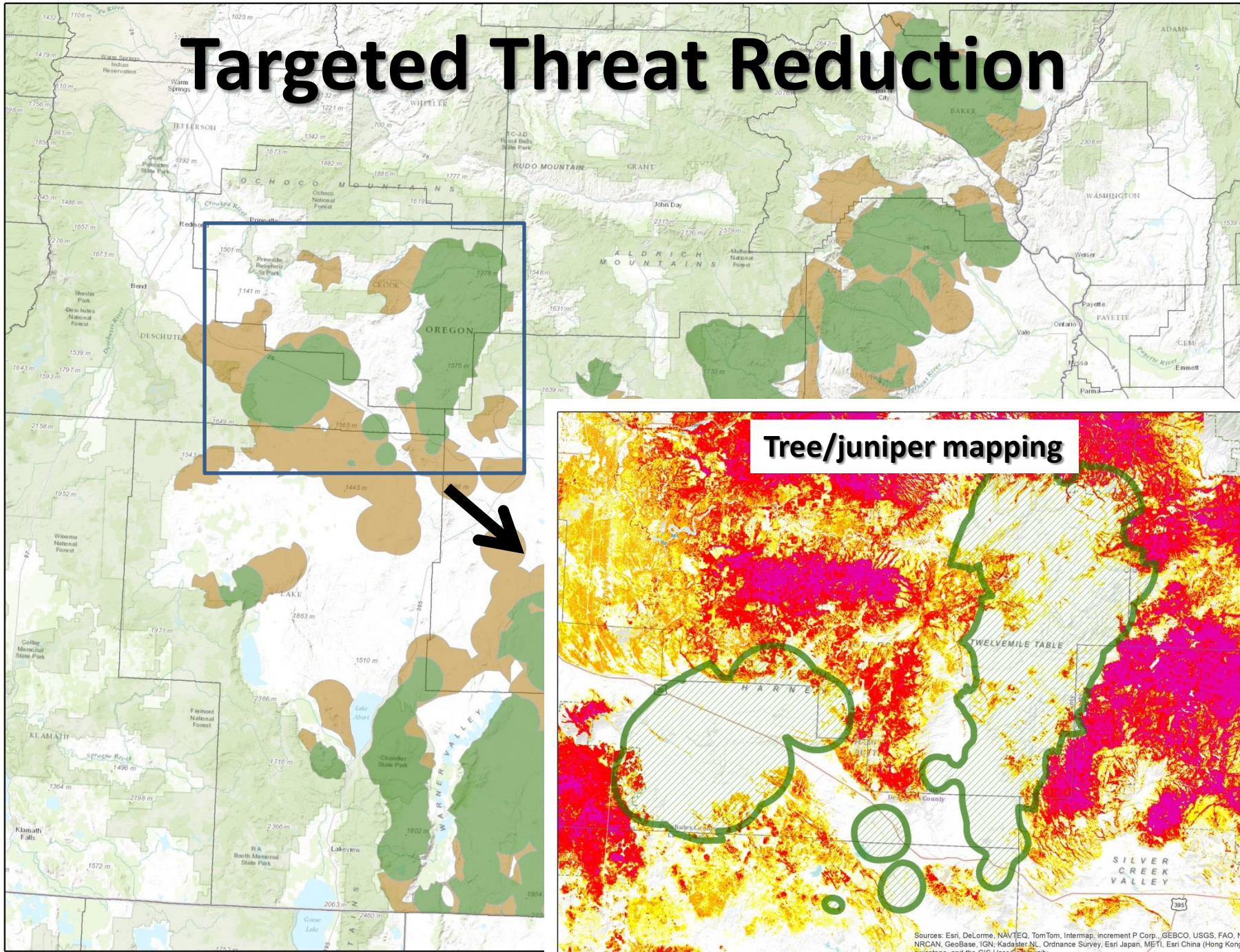


Biological prioritization



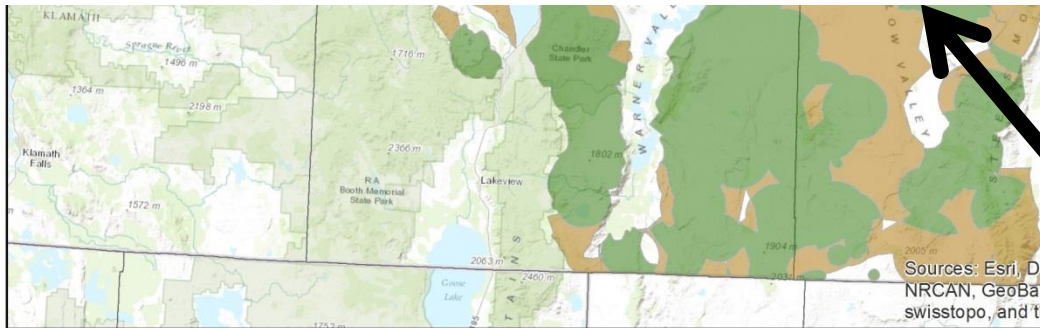
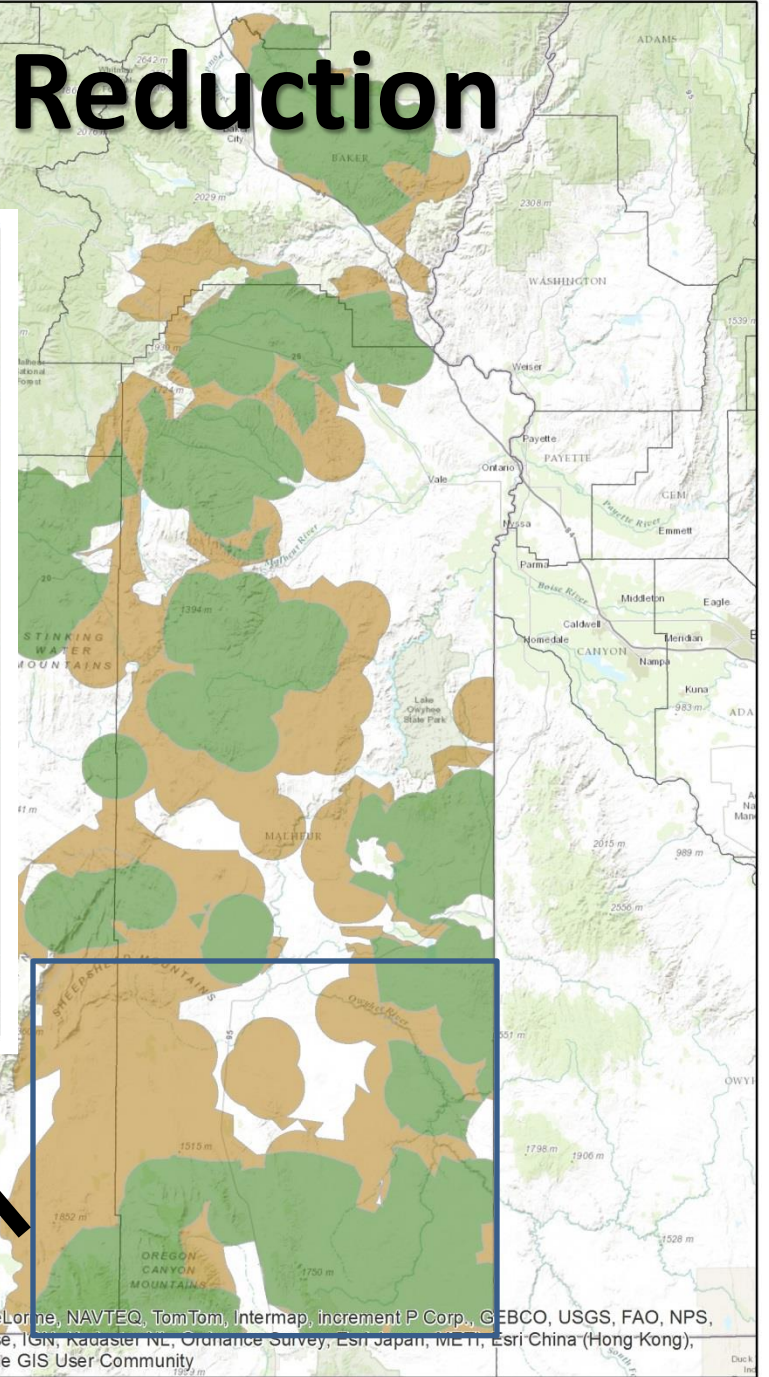
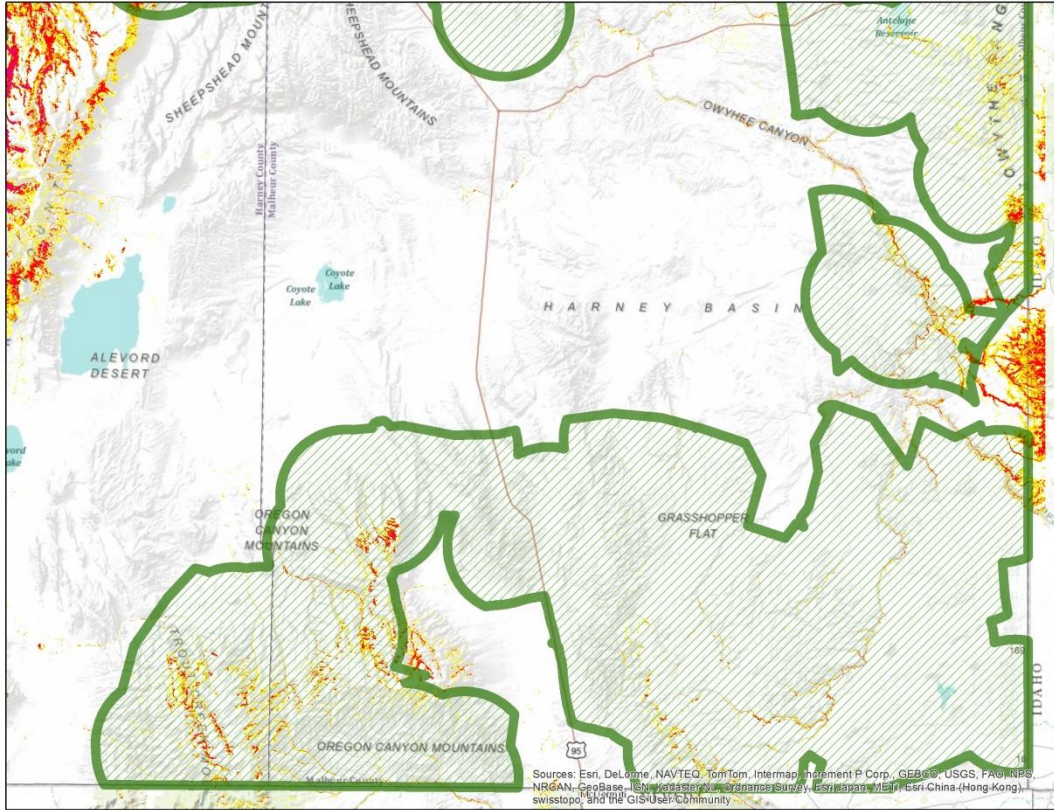
Sources: Esri, DeLorme, NAVTEQ, TomTom, Intermap, increment P Corp., GEBCO, USGS, FAO, NPS, NRCAN, GeoBase, IGN, Kadaster NL, Ordnance Survey, Esri Japan, METI, Esri China (Hong Kong), swisstopo, and the GIS User Community

Targeted Threat Reduction

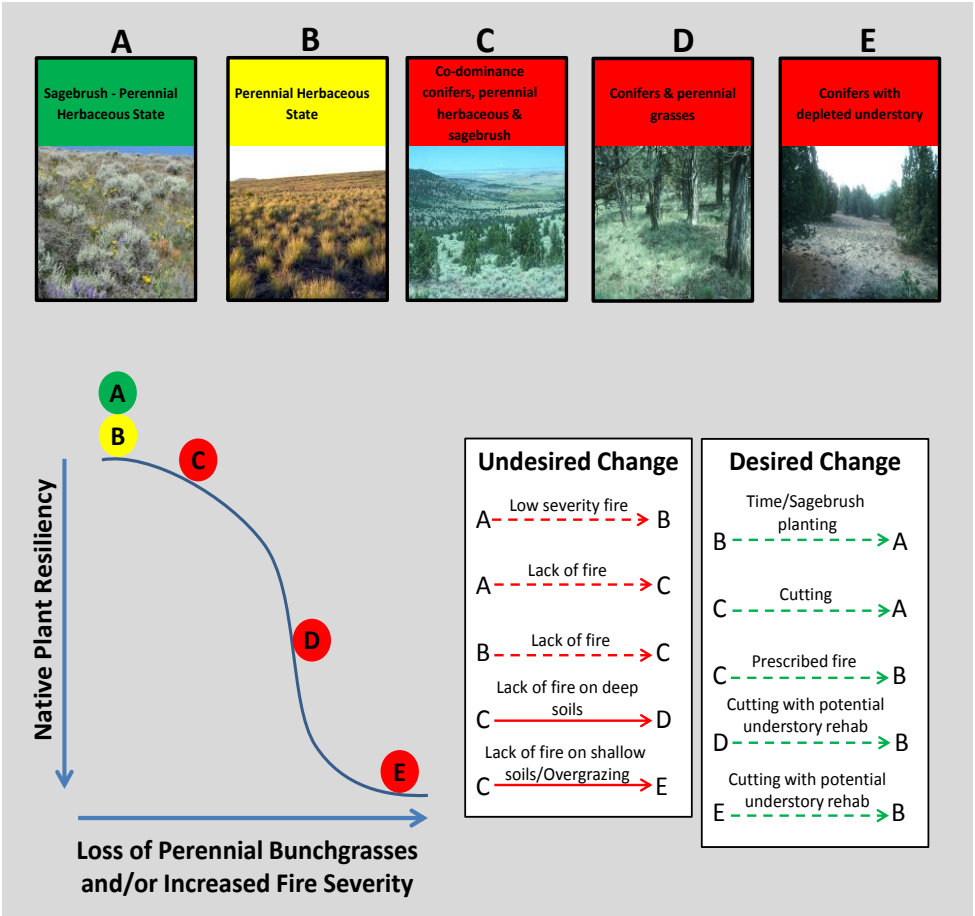
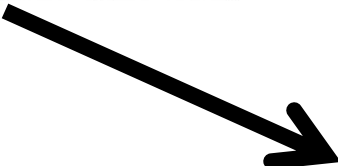
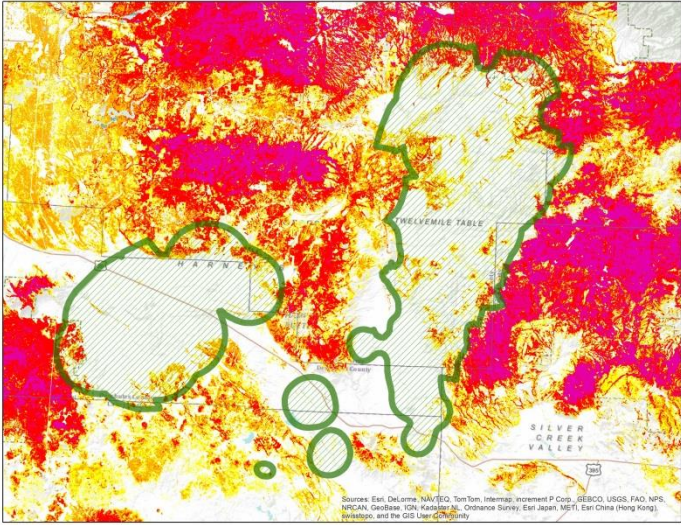


Sources: Esri, DeLorme, NAVTEQ, TomTom, Intermap, increment P Corp., GEBCO, USGS, FAO, NPS, NRCAN, GeoBase, IGN, Kadaster NL, Ordnance Survey, Esri Japan, METI, Esri China (Hong Kong), swisstopo, and the GIS User Community

Targeted Threat Reduction



Determining Appropriate Management Actions



Chp 5 Hierarchy: Annual grasses

1. Biological Prioritization

- Core > low density > occupied > non-habitat/non-range

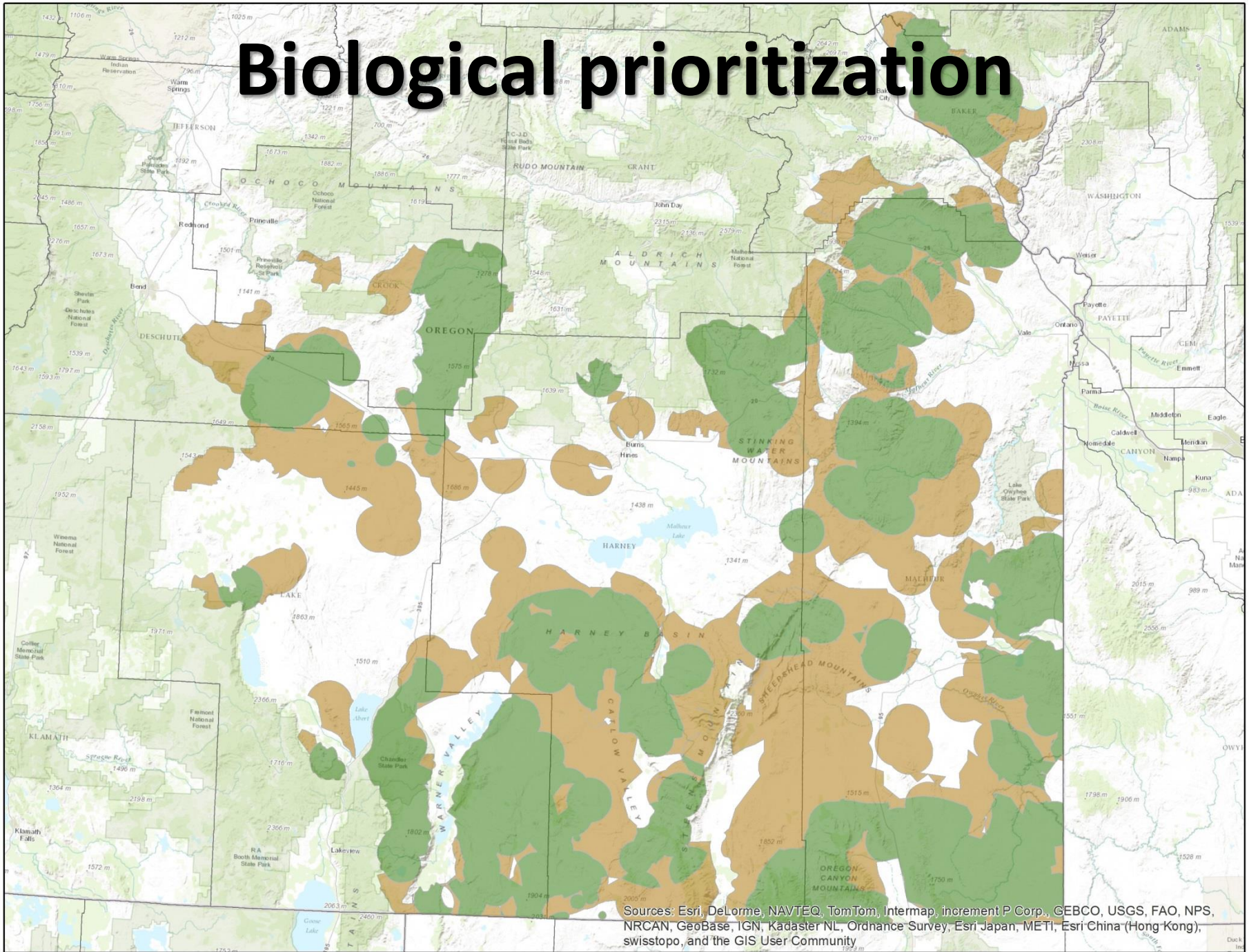
2. Targeted Threat Reduction

- Current status
- WAFWA Risk & Resilience data

3. Determining Appropriate Management Actions

- Use STM guidance framework

Biological prioritization



Sources: Esri, DeLorme, NAVTEQ, TomTom, Intermap, increment P Corp., GEBCO, USGS, FAO, NPS, NRCAN, GeoBase, IGN, Kadaster NL, Ordnance Survey, Esri Japan, METI, Esri China (Hong Kong), swisstopo, and the GIS User Community

Targeted Threat Reduction: Prevention

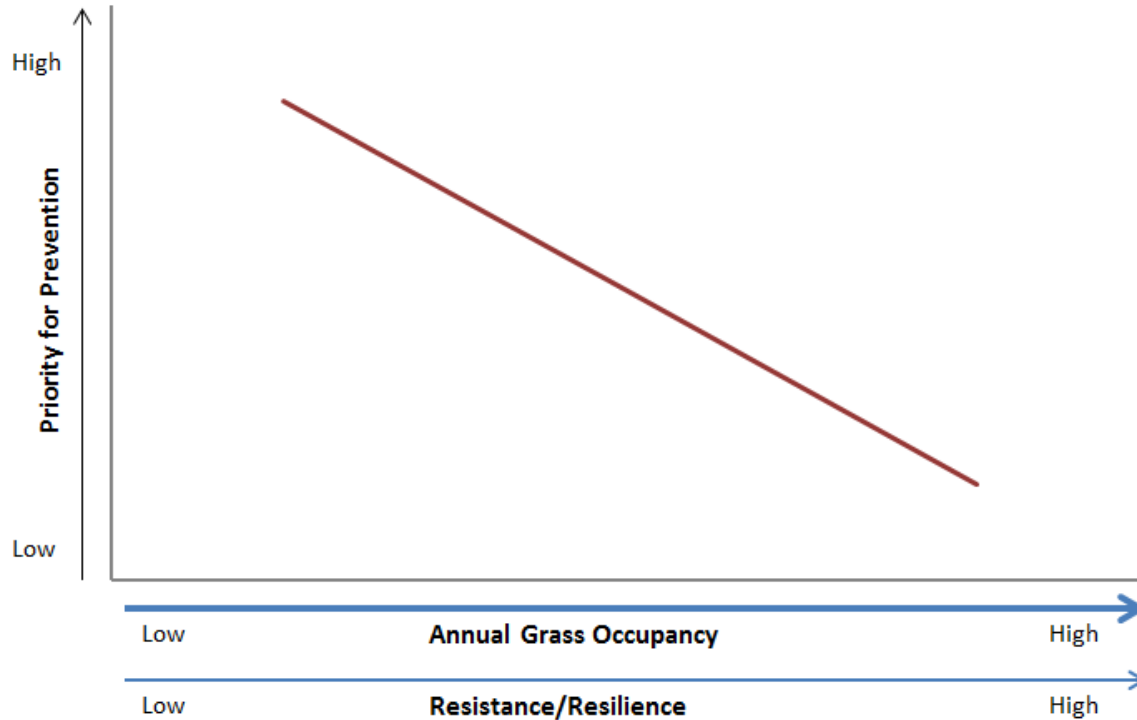
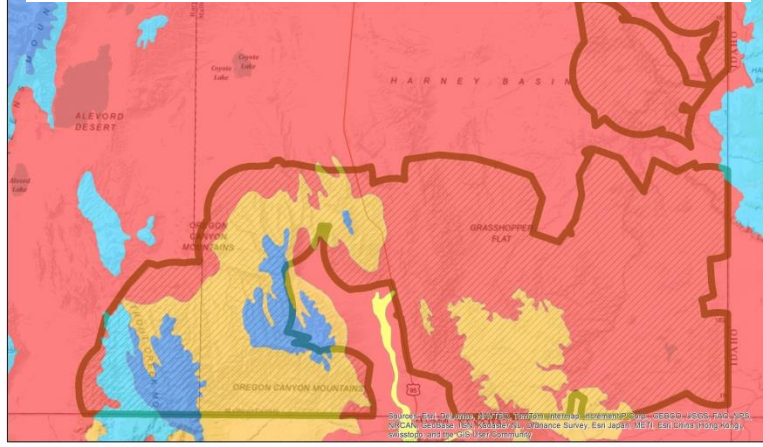


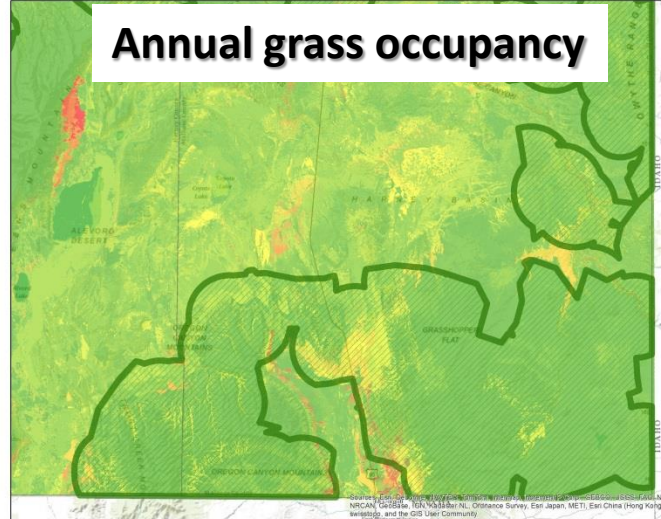
Figure 8. Using annual grass occupancy and site resistance and resilience to prioritize areas for preventing the spread of annual grasses. The bold blue arrow indicates that annual grass occupancy should be considered first, followed by resistance/resilience.

Targeted Threat Reduction: Prevention

WAFWA Resistance & Resilience mapping



Annual grass occupancy



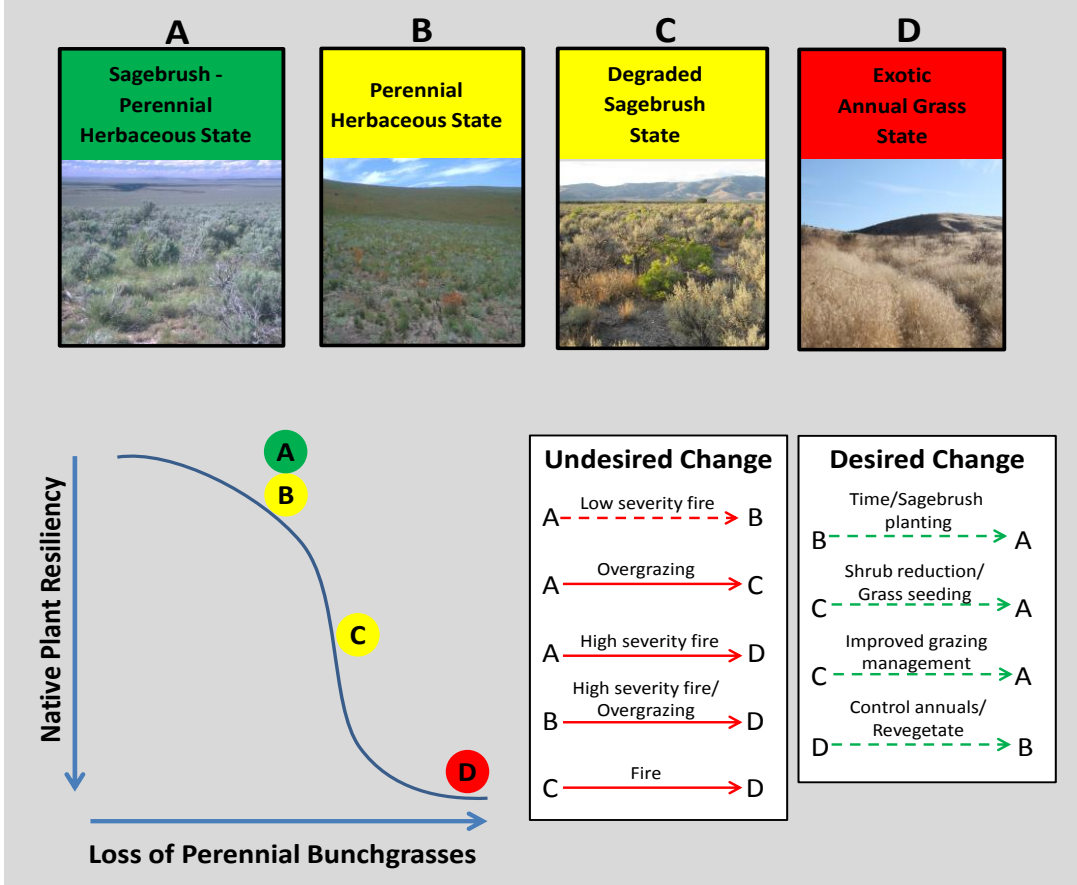
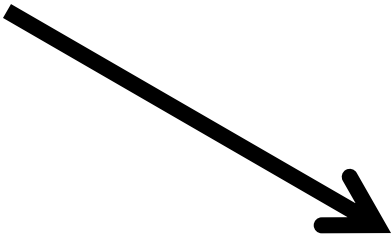
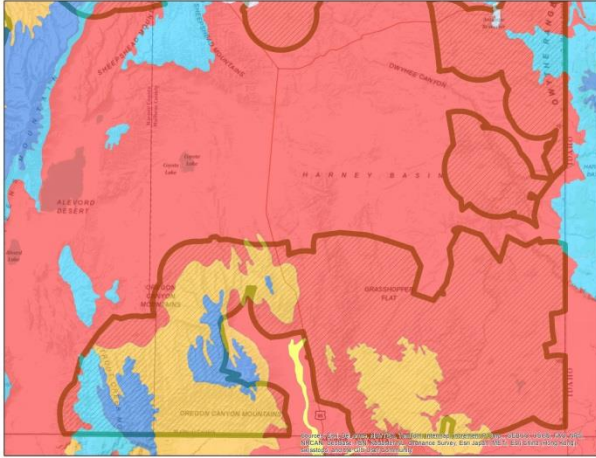
Sources: Esri, DeLorme, NAVTEQ, TomTom, Intermap, increment P Corp., GEBCO, USGS, FAO, NPS, NRCAN, GeoBase, IGN, Kadaster NL, Ordnance Survey, Esri Japan, METI, Esri China (Hong Kong), swisstopo, and the GIS User Community

Targeted Threat Reduction: Restoration



Figure 9. Using site resistance and resilience and annual grass occupancy to prioritize areas for restoration. The bold blue arrow indicates that site resistance/resilience should be considered first, followed by annual grass occupancy.

Determining Appropriate Management Actions



Chp 5 Hierarchy: Fire (draft)

1. Biological Prioritization

- Core > low density > occupied > non-habitat/non-range

2. Targeted Threat Reduction

- Current status
 - Annual grass and Risk & Resilience data
 - Fire probability (within and nearby)
 - % sagebrush cover

3. Determining Appropriate Management Actions

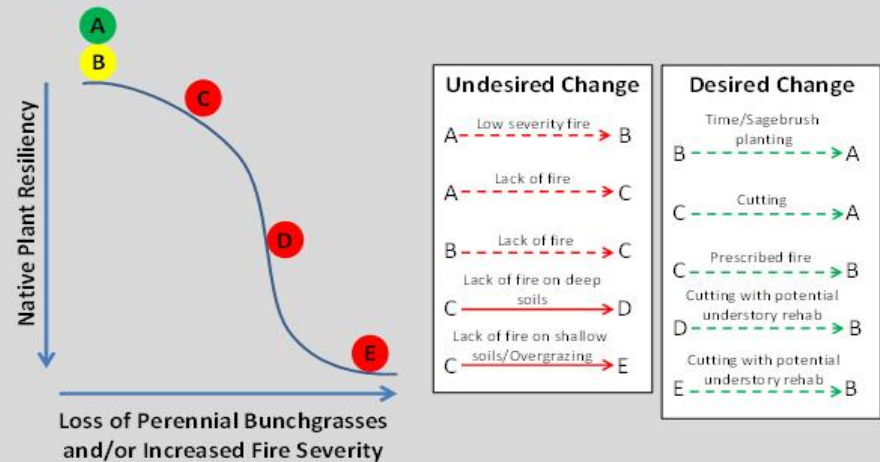
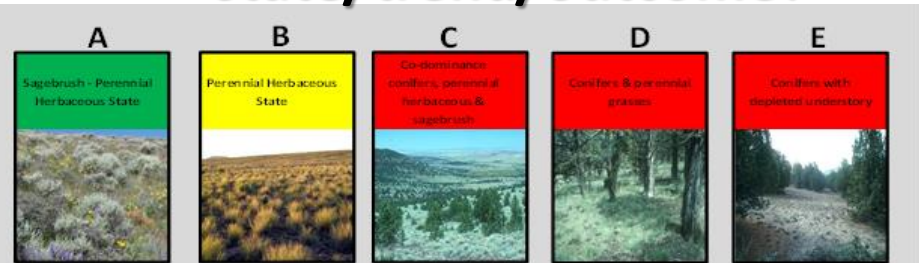
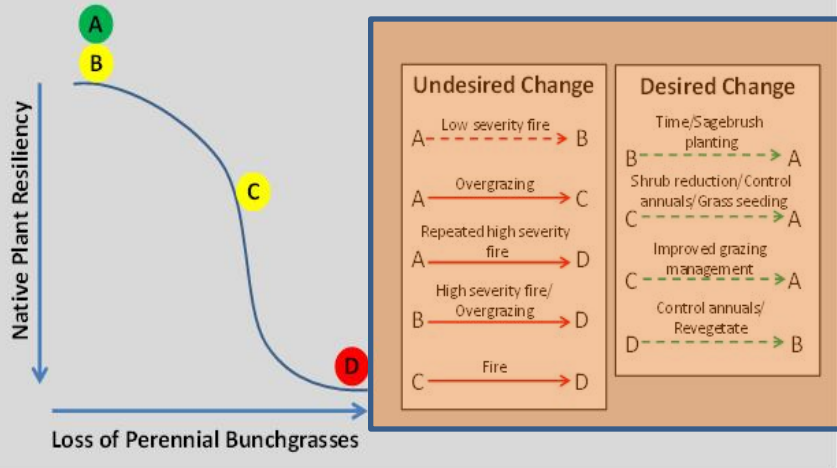
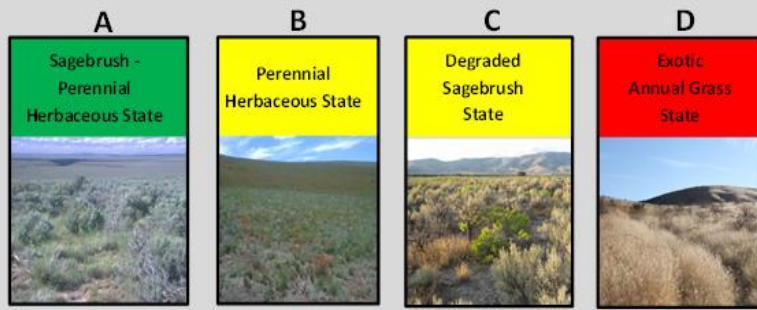
- Use STM guidance framework

Sage-SHARE

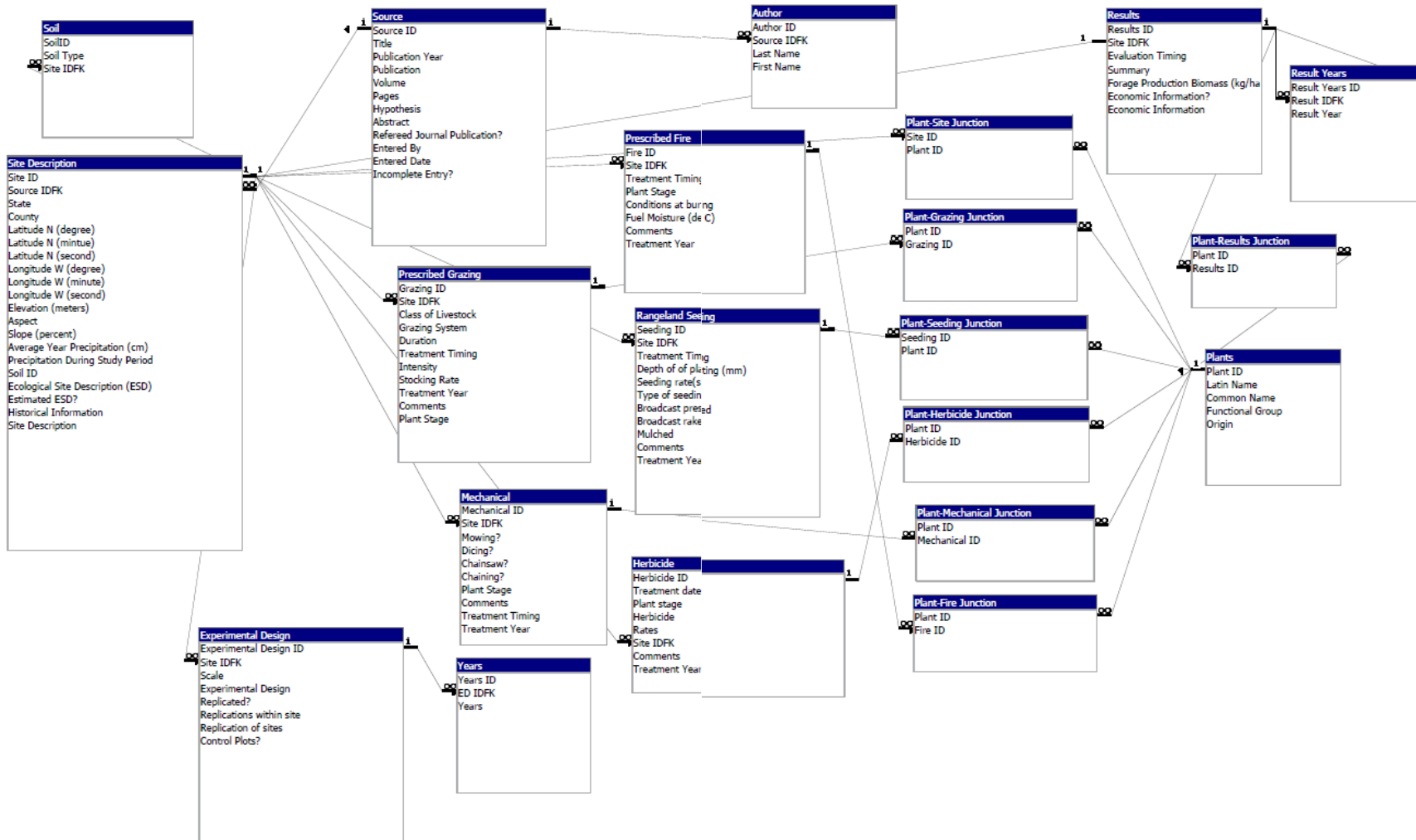
- Sage-Steppe HAbitat REsponse project
- NRCS National Conservation Innovation Grant, awarded to USDA, OSU, INR, and TNC in (Fall 2013)
- Purpose:
 - Develop a database of sage-steppe conservation practices relevant to sage-grouse
 - synthesize current literature
 - gather expert input
 - produce guidance documents and support for land managers

Conservation practices

- Likelihood of success?
- Uncertainty of outcomes?
- Time to state change?
- Duration of change?
- Indicators of state/trend/outcome?



Sage-SHARE: practices database



Sage-SHARE: Manager's guides

Low Elevation Wyoming Big Sagebrush



A	B
<p>A is dominated by big sagebrush, large perennial bunchgrasses and perennial forbs.</p>	<p>B is dominated by big sagebrush, large perennial bunchgrasses and perennial forbs.</p>
<p>Sagebrush Cover: > 10%</p>	<p>Sagebrush Cover: > 10%</p>
<p>Bunchgrass species: Bluebunch wheatgrass Idaho fescue</p>	<p>Bunchgrass species: Bluebunch wheatgrass Idaho fescue</p>
<p>Bunchgrass density: X-X plants/ 10 sq ft.</p>	<p>Bunchgrass density: X-X plants/ 10 sq ft.</p>
<p>Standing grass yield: XX lbs/ acre</p>	<p>Standing grass yield: XX lbs/ acre</p>
<p>Grazing practice:</p>	<p>Grazing practice:</p>
<p>Soils/ Soil condition:</p>	<p>Soils/ Soil condition:</p>
<p>Invasive plants: None</p>	<p>Invasive plants: None</p>
<p>Threats to sage grouse: Wildfire, non-managed grazing, invasive annual grasses</p>	<p>Threats to sage grouse: Wildfire, non-managed grazing, invasive annual grasses</p>
<p>Fire cycle :</p>	<p>Fire cycle :</p>