




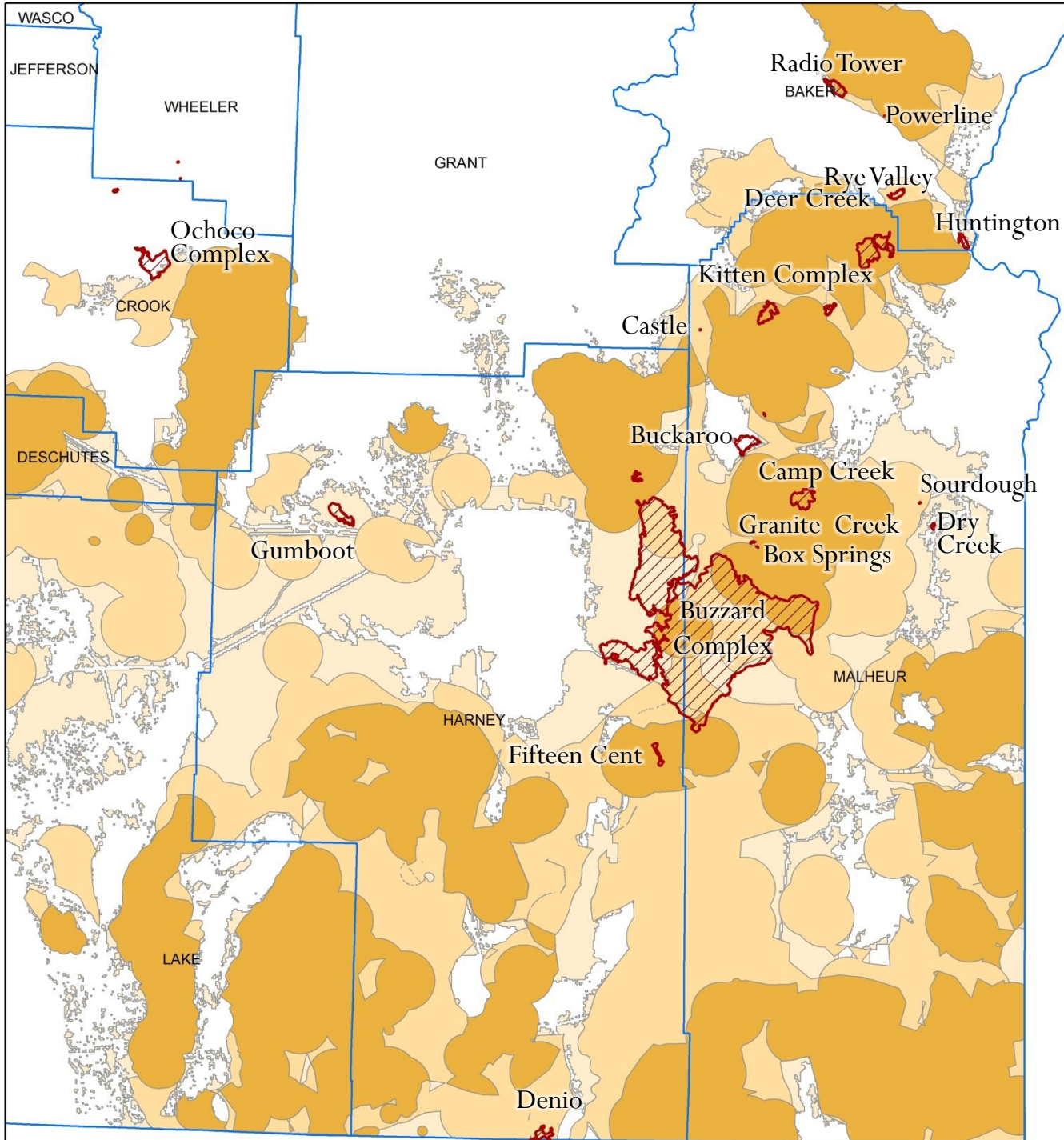


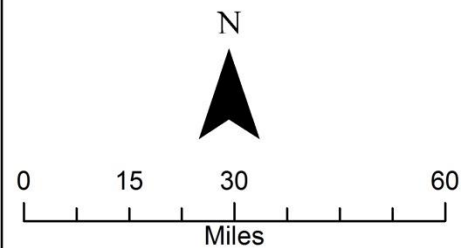
2014 Fires Sage Grouse Habitat

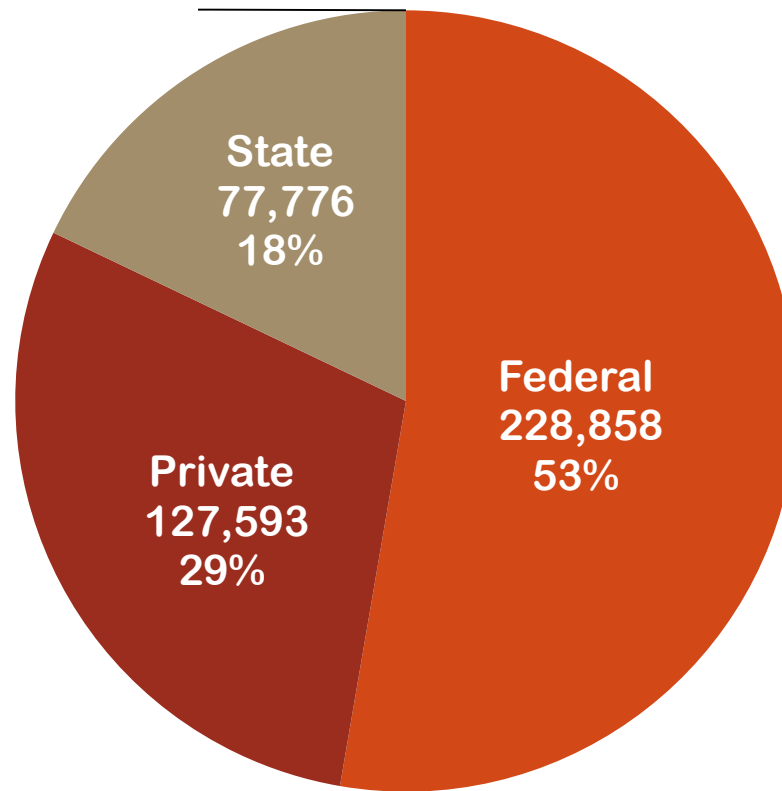
Fire perimeter data
downloaded 8/19/2014

-  Fire perimeter
-  County
-  Core Area
-  Low Density
-  COH2006



18 Fires	Acres
Core	148,442
Low Dens	176,342
COH	109,442
Total	434,227

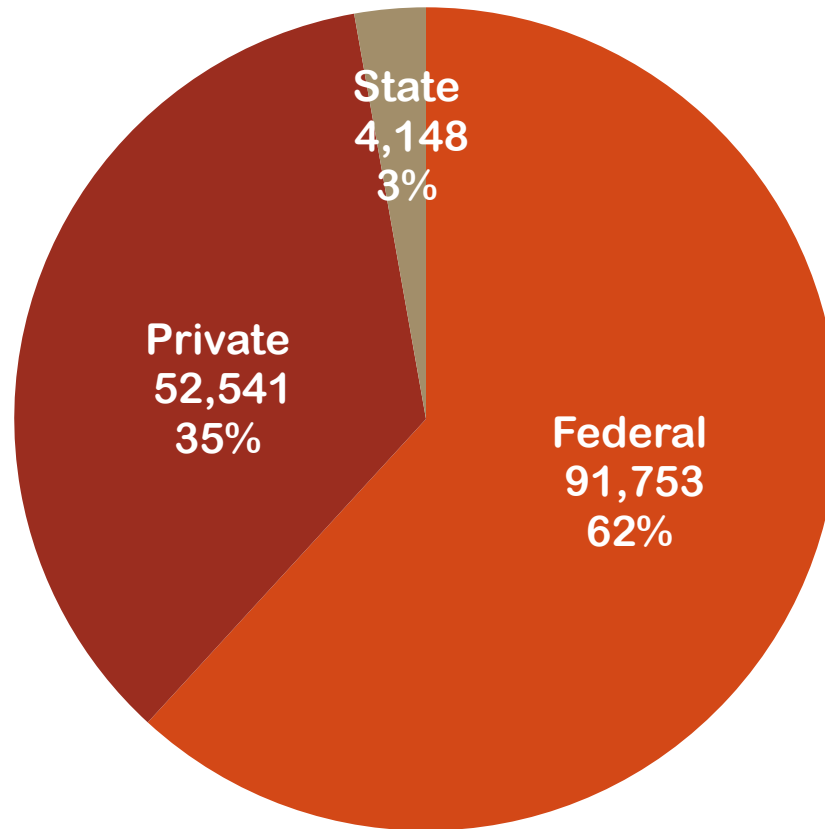




Ownership of **sage grouse habitat** impacted by fires

All habitat categories combined, total acres = 434,227

(Acres & Percent)



Ownership of **core habitat** impacted by fires

Total acres core = 148,442

(Acres & Percent)



Buzzard Complex



Buzzard Complex



Buzzard Complex



Buzzard Complex

Beaver Tables (southeast of Crane)



Buzzard Complex

Northwest of Swamp Creek



Buzzard Complex

Stockades (DSL portion)

Acres of fire-impacted GSG habitat

Complex Name	Fire Total	Core	Low Density	COH2006	Total Sage Grouse
Box Springs	13	13			13
Buckaroo	24	0.001			0.001
Buzzard Complex	395,349	122,511	168,434	104,153	395,098
Camp Creek	9,351	6,269			6,269
Castle	8		8		8
Deer Creek	0.1		0.1		0.1
Denio Basin	2,427		2,380	35	2,415
Dry Creek	238			3	3
Fifteen Cent	1,134	1,134			1,134
Granite Creek	69	8	62		70
Gumboot	4,420			4,420	4,420
Huntington	1,311			75	75
Kitten Complex	22,701	16,738	1,129	17	17,884
Ochoco Complex	10,011		255	608	864
Powerline	5	5			5
Radio Tower	3,359	1,764	1,104	131	3,000
Rye Valley	2,956		2,956		2,956
Sourdough	13		13		13
Grand Total	453,389	148,442	176,342	109,442	434,227