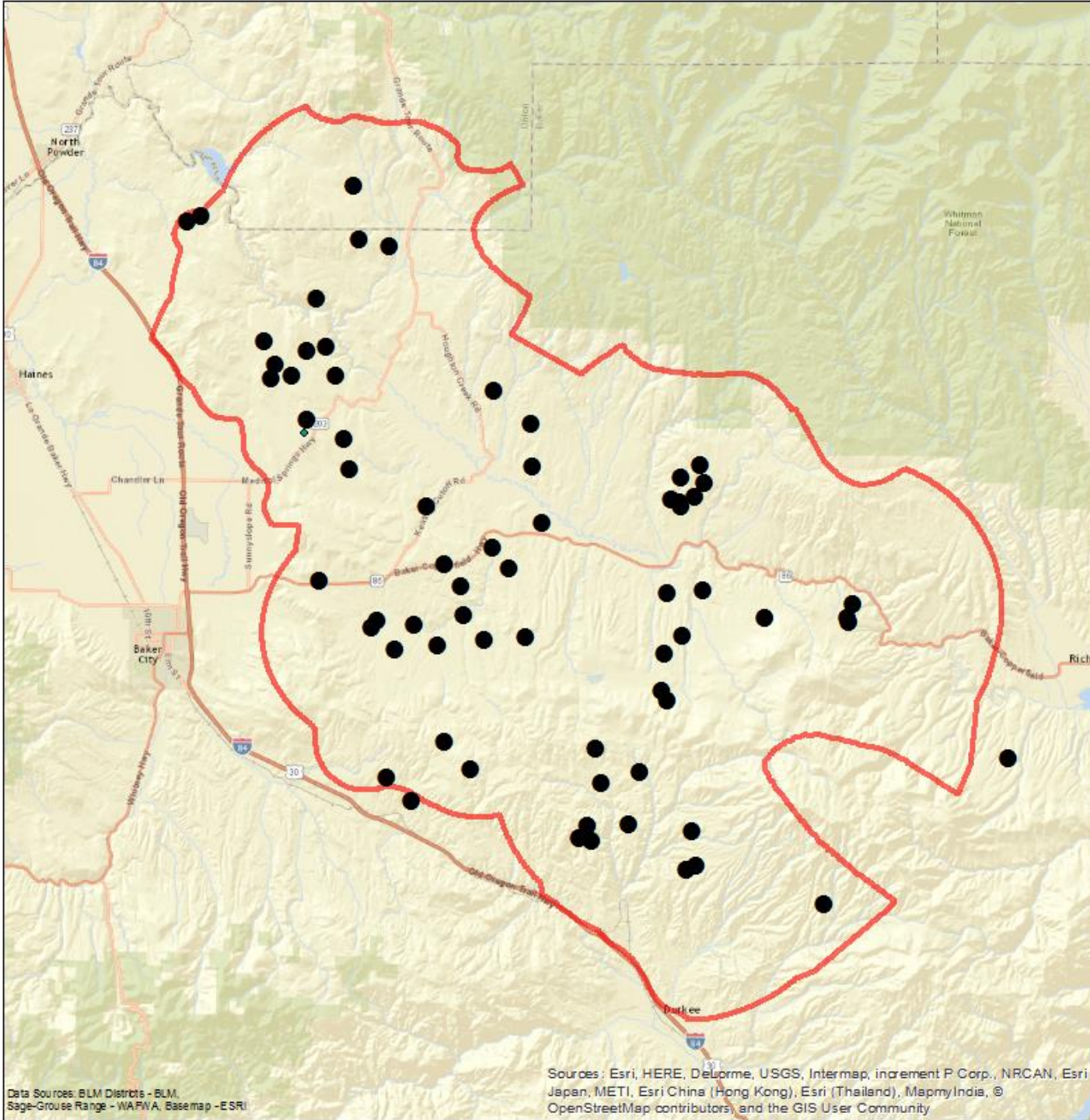


Baker LIT

Nick Myatt - ODFW District Manager

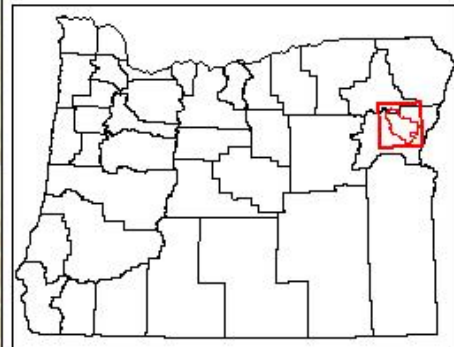
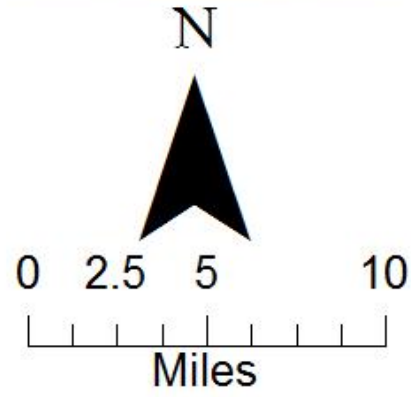
9/30/2016 Sage Con





Baker Priority Area of Conservation

- Sage-Grouse Leks
- ▭ PAC Boundary



Data Sources: BLM Districts - BLM, Sage-Grouse Range - WAPWA, Basemap - ESRI

Sources: Esri, HERE, DeLorme, USGS, Intermap, increment P Corp., NRCAN, Esri Japan, METI, Esri China (Hong Kong), Esri (Thailand), MapmyIndia, © OpenStreetMap contributors, and the GIS User Community

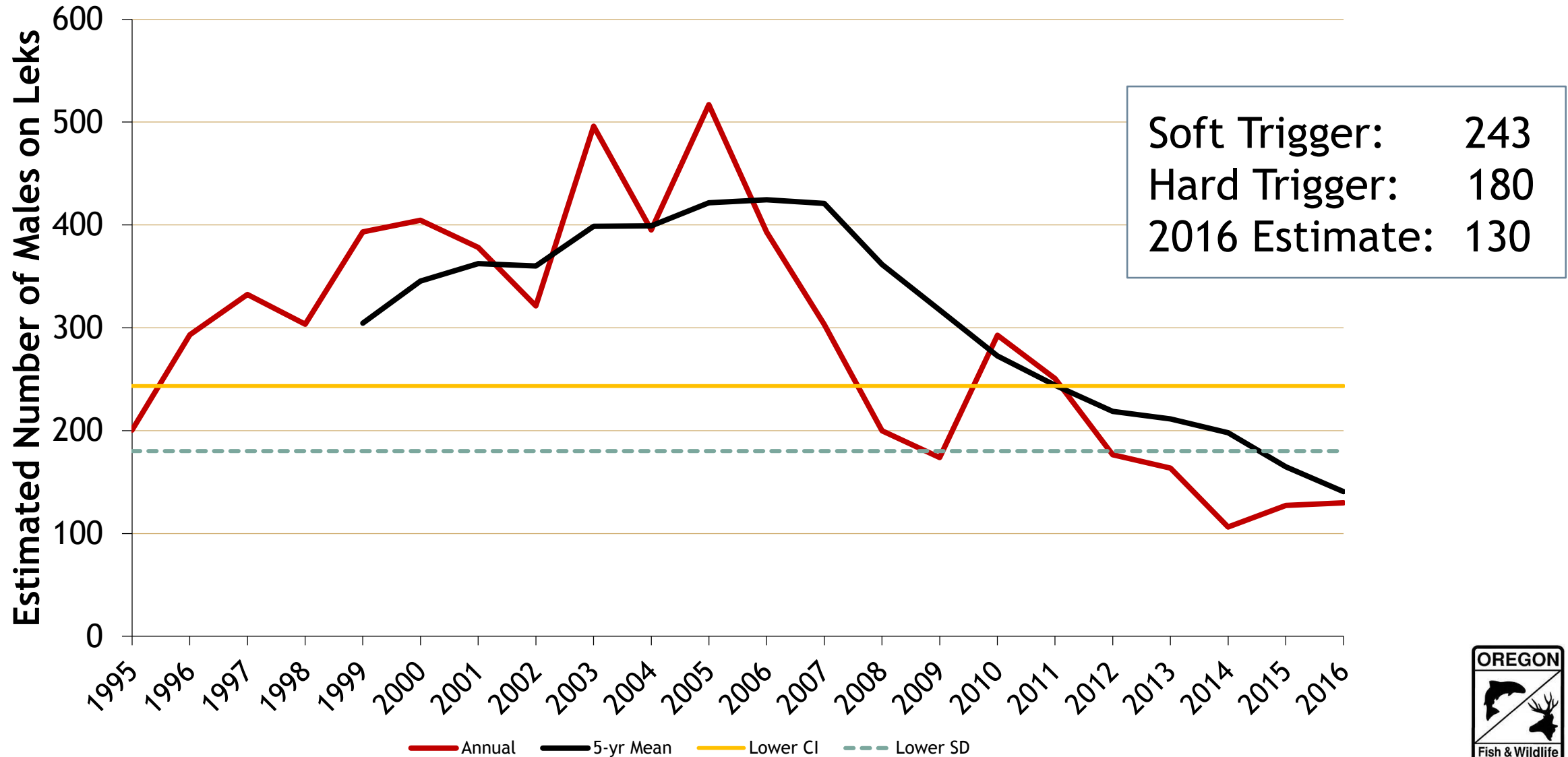




Troubled Population

- Small size
- Isolated
- High fragmentation
- Legacy effects
- ~~Juniper~~
- ~~Loss from fire~~

Baker PAC Population Minimum Males



Baker LIT 2.0

- OR Department of Fish and Wildlife
- U.S. Fish and Wildlife
- Bureau of Land Management
- Private Landowners
 - Rex Nelson
 - Wannie Mackenzie
- Baker County (Commission and Planning)
- Union County (Planning)
- Tri-County Weed Cooperative
- Soil and Water Conservation Districts
- OSU Extension
- OR Department of Agriculture
- Senator Wyden's Office
- As needed:
 - OR Department of Forestry
 - Rural Fire Protection Associations
 - Wildlife Services
 - U.S. Forest Service
- NGOs?



Baker LIT 2.0



Three LIT Meetings

- Kick off meeting
- Predation impacts on sage-grouse
- Hard trigger/causal factor analysis

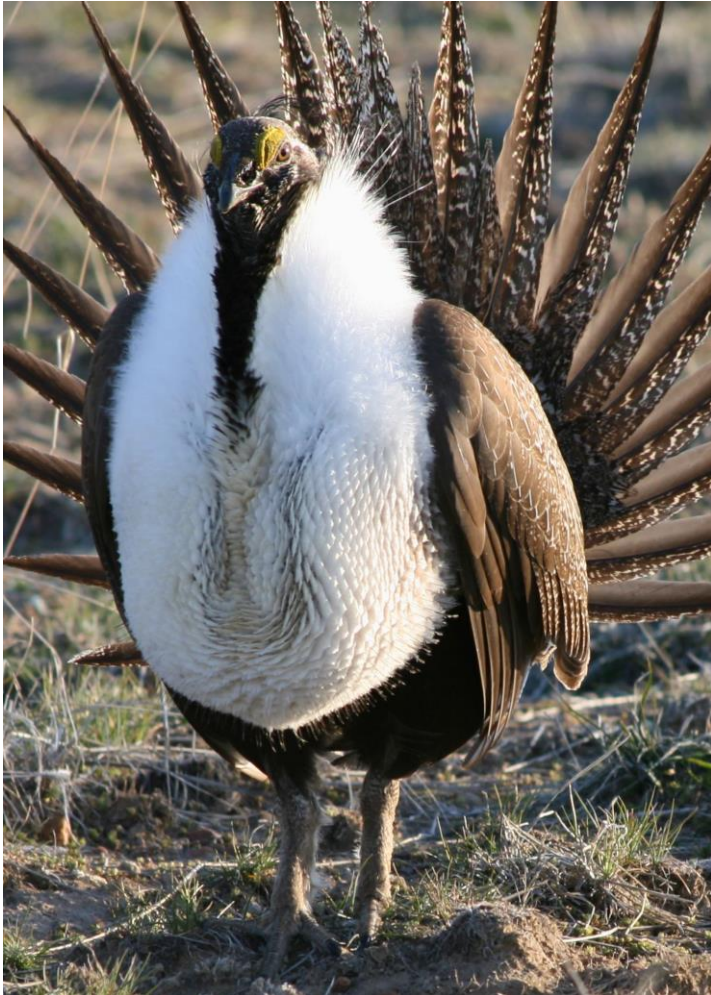
Partner Update



OR Fish and Wildlife

- Leading LIT meetings
- Conducting raven density surveys
- Developing Integrated Predation Management Plan
 - Reduce raven subsidies
 - Reduce raven populations
- Work with LIT on Strategic Plan

Partner Update



U.S. Fish and Wildlife

- Assisting with lek counts and raven surveys
- Support on raven scientific take permit process
- Train and assist SWCD staff with development of CCAA Site Specific Plans
- Strategic planning for conservation measures
- Causal Factor Analysis Team

Partner Update



Bureau of Land Management

- Juniper removal
 - 16,675 acres of priority habitat
 - 6,243 acres of general habitat
- Livestock management changes 43,444 acres
 - Min riparian stubble heights and fencing
 - Change season of use
 - Water developments
 - Reduced AUM

Partner Update



NRCS

- Kickin' butt!
- Keating Invasive Annual Grass Control
 - 2016 - \$483,392 - 1,226 acres
 - 2017 - \$300,000 - 3,500 acre goal
 - 2018 - \$400,000 - 4,500 acre goal
 - 2019 - \$200,000 - 2,500 acre goal

Partner Update



Soil and Water Conservation Districts

- 5 landowners enrolled with CCAAs
 - 30,207 acres
- 20 additional letters of intent
 - 108,000 acres
 - Plans completed within 24 months

Partner Update

Saved the Most
Important For Last!





LIT Lessons Learned

- All inclusive is better
- 3 meetings per year is not enough
- Time of partners is limiting and scheduling in advance important
- Landowner participation key to success and challenging
- Dedicated facilitator is important
- Technical and local leadership level is helpful
- Still evolving

