

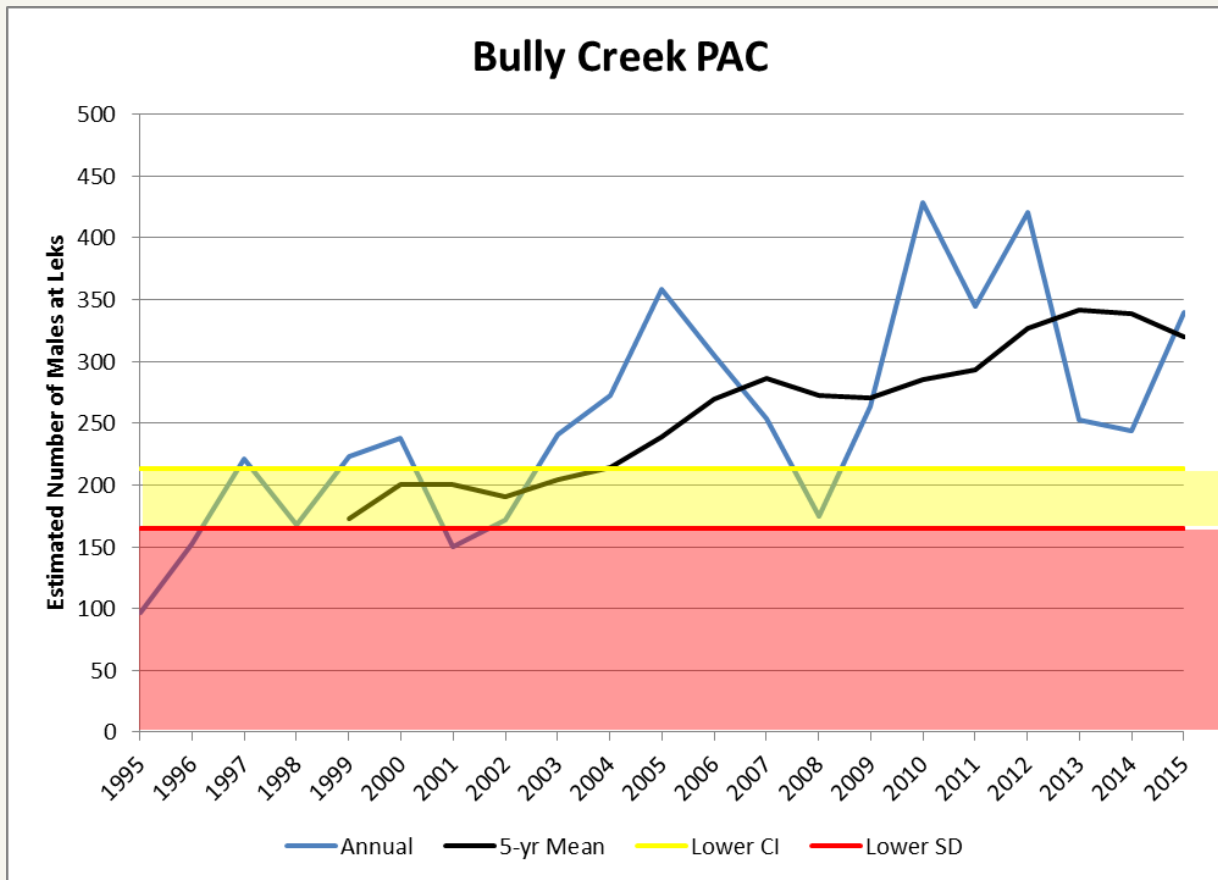
# Status of Greater Sage-Grouse on Oregon BLM Lands

Glenn Frederick, OR/WA Sage-Grouse Coordinator  
Bureau of Land Management



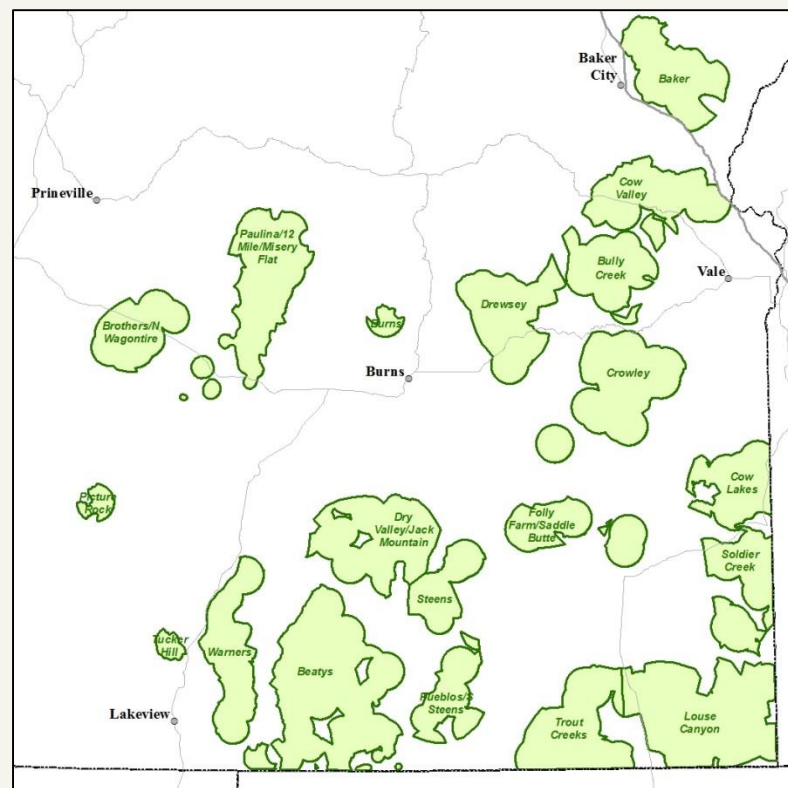
# PAC Scale Population Thresholds

- Thresholds based on variation of annual population estimate (blue line)
- Status determined annually based on 5-year running mean (black line)
- Yellow Zone is intermediate concern
- Red Zone is high concern



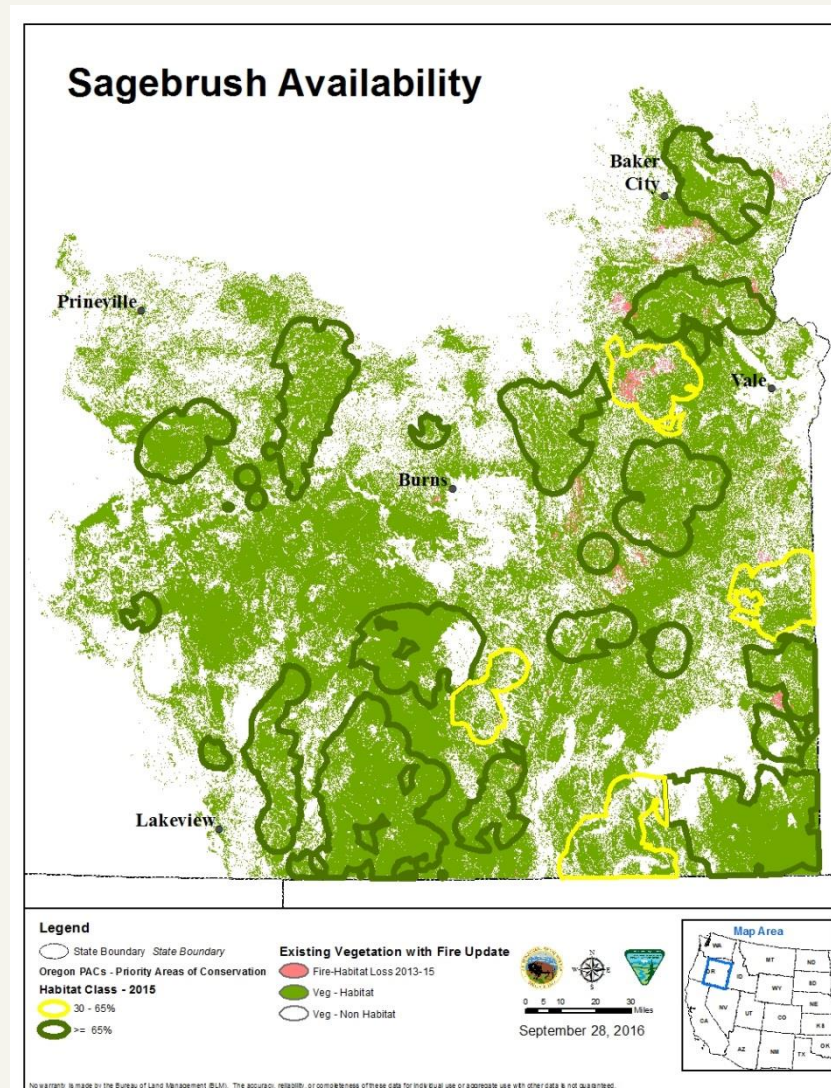
# PAC Scale Population Status

PAC Name	5-year		
	Running Mean	Yellow Threshold	Red Threshold
12-Mile	318	333	285
Baker	165	243	180
Beatys	922	862	528
Brothers/N. Wagontire	156	143	125
Bully Creek	320	213	165
Burns	NA	NA	60% drop
Cow Lakes	226	266	202
Cow Valley	213	226	179
Crowley	292	195	139
Drewsey	175	122	92
Dry Valley-Jack Mountain	179	195	150
Folly Farm-Saddle Butte	84	58	23
Louse Canyon	NA	NA	60% drop
Picture Rock	25	27	21
Pueblos-South Steens	92	107	13
Soldier Creek	219	198	147
Steens	169	130	85
Trout Creeks	NA	NA	60% drop
Tucker Hill	52	45	38
Warners	422	210	119



# PAC Scale Habitat Thresholds

- Sage-grouse require landscapes supporting sagebrush cover
- Wildfire and juniper expansion are primary factors affecting landscape sagebrush cover
- Sagebrush habitat thresholds
  - $\geq 65\%$  (green): populations persist
  - 30-65% (yellow): provides habitat but at risk if sagebrush loss occurs without recovery
  - $< 30\%$  (red): unlikely to provide adequate habitat for sage-grouse
- 2016 fires (not shown) removed 19,958 acres of habitat in PHMA



# Summary

- In 2015, 7 PACs were below a population threshold
  - 4 showed signs of recovery (flat or upward trend)
  - 2 (Dry Valley-Jack Mtn. and Picture Rock) continued a downward trend
  - 1 (Baker) dropped below the lower threshold without sign of recovery
- Sagebrush availability in 2015 was above the habitat threshold (>65% landscape cover) except in 3 PACs due to wildfires

