



**Engaging Oregonians
in Improving Our
Communities**

Oregon's Kitchen Table (OKT), a program of the National Policy Consensus Center at Portland State University, is a space for Oregonians from every corner of the state to contribute feedback, ideas, and resources to decision-makers, public projects, and initiatives.

www.oregonskitchentable.org





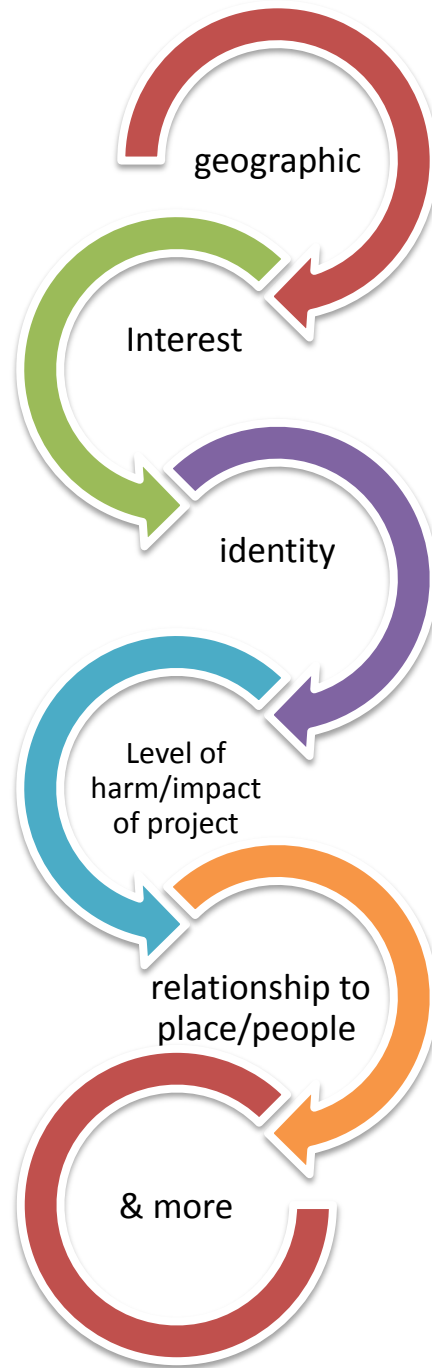
Oregon's Kitchen Table is committed to engaging a broad range of community members in public decisions.

- Using culturally specific, place-appropriate, and targeted outreach, Oregon's Kitchen Table has a particular focus on hearing from Oregonians who have been left out of traditional engagement processes.
- We work with organizers, translators, and interpreters to make sure that people can participate in ways that work for them.
- We recognize that people bring all different levels of knowledge and familiarity regarding issues / policies. We use approaches to ensure those who may not have as in-depth knowledge can still respond and share what they believe and have experienced.



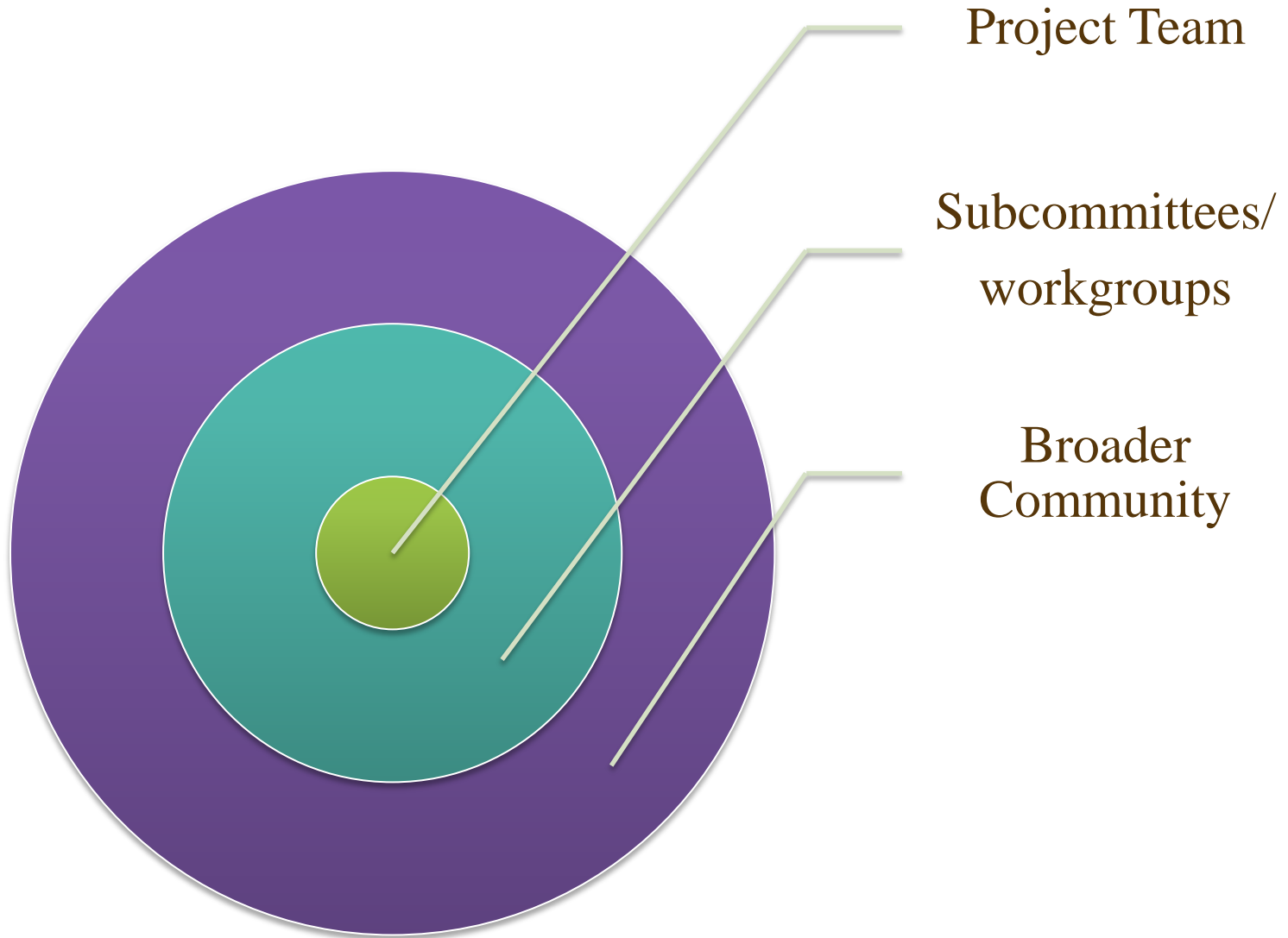


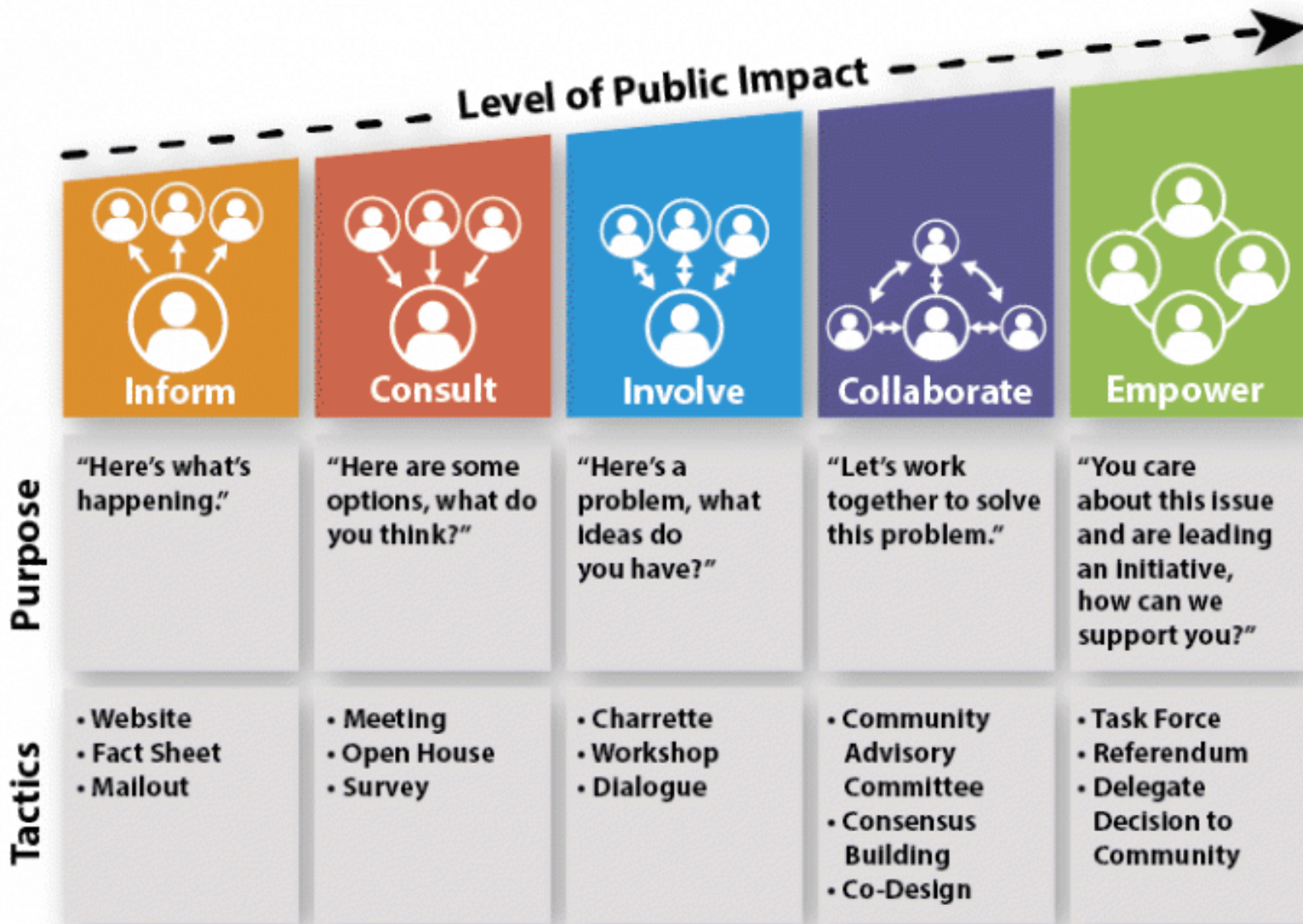
Types of Representativeness





Representativeness in an Oregon Solutions Process

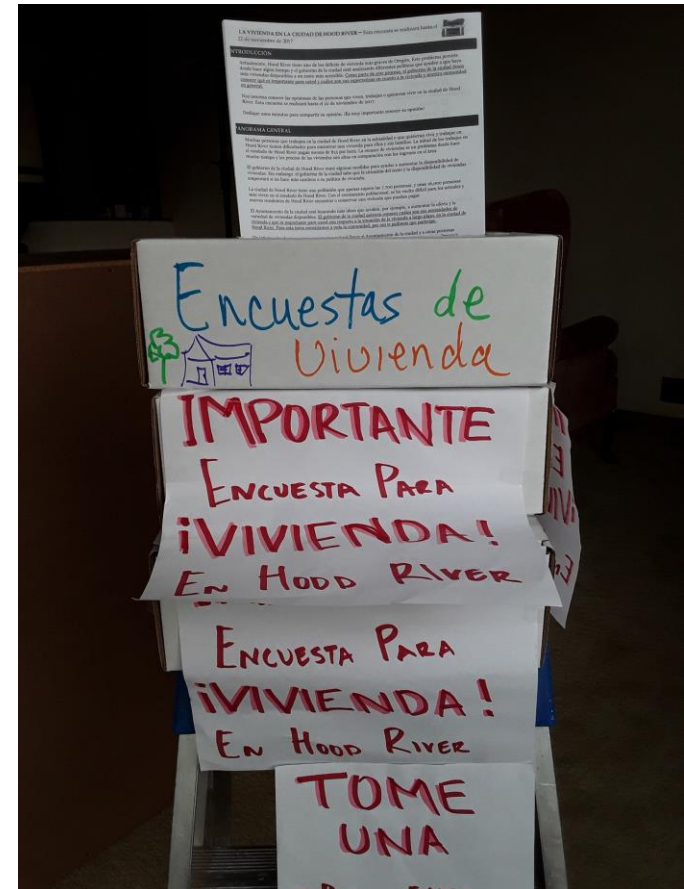




Adapted from the IAP2 spectrum of public participation

POTENTIAL ELEMENTS OF ENGAGEMENT

- Newsletters/updates
- Individual / small group interviews
- Tabling at events
- Online and/or paper survey
- Community-of-interest conversations (by community/milepost/interests/etc.)
- Facebook or Instagram live
- Workshops (in person or virtual)
- Other . . .



Example: Gilliam County Housing

