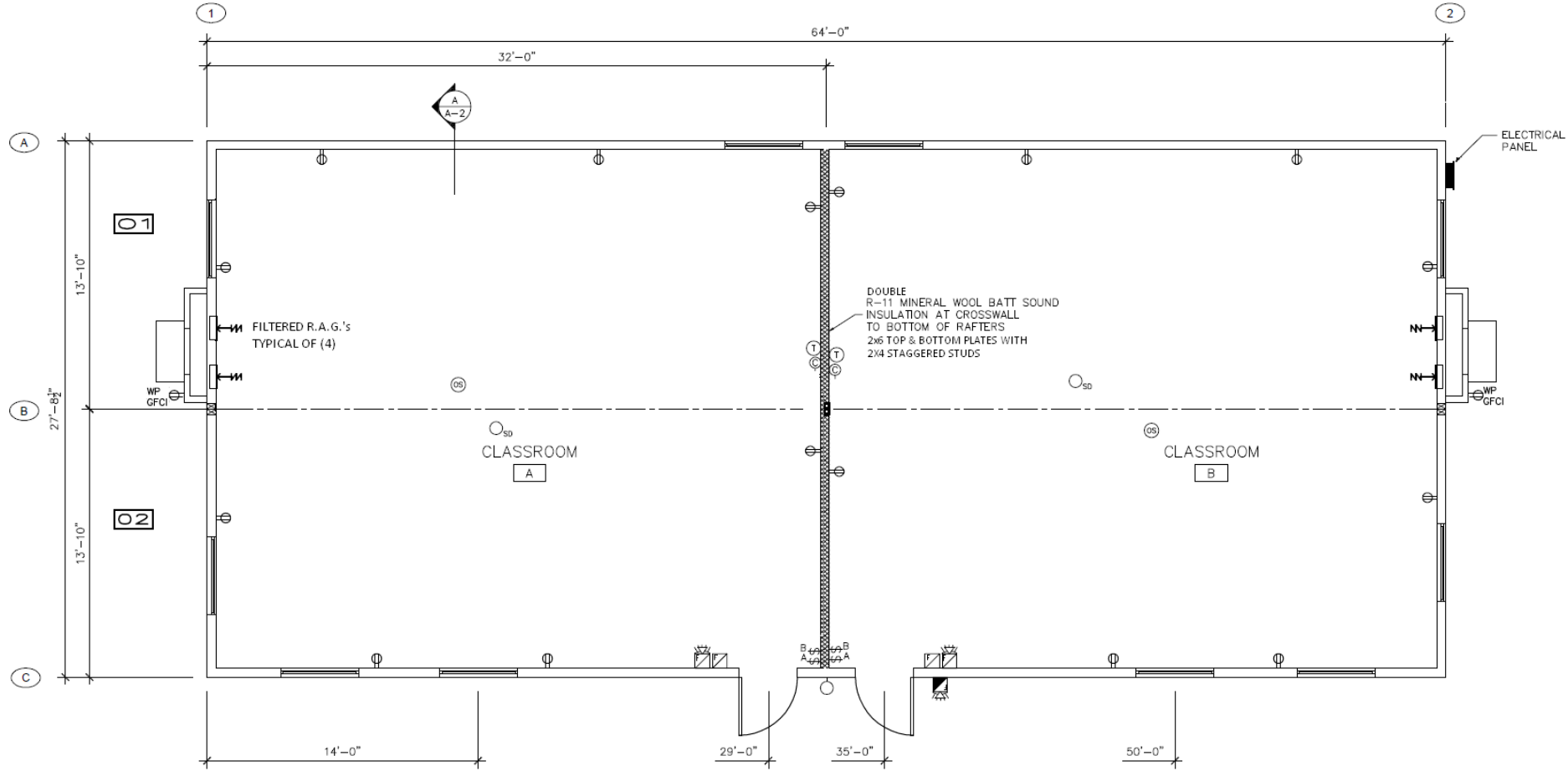




PL  
DP



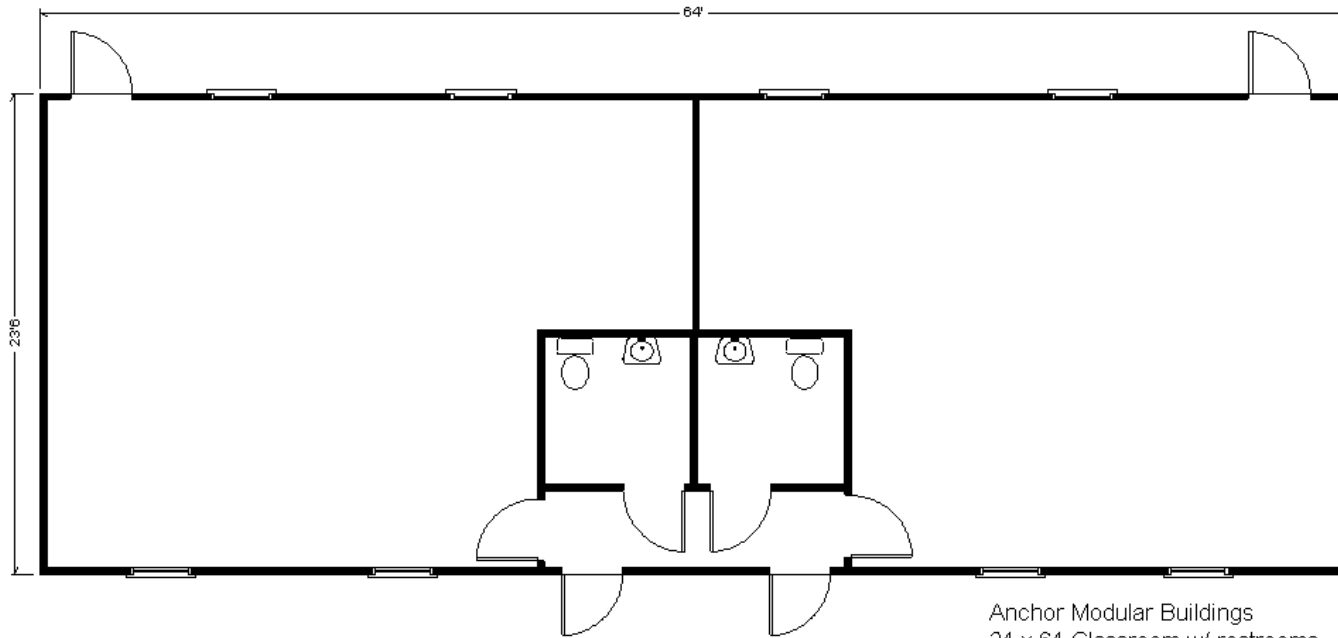












Anchor Modular Buildings  
24 x 64 Classroom w/ restrooms





Week-Parent Calendar

Thursday	Friday	Saturday	Sunday

Village Drop Room

Name	Room	Drop



# Million Dollar Solutions



# Existing Efficiencies



# Managing Storm Water



# Increasing Portability



# Foundation Options

	1st Installation	demo	2nd Installation	demo	3rd Installation	TOTALS
<b>Option 1</b> Strip footing w/ 36" high stem wall and wood floor system	\$33,603.44	\$5,743.01	\$29,033.44	\$5,743.01	\$29,033.44	<b>\$103,156.34</b>
<b>Option 2</b> Slab on grade w/ strip footing and 12" high stem wall	\$28,468.07	\$14,515.03	\$28,468.07	\$14,515.03	\$28,468.07	<b>\$114,434.26</b>
<b>Option 3</b> Slab on grade w/ thickened perimeter	\$18,664.65	\$10,272.02	\$18,664.65	\$10,272.02	\$18,664.65	<b>\$76,537.99</b>
<b>Option 4</b> Spread Footings with Concrete Piers and steel floor system	\$29,123.00	\$10,272.02	\$14,553.00	\$10,272.02	\$14,553.00	<b>\$78,773.04</b>
<b>Option 5</b> Helical Piers with Steel Floor system and skirt	\$35,680.52	\$1,500.00	\$7,110.52	\$1,500.00	\$7,110.52	<b>\$52,901.56</b>

# Reduce the Ramp





# Orientation Strategies



# Proper Orientation



# Whole Building Approach



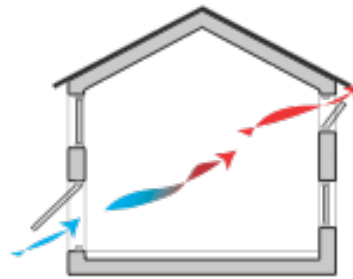
**Tight  
Envelope**

+



**Kick Start  
Heating**

+



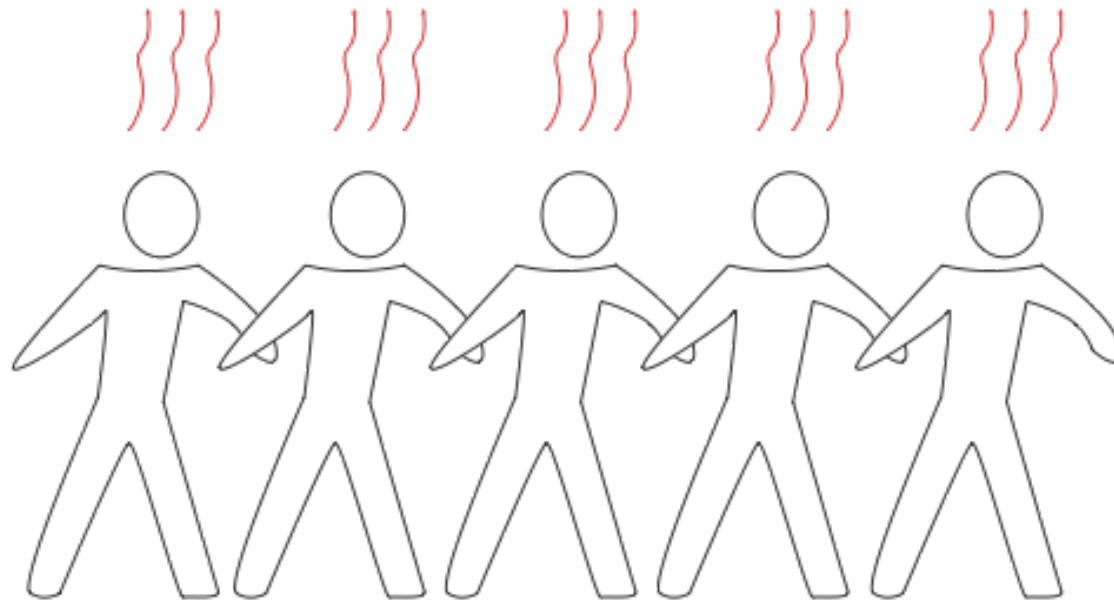
**Natural  
Ventilation**

+

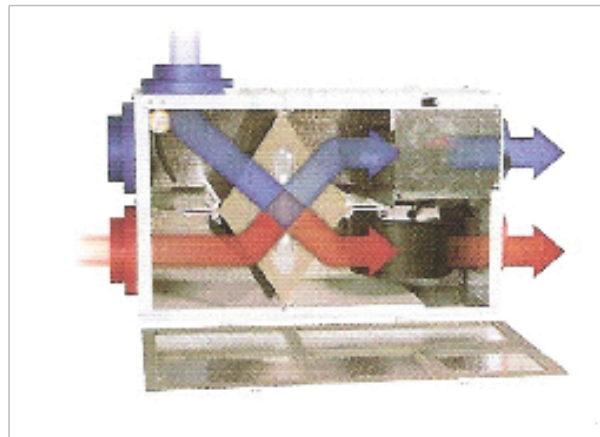
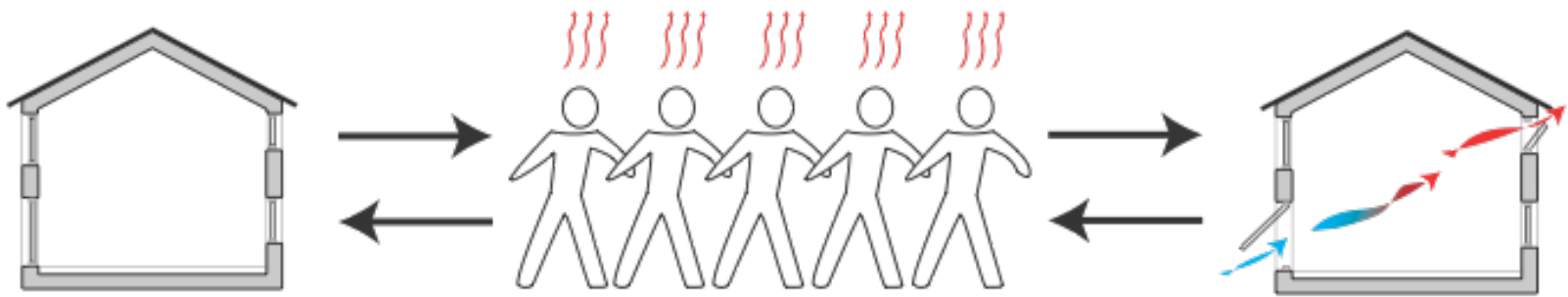


**Student  
Thermal  
Resource**

# It's all about Body Heat



# Thermal Balance

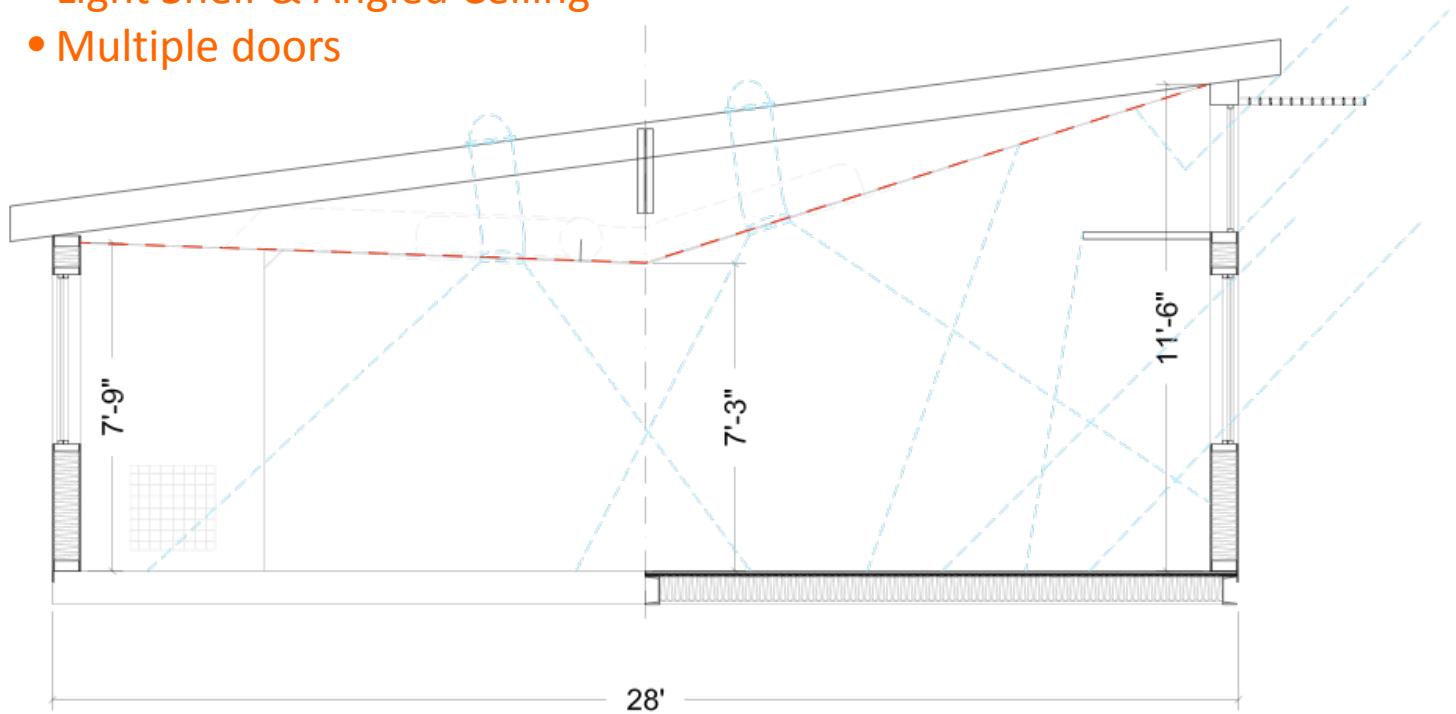


# The Shed

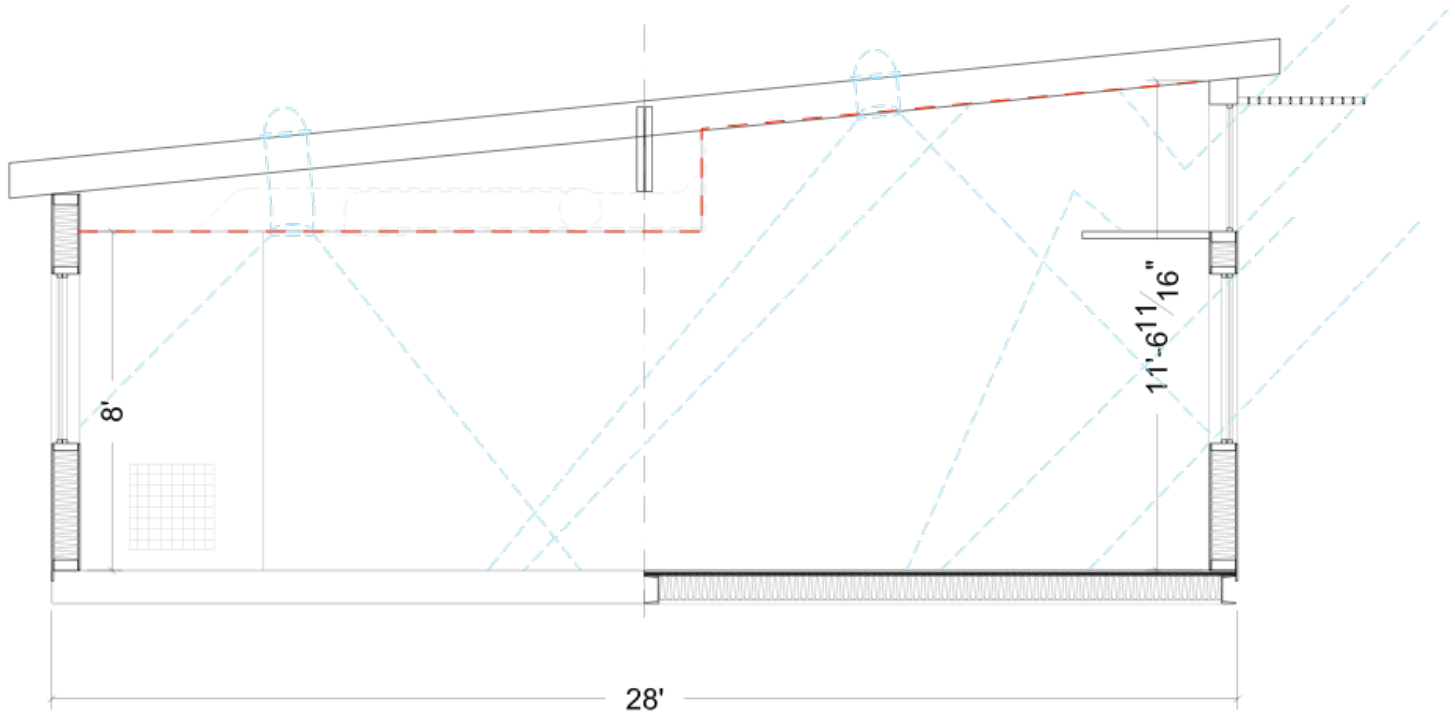


# A

- One clearstory oriented South or West
- Light Shelf & Angled Ceiling
- Multiple doors

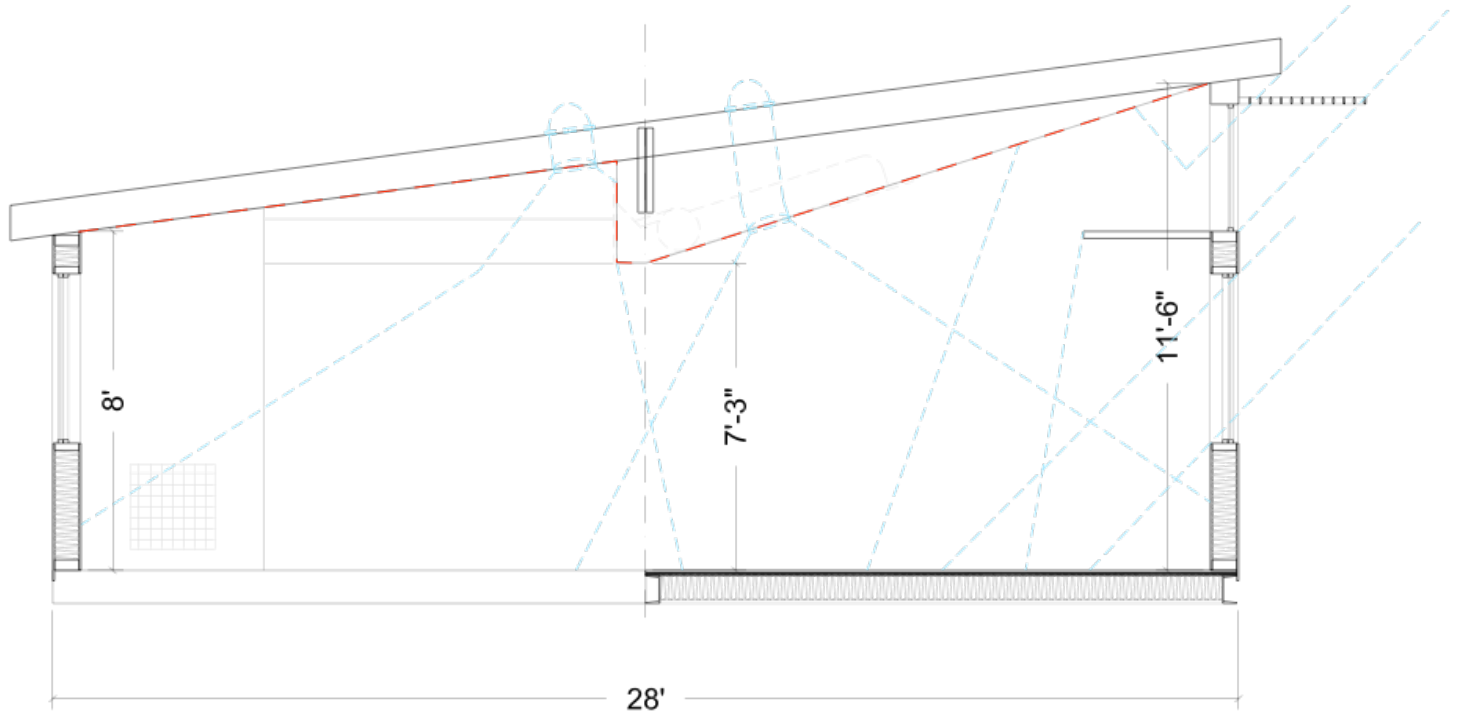


**B**





C

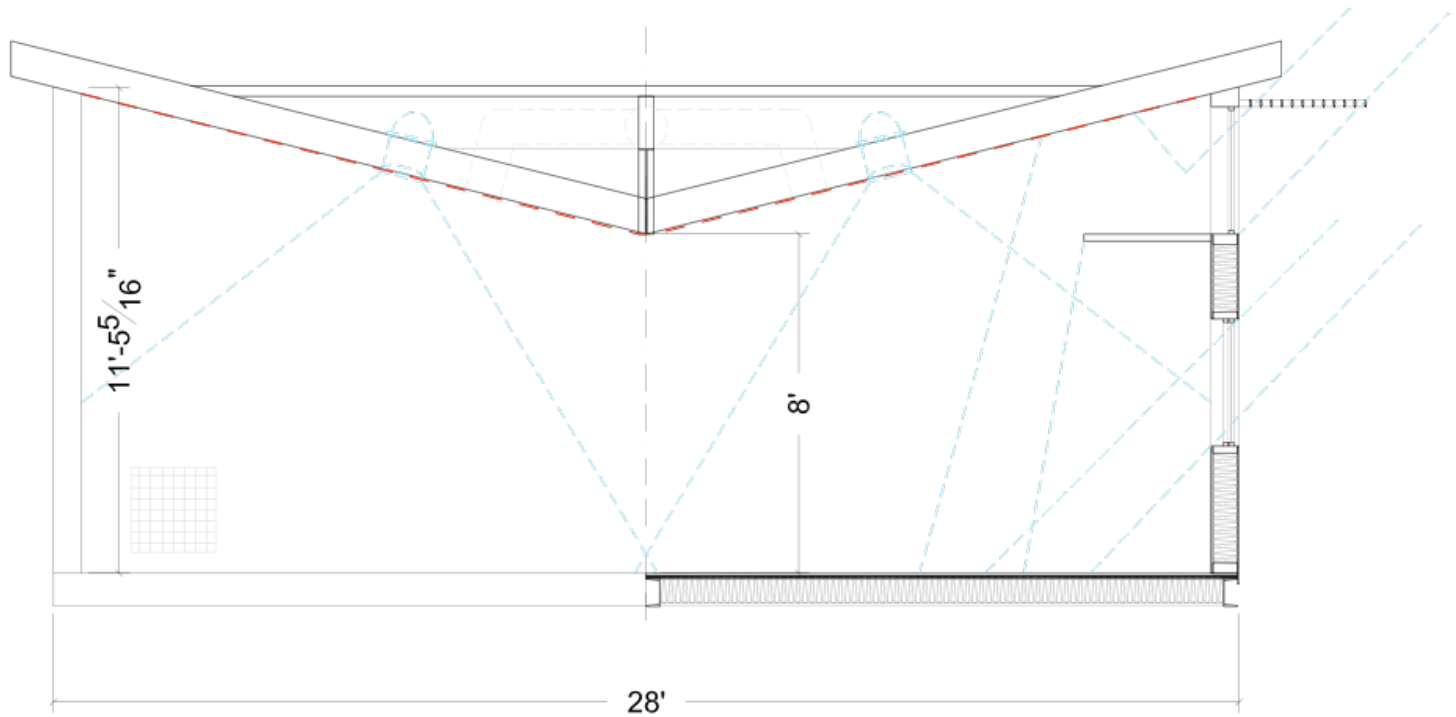




# The Butterfly



- Double Clearstory
- Modular window treatment
- One entrance





# The Gable



- Down size the existing HVAC
- Ease of constructability

