



# BLM “Wind Energy Development Challenges and Opportunities” Mapping Effort

- NOT a decision or a policy document.
- Map is a “Complexity Index”.
- Intended as a tool for fostering collaborative solutions in planning projects on public land.

The screenshot shows the BLM website for Oregon/Washington. The main heading is "Wind Energy Development Challenges & Opportunities Map". The page includes a navigation menu with links for Home, Maps, Sagebrush Ecosystem, FAQ, BLM Involvement, and Contact. The main content area features a paragraph explaining the map's purpose: "Nationally, the BLM manages sage-grouse habitat through eight state offices in the Western U.S., and our conservation goal is to preclude the need for listing under the Endangered Species Act. In Secretarial Order No. 3285, the Secretary of the Interior has established environmentally responsible development of renewable energy as a priority for the Department of the Interior, and directed: 'Agencies and bureaus within the Department will work collaboratively with each other, and with other Federal agencies, departments, states, local communities, and private landowners to encourage the timely and responsible development of renewable energy and associated transmission while protecting and enhancing the Nation's water, wildlife, and other natural resources.'" It also includes a small image of a wind turbine and a map thumbnail. The footer contains links for USA.GOV, No Fear Act, DOI, Disclaimer, About BLM, Notices, and Get Adobe Reader.

Symposium on Renewable Energy  
& Eastern Oregon Landscape Conservation  
November 9, 2010  
Riverhouse Conference Center, Bend Oregon



# BLM “Wind Energy Development Challenges and Opportunities” Mapping Effort

- Provides insight and transparency to potential complexities and conflicts.
- Highlights areas of opportunity with less potential conflict.
- Provides both the public and energy development proponents better information in advance of siting.

The screenshot shows the BLM website for Oregon/Washington. The main heading is "Wind Energy Development Challenges & Opportunities Map". The page contains several sections:

- Introduction:** "Nationally, the BLM manages sage-grouse habitat through eight state offices in the Western U.S., and our conservation goal is to preclude the need for listing under the Endangered Species Act. In Secretarial Order No. 3285, the Secretary of the Interior has established environmentally responsible development of renewable energy as a priority for the Department of the Interior, and directed: 'Agencies and bureaus within the Department will work collaboratively with each other, and with other Federal agencies, departments, states, local communities, and private landowners to encourage the timely and responsible development of renewable energy and associated transmission while protecting and enhancing the Nation's water, wildlife, and other natural resources.'" In response, the Oregon/Washington BLM has worked collaboratively with numerous stakeholders and partners to provide the "Challenges & Opportunities" map.
- Map Description:** "The 'Challenges & Opportunities' map is not a decision document, nor a policy document. The BLM provides this map of potential wind energy development information and key regional natural resource information in eastern Oregon to foster collaborative solutions in the planning and siting of infrastructure projects on public lands. The map provides a better understanding of potential complexity within a given area. Highlighting likely areas of potential conflicts with high value natural resources early in the planning process creates transparency that benefits stakeholders. Similarly, highlighting opportunity areas with less potential conflict also benefits stakeholders. Providing the public and energy development proponents better information on the degree of complexity in addressing environmental concerns in advance of siting allows for better informed selection of potential development sites."
- Map Purpose:** "The map identifies, at a regional scale, key natural resource values and the juxtaposition of those values on the landscape. The overlap of values creates focal areas that facilitate establishing land use priorities. The regional information provided in this map does not necessarily include project specific level information, nor does it address renewable energy potential. The map is by no means comprehensive, as many other concerns such as resource management plan decisions, habitat for certain rare species, cultural resource sites and others, are best addressed at the project level. Additional project level verification, and input by local experts and the public in project planning is still crucial."
- Map:** A map of eastern Oregon showing various colored regions representing different natural resource values and potential conflicts. A legend is visible on the left side of the map.

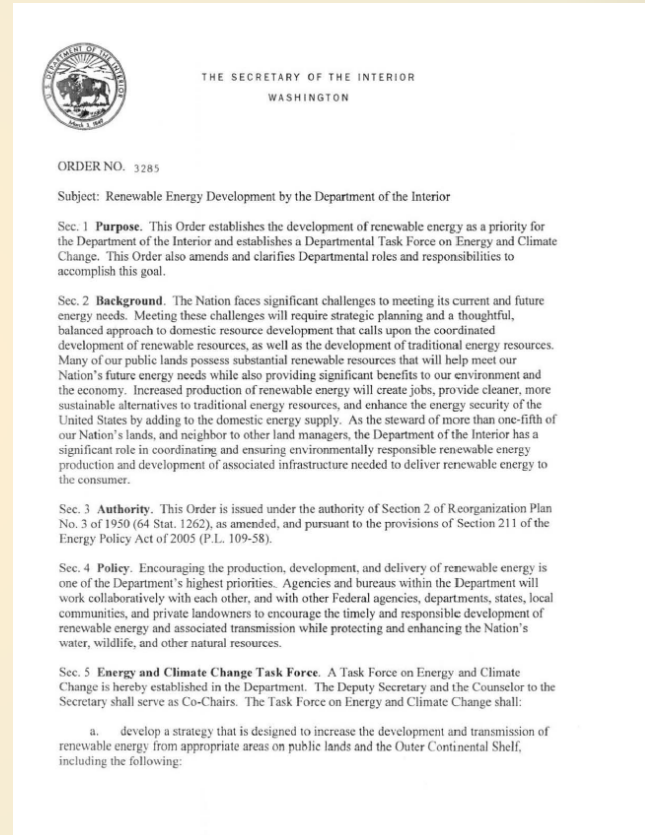
At the bottom of the page, there is a footer with links: "USA.GOV | No Fear Act | DOI | Disclaimer | About BLM | Notices | Get Adobe Reader | Privacy Policy | FOIA | Your Rights | Contact Us | Accessibility | Site Map | Feedback".

Symposium on Renewable Energy  
& Eastern Oregon Landscape Conservation  
November 9, 2010  
Riverhouse Conference Center, Bend Oregon



# BLM “Wind Energy Development Challenges and Opportunities” Mapping Effort

- **Secretary Vision: Collaboration across agencies, departments, states and local communities to support timely and responsible renewable energy development while protecting and enhancing our natural resources.**



**Symposium on Renewable Energy  
& Eastern Oregon Landscape Conservation  
November 9, 2010  
Riverhouse Conference Center, Bend Oregon**



# BLM “Wind Energy Development Challenges and Opportunities” Mapping Effort

- All potential renewable energy projects that occur on BLM lands will be evaluated individually, and subject to the appropriate level NEPA review



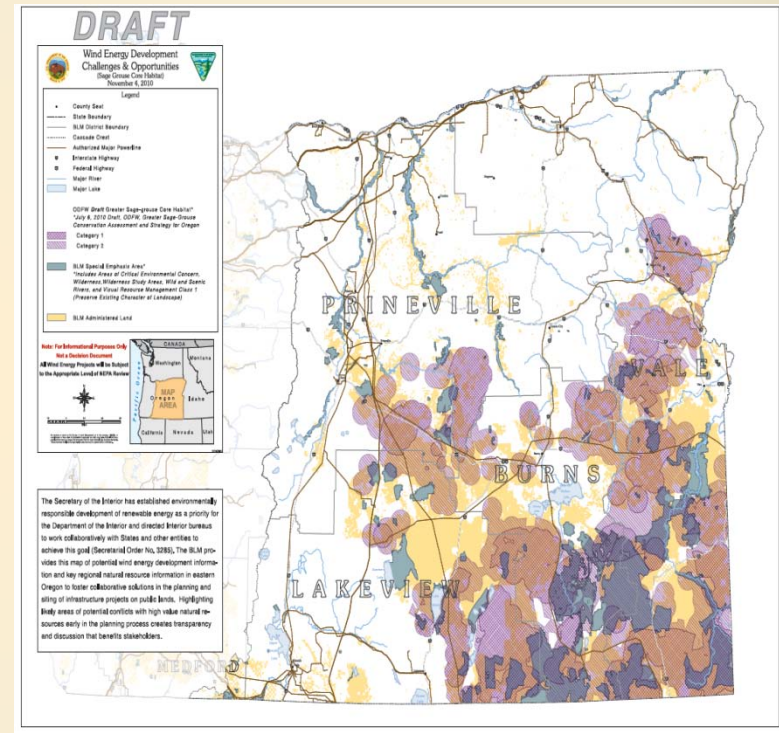
Symposium on Renewable Energy  
& Eastern Oregon Landscape Conservation  
November 9, 2010  
Riverhouse Conference Center, Bend Oregon





# BLM “Wind Energy Development Challenges and Opportunities” Mapping Effort

- The map is a tool that was designed to help stakeholders.
- The map and the accompanying layers will always be changing as new data and information become available.
- These maps will be frequently updated with new information.



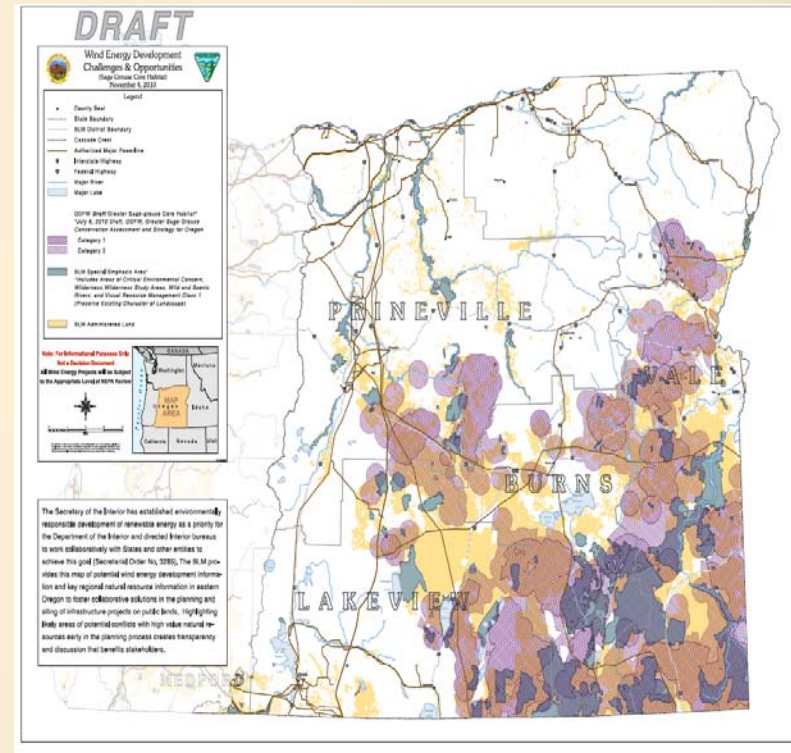
Symposium on Renewable Energy  
& Eastern Oregon Landscape Conservation  
November 9, 2010  
Riverhouse Conference Center, Bend Oregon



# BLM “Wind Energy Development Challenges and Opportunities” Mapping Effort

The draft ODFW Sage-grouse Core Habitat layer:

- Why is BLM using it?
- The methodology used is the same as the BLM is using nationally.
- The National Sage-Grouse Strategy.



Symposium on Renewable Energy  
& Eastern Oregon Landscape Conservation  
November 9, 2010  
Riverhouse Conference Center, Bend Oregon

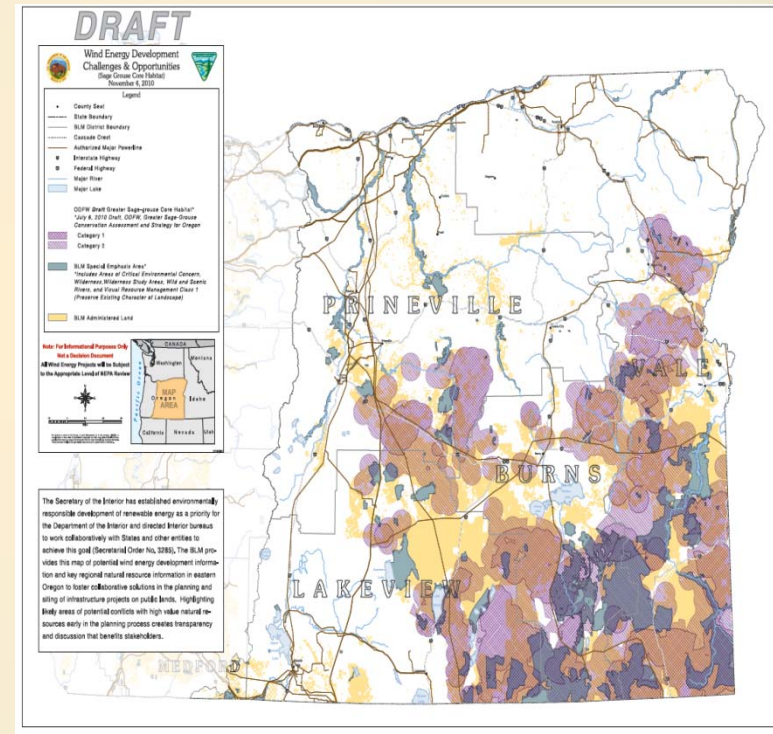




# BLM “Wind Energy Development Challenges and Opportunities” Mapping Effort

The draft ODFW Sage-grouse Core Habitat layer:

- Each potential project that occurs in ODFW draft sage-grouse Core Habitat on BLM lands will be evaluated individually and subject to NEPA review.
- How does ODFW recommended mitigation differ from the Core Habitat layer?



Symposium on Renewable Energy  
& Eastern Oregon Landscape Conservation  
November 9, 2010  
Riverhouse Conference Center, Bend Oregon



# BLM “Wind Energy Development Challenges and Opportunities” Mapping Effort



**Symposium on Renewable Energy  
& Eastern Oregon Landscape Conservation  
November 9, 2010  
Riverhouse Conference Center, Bend Oregon**



# BLM “Wind Energy Development Challenges and Opportunities” Mapping Effort

## QUESTIONS?

<http://www.blm.gov/or/energy/opportunity/index.php>

**Symposium on Renewable Energy  
& Eastern Oregon Landscape Conservation  
November 9, 2010  
Riverhouse Conference Center, Bend Oregon**

