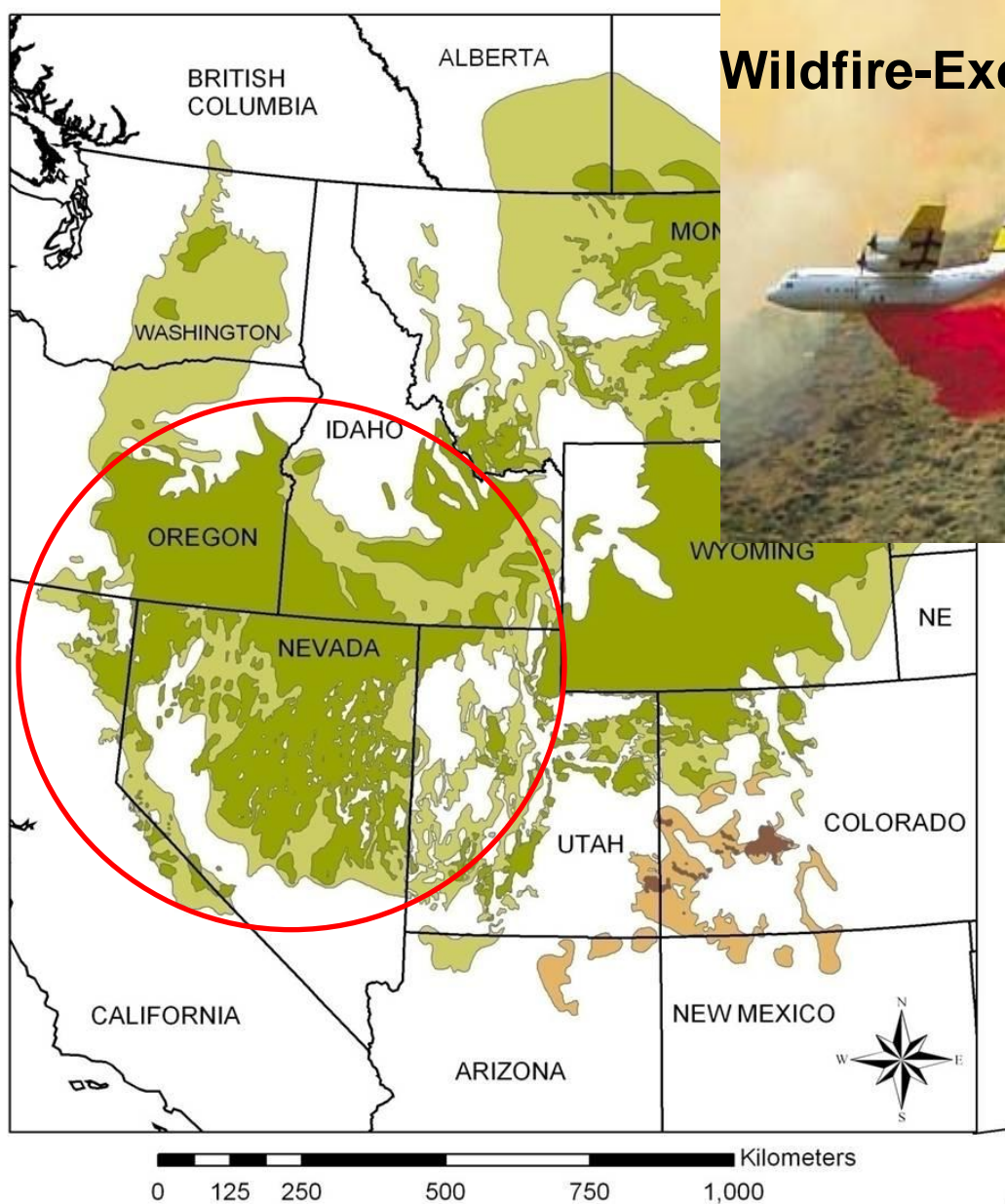




A Strategic Approach to Tackling Conifer Encroachment and Quantifying Outcomes for Sage-Grouse



Key Threats in Great Basin



Wildfire-Exotic Annual Grass Cycle



Conifer Encroachment



Scale of Conifer Encroachment

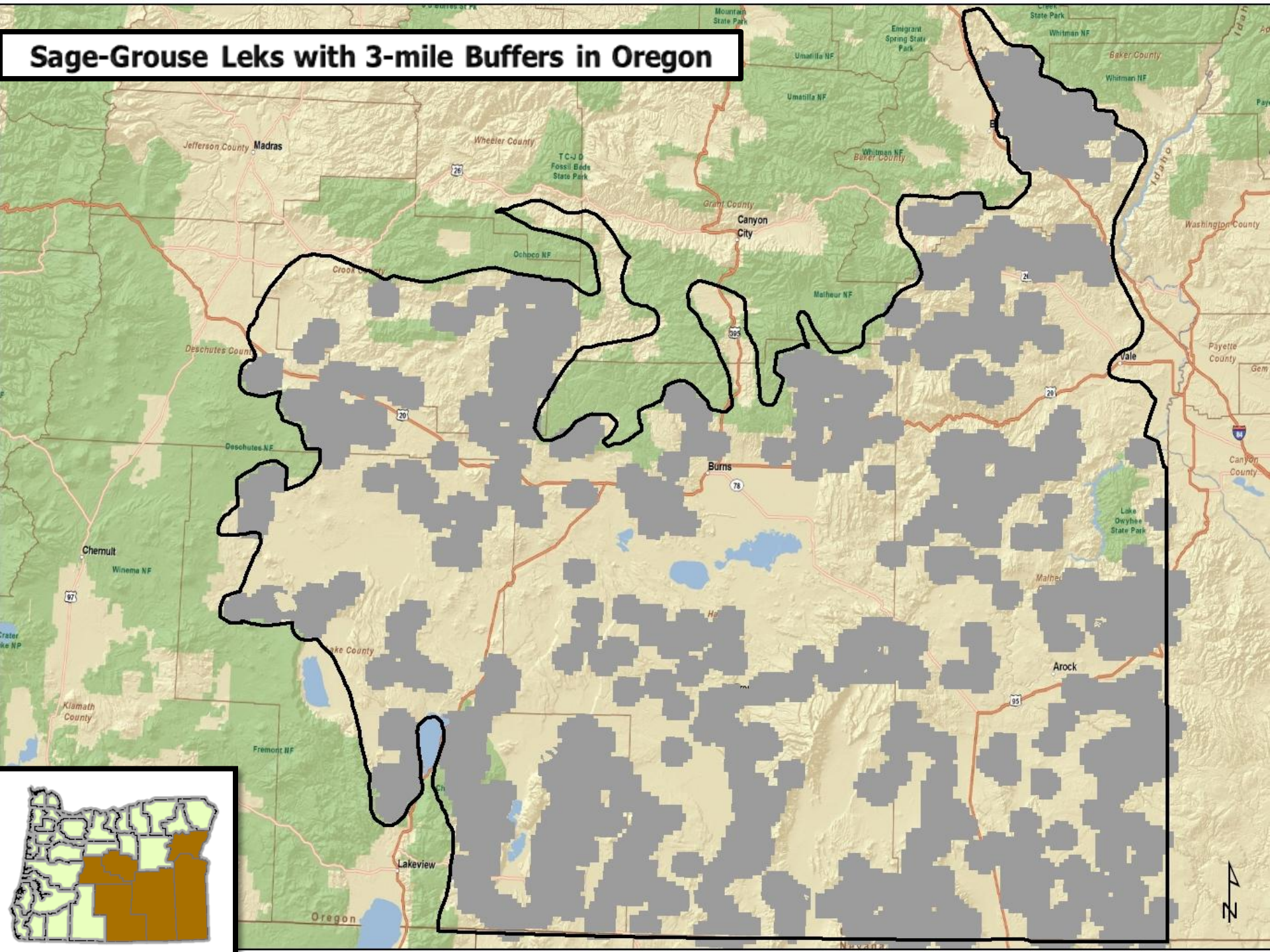
In the Great Basin:

- 12 mill acres of expansion since 1860
- 90% was historically sagebrush steppe
(Miller et al. 2011)
- 6 million acres of juniper in Oregon

So....where do we start?



Sage-Grouse Leks with 3-mile Buffers in Oregon



Phases of Woodland Succession

Phase I (early)



Phase II (mid)



Phase III (late)



36 years of Woodland Succession



1969



2005

Maximizing Biological Return-on-Investment

Phase I (early)



~800,000 acres Phase I & II
juniper within 3 miles of leks in
Oregon

Phase II (mid)

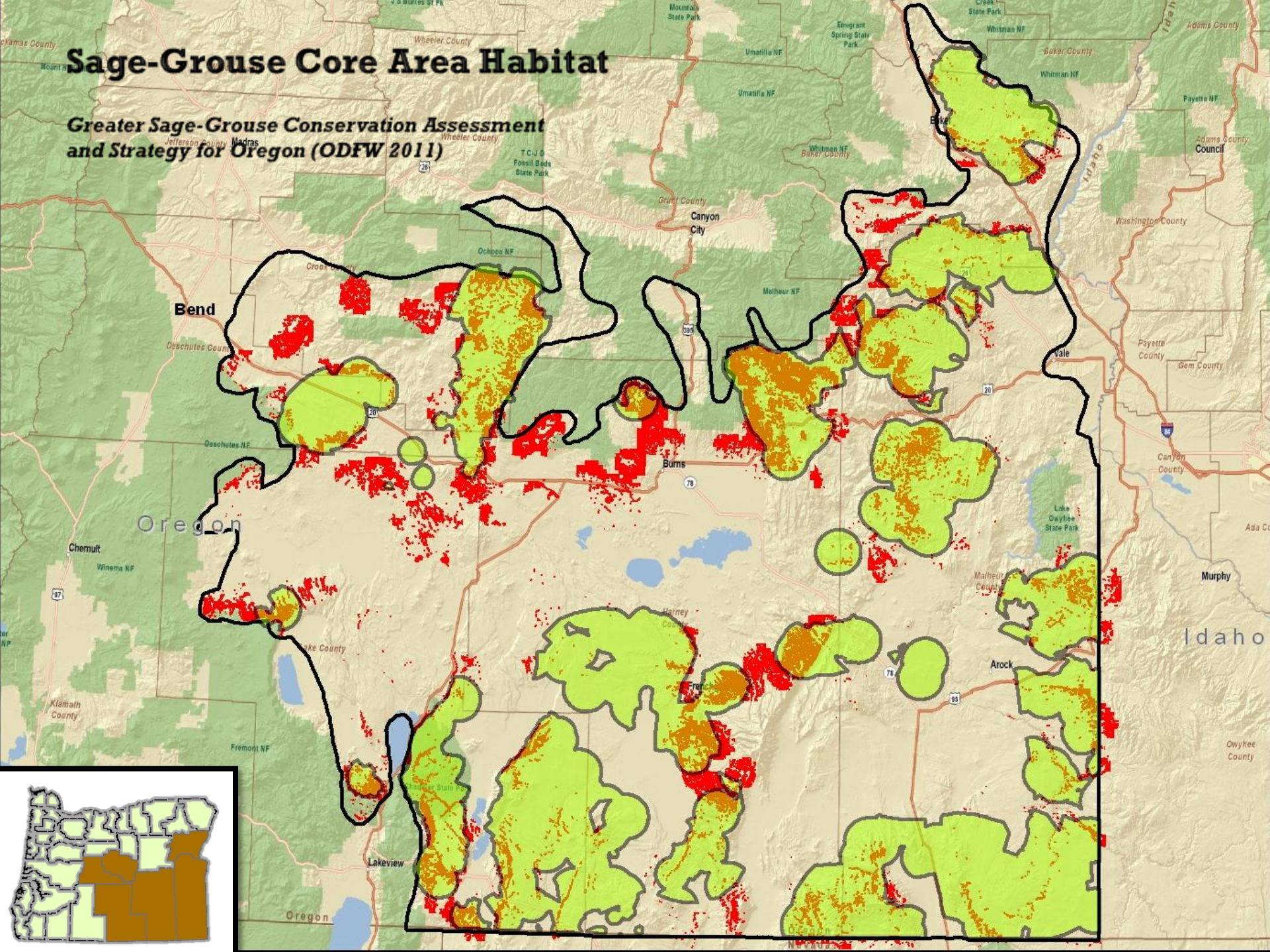


Phase III (late)



Sage-Grouse Core Area Habitat

Greater Sage-Grouse Conservation Assessment
and Strategy for Oregon (ODFW 2011)



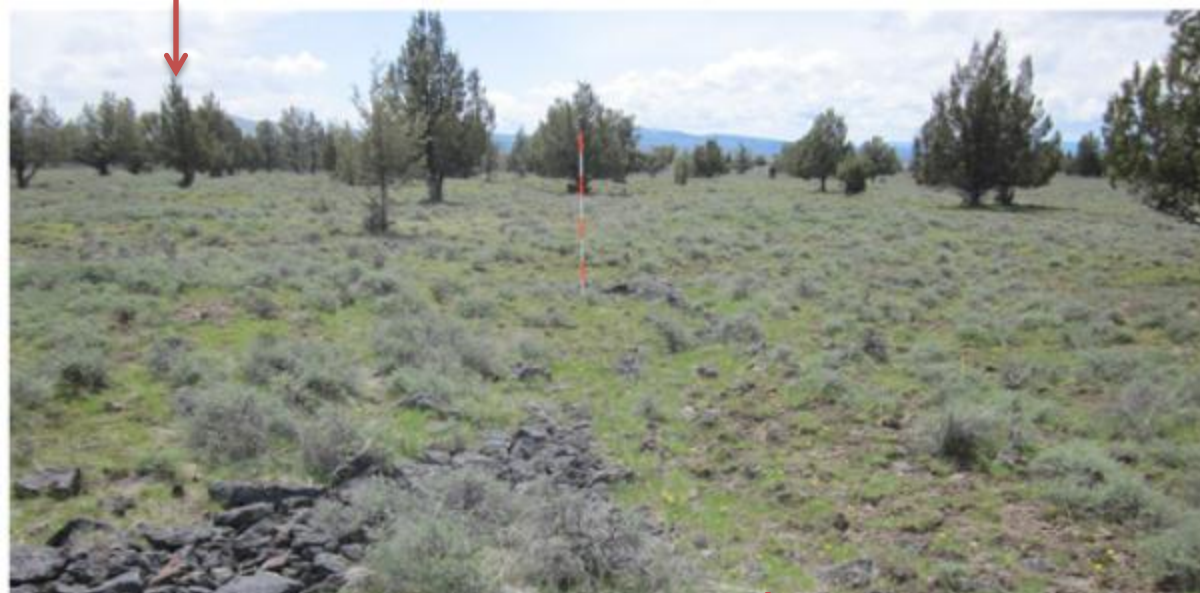
Oregon SGI Implementation

2010-2012

- **Farm Bill Programs: EQIP & WHIP**
- **\$10 million**
- **95,000 acres being treated**
- **47% already completed**







111CP
CIN:3
AZ:220°
5/12/11
SG1005

Before (May 2011)



111CP
CIN:3
AZ:220°
5/11/2012
SG1005

After (May 2012)



Before (July 2011)

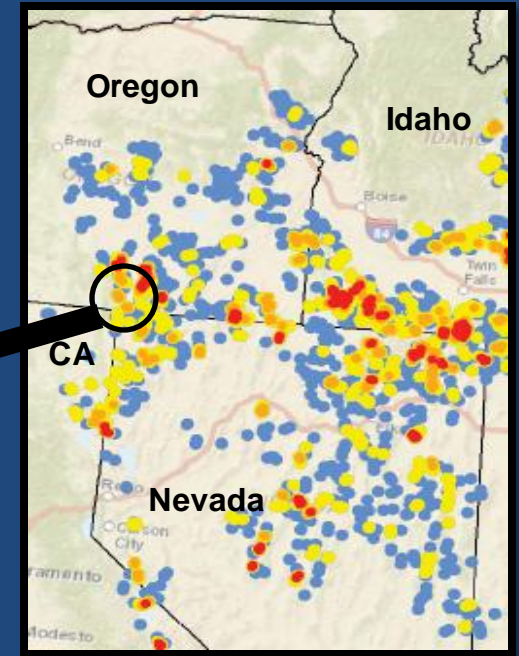
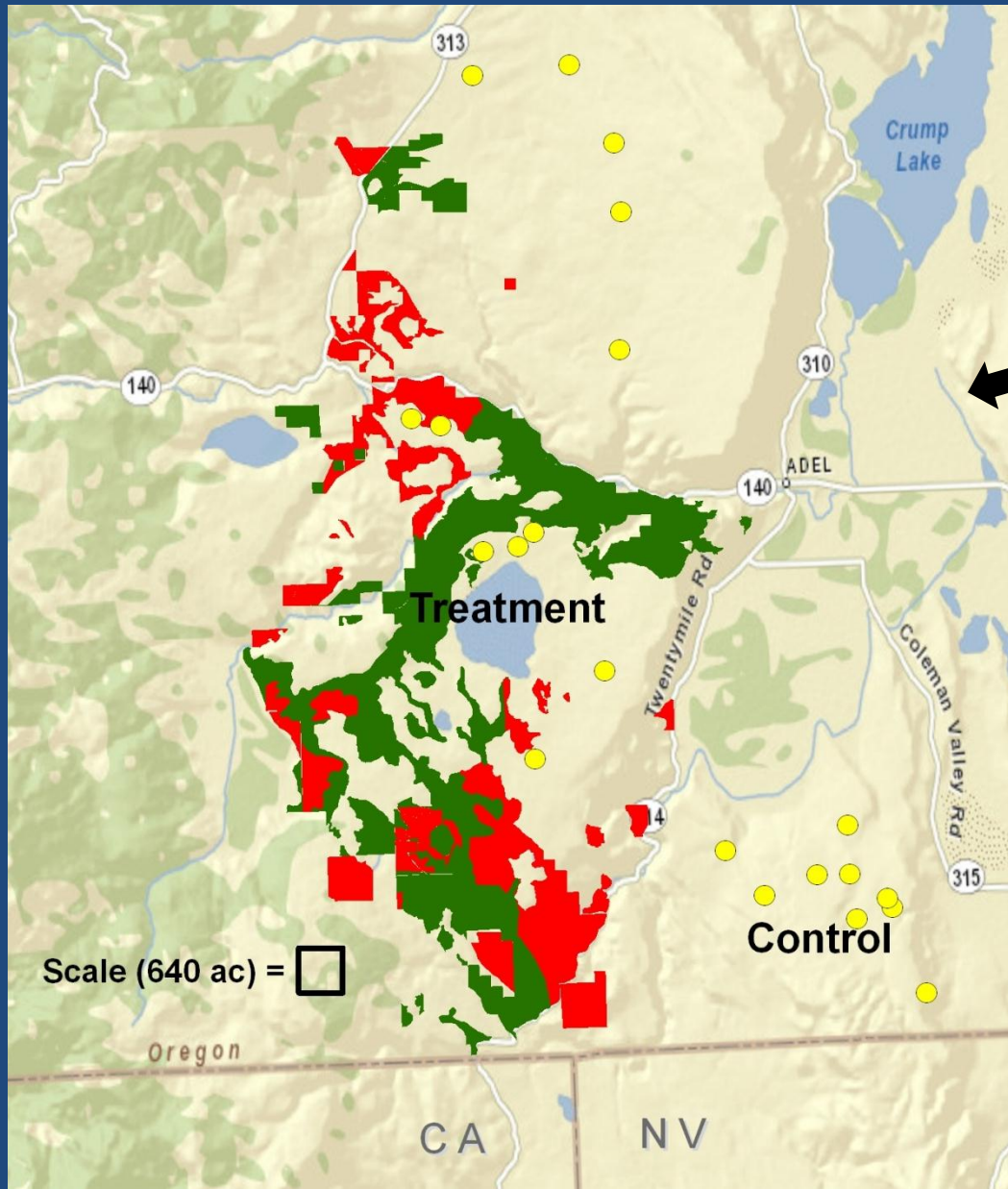


After (March 2012)

03/21/2012



South Warner Juniper Removal Study (2010-2014)



Partners: BLM, NRCS, ODFW, Univ. of ID, Univ. of MT, & ranchers

Questions?



Follow the Partnership at: sagegrouseinitiative.com