

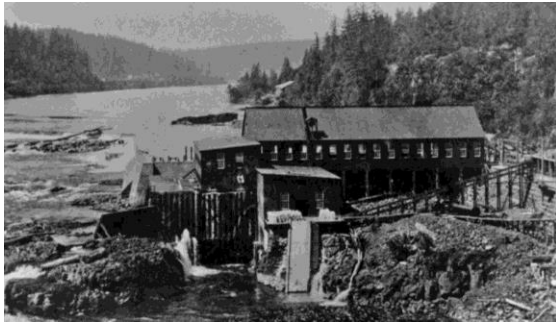


# West Linn Paper Company



## Mill Overview

# Mill Timeline



**1845**

Linn City was  
founded

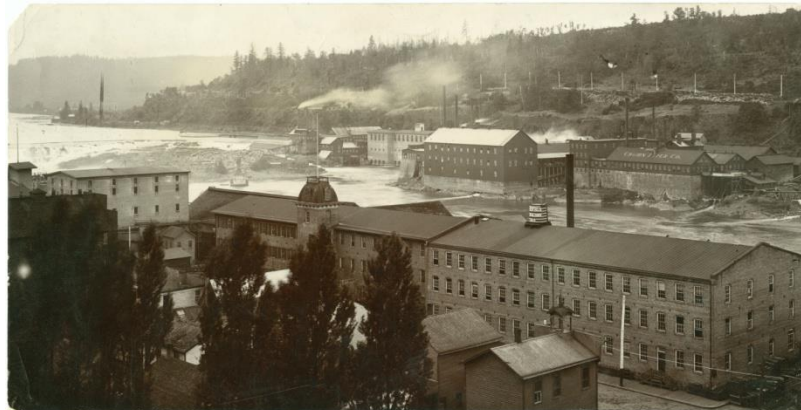
**1859**

Oregon becomes a  
state



**1889**

First mill site built



**1922**

Arch Bridge  
Constructed

# Mill Timeline

**1986**

Mill Acquired by  
James River

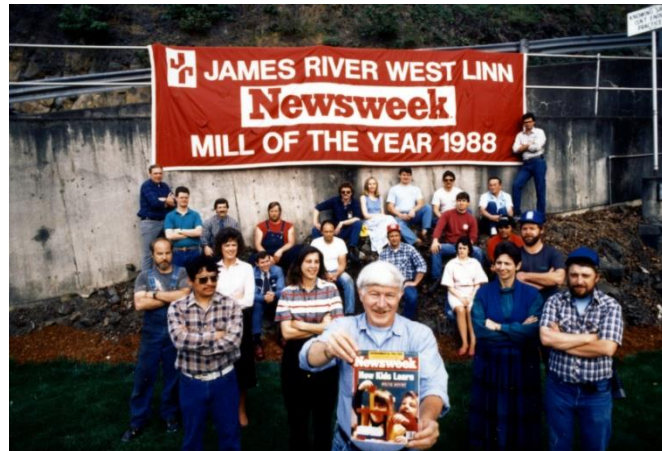
**1990**

Mill Purchased by  
Simpson



**1947**

Mill begins producing  
coated paper



**1997**

Mill reopens as  
West Linn Paper

# West Linn Paper Impact

- ▶ 125 Years in West Linn
- ▶ We employ ~250 employees in family wage jobs at wages that are above the Clackamas County average. Our annual payroll is \$18–20M and makes a significant economic impact in the community
- ▶ We also operate a distribution facility in Vancouver, WA which directly or indirectly employs 40 employees with a \$2M payroll
- ▶ According to the State Economic Development each job we have creates three more jobs in the tri-county metropolitan area



# West Linn Equipment & Capabilities

- ▶ Three paper machines
- ▶ Finished machine trim: 134" – 140"
- ▶ Capacity: 260,000 tons
- ▶ \$250 Million in sales



# West Linn Customers

- ▶ Coated Freesheet Paper – High quality paper used for magazines, catalogs and high-end advertising brochures
  - ▶ Princess Cruises
  - ▶ Pier 1
  - ▶ Crate & Barrel
  - ▶ Chrysler
- ▶ Key supplier to Western printers
  - ▶ WLPC supplies 90+% of the market for this type of paper within Oregon and about 43% within California



# West Linn Goals



- ▶ Safety
- ▶ Long-term financial performance
- ▶ Increased productivity
- ▶ Environmental sustainability
- ▶ Quality, value, and service
- ▶ Building & nurturing long-lasting relationships with our customers

# Recent WLPC Capital Investment Projects

- ▶ Coater improvements – new coater for improved coating quality on heavy weight grades
- ▶ Wet end additive dilution system – saves heat, energy, water and chemicals
- ▶ 12 new clean diesel tractors – improved fuel use and reduced emissions
- ▶ **Proposed for 2016 – nearly \$5 MM in improvements**





# West Linn's Commitment to Sustainability



- ▶ Offer Nature and Nature Plus lines, with 10% – 30% Post Consumer Waste
  - ▶ FSC–certification for our entire Nature line of products and FSC or SFI options for Sonoma and Capistrano products
  - ▶ Consistently exceeding regulatory requirements
  - ▶ Setting, measuring, and reaching sustainability goals

# The Locks Now



- ▶ The mill stopped all barge activity in 1996 – it is no longer used for transportation of products & materials
- ▶ Main issues include safety & restricted access to the island
- ▶ Potential bottleneck for growth without a long term solution for access